

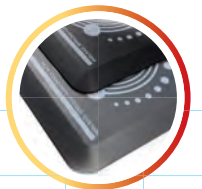
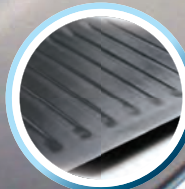
AFS-1EXTM

ANTI-FATIGUE SYSTEM

A totally new and unique Anti-Fatigue range that provides the ultimate combination of standing comfort & body support.



SIT TO STAND



ERGONOMIC PERFORMANCE

MAXIMUM HEALTH SUPPORT

ANTI-MICROBIAL PROTECTION

INTRODUCING THE AFS-TEXTM ANTI-FATIGUE SYSTEM

A totally new and unique Anti-Fatigue range designed to provide the ultimate combination of standing comfort & ergonomic body support.



Very soft mats provide great comfort for very short periods but may ultimately increase fatigue and the risk of injury due to surface instability that causes body sway.

Mats that are too hard or “bottom-out” through normal body weight are little better than standing on conventional flooring.

AFS-TEX mats are designed to relieve the strain of prolonged standing by providing the prime mix of mat compression and body support through optimal material firmness.

The cushioned yet supportive standing surface reduces the strain on feet, legs knees & back joints that can be caused through prolonged standing.

AFS-TEX mats are specially designed to include features that will encourage movement of the legs and feet which in turn will stimulate blood flow and increase the body's metabolism.

AFS-TEX mats contain an active anti-microbial ingredient to protect the product from microbial deterioration. This built-in active ingredient will not wash off or wear away and so is effective 24/7 for the life of the product.

The unique polyurethane construction of AFS-TEX mats is guaranteed not to lose body support over time.

Environmentally friendly and phthalate free combined with a 10 Year Limited Warranty, AFS-TEX mats tick all the right boxes for peace of mind.



ERGONOMIC PERFORMANCE

MAXIMUM HEALTH PERFORMANCE

ANTI-MICROBIAL PROTECTION

AFS-TEXTM SYSTEM 2000

Unique AFS-TEX Anti-Fatigue formulation combines standing comfort and body support. Some users report that they were able to stand in comfort for up to 40% longer when using an AFS-TEX 2000 mat.

- High gauge 18mm / 0.7” polyurethane construction.
- The cushioned yet supportive standing surface reduces the strain on feet, legs, knees & back joints that can be caused through prolonged standing.
- Designed to increase comfort levels during prolonged standing while working in the home or office.
- Ergonomically designed print style to encourage regular foot movement and changes in standing position.
- Regular movement of the legs and feet helps to stimulate blood flow and increase the body's metabolism; use of AFS-TEX 2000 anti-fatigue mats encourages such movement.
- Contains an active anti-microbial ingredient to protect the product from microbial deterioration. The built-in active ingredient will not wash off or wear away and so is effective 24 / 7 for the life of the product.
- Anti-slip base for maximum stability in use with ADA trip hazard compliant bevelled edging.
- Environmentally friendly and phthalate free.
- 10 Year Limited Warranty for peace-of-mind.



CONTAINS AN ANTI-MICROBIAL INGREDIENT TO PROTECT THE PRODUCT FROM MICROBIAL DETERIORATION.



Use when wearing raised heeled footwear will reduce the mats effectiveness and is likely to puncture the mat surface. Damage caused by use while wearing high heels is not covered by the product warranty.

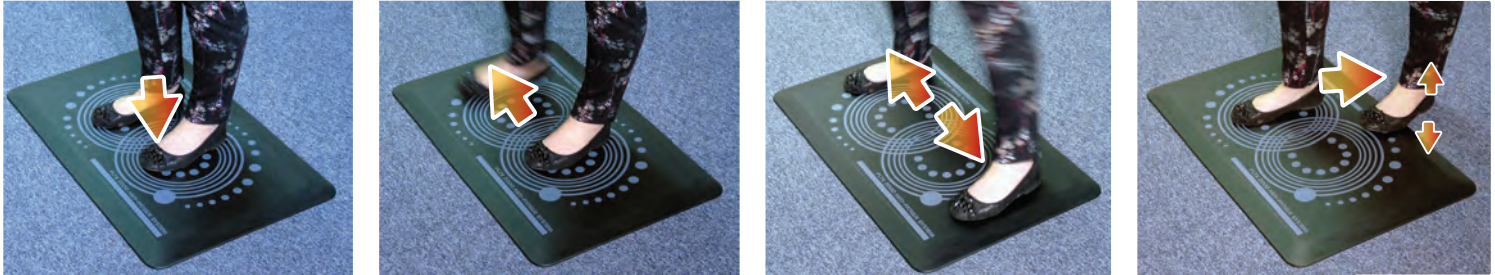
The ergonomically designed print on the surface of the **AFS-TEX 2000** is designed to encourage continual foot movement (this significantly enhances fatigue relief) by acting as a mental trigger to remind you to keep moving.

Using the print design as a guide, regularly reposition your stance to stimulate blood flow in the feet and lower legs, this increases your metabolism and provides maximum fatigue relief.

For example, as a starting point, stand with one foot within each circle and then alternately move each foot to the edge of the print design and back again.

These simple movements ensure weight distribution and pressure on the feet and ankles is constantly adjusting.

Make up your own moves using the print as a stimulus!



For maximum effect ensure use of the full central area of the mat and also utilize the bevelled edging to stretch ankle and lower leg muscles for added relief.

AFS-TEX™ SYSTEM 3000

Unique AFS-TEX Anti-Fatigue formulation combines standing comfort and body support. Some users report that they were able to stand in comfort for up to 50% longer when using an AFS-TEX 3000 mat.

- AFS-TEX System 3000 anti-fatigue mat designed to increase comfort levels during prolonged standing while working in the home or office.
- Solid, one-piece extra depth 0.8" polyurethane construction guaranteed not to lose body support over time.
- The cushioned yet supportive standing surface reduces the strain on feet, legs, knees & back joints that can be caused through prolonged standing.
- Extra depth polyurethane construction with a fine anti-microbial polyester covering for added tactile comfort. Ideal for users who like to work without foot wear.
- Regular movement of the legs and feet helps to stimulate blood flow and increase the body's metabolism; use of AFS-TEX 3000 anti-fatigue mats encourages such movement.
- Contains an active anti-microbial ingredient in the body and fine polyester cover to protect the product from microbial deterioration. The built-in active ingredient will not wash off or wear away and so is effective 24/7 for the life of the product.
- Anti-slip base for maximum stability in use with ADA trip hazard compliant bevelled edging.

PREMIUM GAUGE 20mm/0.8in SPECIALLY FORMULATED POLYURETHANE CONSTRUCTION WITH FINE POLYESTER GRADED TACTILE SURFACE FOR EXTRA COMFORT.



EXTENDED MAT WIDTH with 20° ADA COMPLIANT EDGE FOR MAXIMUM SAFETY IN THE HOME OR OFFICE.
CONTOURED CURL-PROOF EDGING ENSURING CONSISTENT FLATNESS.



ANTI-SLIP BASE with 'EASY SLIDE' PROFILE FOR REPOSITIONING.



CONTAINS AN ANTI-MICROBIAL INGREDIENT TO PROTECT THE PRODUCT FROM MICROBIAL DETERIORATION.

LIKE ALL AFS-TEX MATS, THE SYSTEM 3000 IS DESIGNED TO ENCOURAGE THE FOOT AND LEG MOVEMENTS THAT STIMULATE BLOOD FLOW AND INCREASE METABOLIC RATES.

ALTHOUGH NOT AS OBVIOUS AS THE SYSTEM 2000's VISUAL TRIGGERS, THE SYSTEM 3000 HAS OPTIMUMplus THICKNESS, A TACTILE SURFACE AND BEVELLED EDGES THAT SUBTLY ENCOURAGE MOVEMENT FROM THE USER.

PHTHALATE FREE.

10 YEAR LIMITED WARRANTY.



Use when wearing raised heeled footwear will reduce the mats effectiveness and is likely to puncture the mat surface.
Damage caused by use while wearing high heels is not covered by the product warranty.

AFS-TEX™
a floortex brand



AFS-TEX™ SYSTEM 5000



Regular movement of the legs and feet helps to stimulate blood flow and increase the body's metabolism; use of AFS-TEX 5000 mats actively encourages such movement.

Some users report that they were able to stand in comfort for over 50% longer when using an AFS-TEX 5000 mat.

The Ultimate Ergonomic Solution for Comfort & Productivity at your Standing Desk.

- AFS-TEX System 5000 anti-fatigue mat ergonomically designed for use with standing desks.
- Designed specifically to notably relieve strain caused by prolonged standing while working in the home or office.
- Contoured non-linear profile of between 0.8" and 2". Facilitates numerous standing positions which significantly reduces fatigue compared to standing in a single position.
- The cushioned yet supportive standing surface reduces the strain on feet, legs, knees & back joints that can be caused through prolonged standing.
- Raised ergonomic surround feature allows further rocking or stretching of feet and ankles. Such activity can help to stimulate blood flow and increase the body's metabolism which can reduce fatigue.
- Contains an active anti-microbial ingredient to protect the product from microbial deterioration. The built-in active ingredient will not wash off or wear away and so is effective 24 / 7 for the life of the product.
- Solid, one-piece extra depth (up to 2") polyurethane construction will not lose body support over time.
- Anti-slip base for maximum stability in use.
- 0.8" - 2" Polyurethane.
- Phthalate free.
- 10 Year Limited Warranty.



Use when wearing raised heeled footwear will reduce the mats effectiveness and is likely to puncture the mat surface. Damage caused by use while wearing high heels is not covered by the product warranty.



AFS-TEX™ SYSTEM 5000 S2S

The Ultimate Ergonomic Solution for Sit & Stand Working.

Use the AFS-TEX System 5000 in combination with our custom designed **Ultimat® Polycarbonate Chair Mat** for the ultimate sit & stand ergonomic solution.

Designed specifically to work in combination with the AFS-TEX 5000 Anti-Fatigue Mat, the **Ultimat®** is manufactured using our *Original Floortex Polycarbonate* formulation - making it virtually indestructible under normal usage and at the same time providing a superior *easy-glide* surface for chair castor movement.

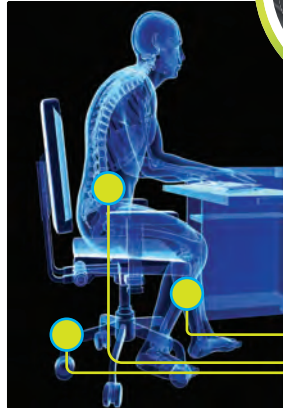
Available with grippers for carpets or smooth backed for hard floors, the clear *easy-glide* top surface significantly reduces the effort required to move about while seated.

This in turn reduces the stress and strain placed on the users back and lower legs - making it the ultimate ergonomically sound chair mat.

The contoured shape and size is designed to provide the perfect 'runway' for the AFS-TEX 5000 mat.

AFS-TEX System 5000 underside ribbing is designed to be stable on standard hard floors or carpets but to have controllable slide when used with the **Sit & Stand Ultimat®**.

Use the ergonomic easy glide **Ultimat®** chair mat when seated, then pull the **System 5000** mat from under the desk when moving to a stand-up working position.



The **Ultimat** easy-glide top surface significantly reduces the effort required to move about while seated - reducing the stress and strain placed on the users back and lower legs.

Available in Hard Floor and Carpet options.



The AFS-TEX SYSTEM 5000 S2S is the best combination of Ergonomic & Anti-fatigue Technology aligned with design expertise.

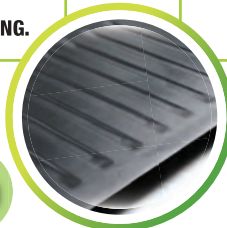
This makes it far superior to any single product options that try to inadequately address the Sit-to-Stand question.

The ultimate performance chair mat and the ultimate performance stand up mat - the ultimate solution for Sit-to-Stand working!

SIT TO STAND

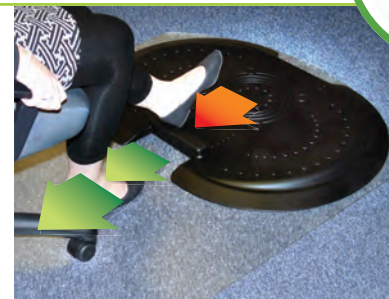


USE THE LATERAL PULL / PUSH POINT 'ERGO-BAR' TO MOVE THE 5000 AWAY FROM THE SEATING AREA WHEN SITTING.



ANTI-SLIP BASE with 'EASY SLIDE' PROFILE FOR REPOSITIONING.

WHEN RETURNING TO A STANDING POSITION, USE THE 'ERGO-BAR' TO BRING THE 5000 BACK INTO THE CORRECT POSITION FOR STANDING.



THE SPECIFICALLY DESIGNED SYSTEM 5000 S2S ULTIMAT WORKS IN ERGONOMIC HARMONY WITH THE SYSTEM 5000 ANTI-FATIGUE MAT AND IS AVAILABLE IN BOTH HARD FLOOR AND CARPET CONFIGURATIONS.

Care should be taken to position your AFS-TEX 5000 Mat under the desk when not in use - to eliminate the possibility of tripping to passing traffic. Use when wearing raised heeled footwear will reduce the mats effectiveness and is likely to puncture the mat surface. Damage caused by use while wearing high heels is not covered by the product warranty.



ERGONOMIC PERFORMANCE

MAXIMUM HEALTH SUPPORT

ANTI-MICROBIAL PROTECTION

The ultimate Sit & Stand Solution



AFS-TEXTM

ANTI-FATIGUE SYSTEM
a floortex brand



THE QUEEN'S AWARDS
FOR ENTERPRISE:
INTERNATIONAL TRADE
2015

For Full Range Details,
Research Information
&
'How to Use'
visit:
www.floortex.com/AFS



Corporate Head Office – European & Global
Tewkesbury, United Kingdom
Tel: +44 (0) 1684 853 030
Fax: +44 (0)1684 273 731

info@floortex.com
www.floortex.com

FLOORTEX[®]
s o l u t i o n s
the experts in surface
protection



USA Head Office
813 Park Avenue, Murfreesboro
TN 37129, USA
Tel: +1 615 - 225 - 9800
Fax: +1 615 - 225 - 9801

SalesSupport@FloortexLLC.com
www.floortex.com

ERGONOMIC PERFORMANCE

MAXIMUM HEALTH SUPPORT

ANTI-MICROBIAL PROTECTION