

Comfort Flow™ Mats

Anti-Fatigue Mats • Wet Area • Indoor

Comfort Flow is a flow-through mat with excellent anti-fatigue properties designed for wet areas where grease, oil, and chemicals may be present.



- **Clean** – Drainage holes allow liquid to flow through; lifetime anti-microbial treatment prevents odors and degradation of the mat
- **Safe** – Beveled edges provide a safe transition from floor to mat; certified high-traction by the National Floor Safety Institute (NFSI)
- **Comfortable** – High-density closed-cell nitrile rubber cushion provides excellent anti-fatigue qualities
- **Versatile** – Grease and oil proof; chemical resistant; welding safe
- **Easy to Clean** – Lightweight flexible design ensures easy handling and cleaning
- Commercially launderable

Modular tiles are available for custom configurations, and linkable mats are available for longer runs (see Comfort Flow HD Tiles & Comfort Flow HD Linkable Mats)



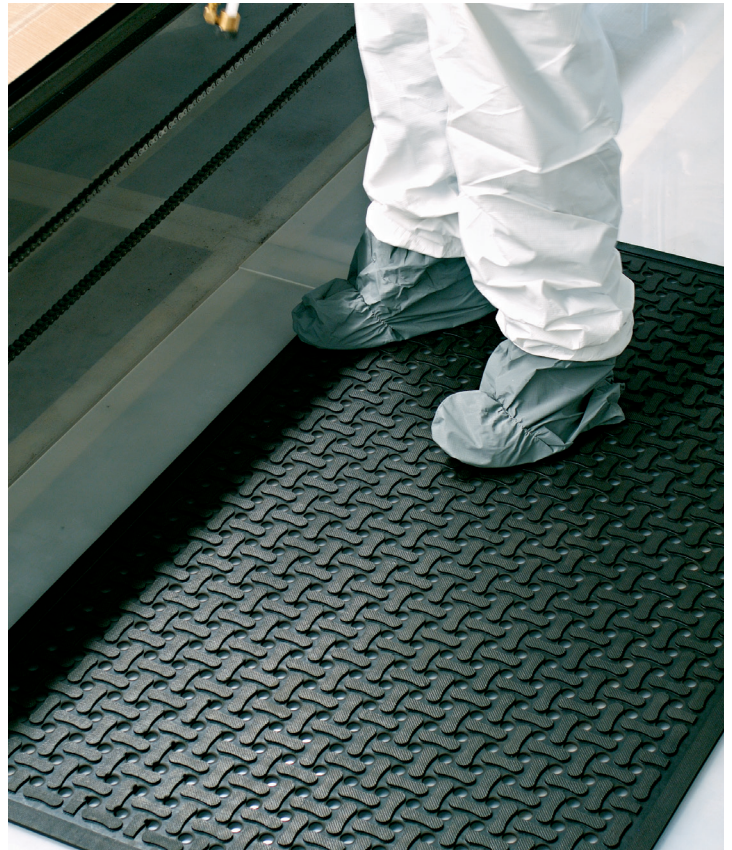
Flexible Design

Unlike traditional kitchen mats which are typically heavy and difficult to move for cleaning, Comfort Flow mats have a flexible design that makes them easy to roll and handle. They can be cleaned in a variety of ways: scrubbed with a deck brush or cleaned with a pressure washer, rolled and washed in a commercial dishwasher*, and they can withstand commercial laundering and sterilization in an autoclave.

*Please consult your local health code for restrictions or limitations before washing your mats in the dishwasher.

Comfort Flow™ Mats

Anti-Fatigue Mats • Wet Area • Indoor



Product No. 420

| Size (ft.) | Size (in.) | Shipping Weight |
|------------|------------|-----------------|
| 2' x 3' | 23" x 34" | 6 lbs. |
| 3' x 5' | 34" x 56" | 14 lbs. |
| 3' x 9' | 34" x 109" | 25 lbs. |
| 4' x 6' | 42" x 68" | 20 lbs. |

Note: Mat sizes are approximate as rubber shrinks and expands in conjunction with temperature and time. Tolerable manufacturing size variance is 3-5%.



M + A MATTING

800.665.5336

www.mamattng.ca