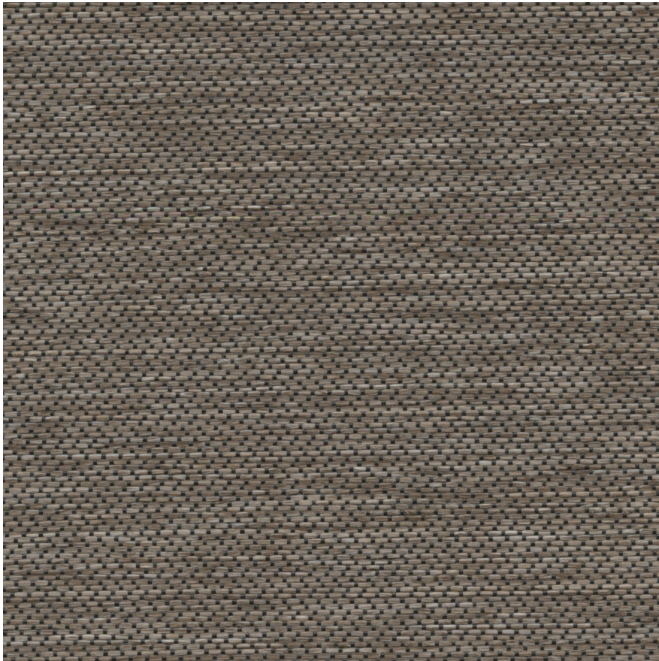




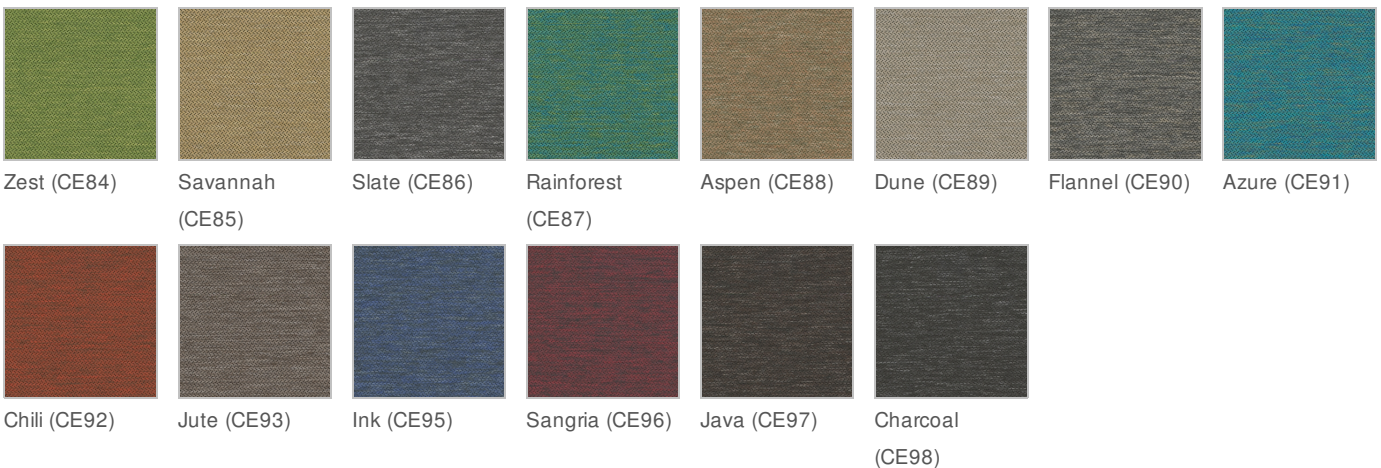
Carrera Jute (CE93)



Grade:	Grade 1
Content:	100% Virgin Polyester
Width:	54"
Weight:	13 oz/lin.yd.
Cleaning:	WS (Water and Solvents)
Abrasion:	ASTM D-4157 (Warp: exceeds 300,000 double rubs) / #10 Duck-Wyzenbeek Method
Flammability:	NFPA 260 / UFAC Class 1 / BIFMA Class A / CAL TB117-2013
Light Fastness:	AATCC-16A (Class 4.5)
Pilling:	ASTM D-3511 (Class 4.5)
Breaking Strength:	ASTM D-5034 (Warp: 129 lbs; Fill: 331 lbs)
Seam Slippage:	ASTM D-4034 (Warp: 65.9 lbs; Fill: 67.1 lbs)

* Pattern may not be to scale. Please calibrate your display to improve color accuracy and order samples prior to making a purchase.

Available Colors:



Global Carded Textiles >

© 2020 Global Furniture Group