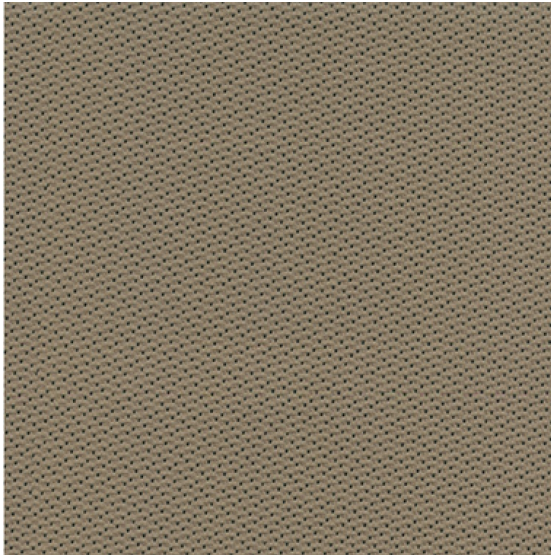


# Offices to Go

## Terrace Haze (TC67)



<b>Content:</b>	70% Virgin Polyester / 30% Post-Consumer Recycled Polyester
<b>Cleaning:</b>	WS (Water and Solvents)
<b>Abrasion:</b>	ASTM D-4157 (Warp: exceeds 150,000 double rubs) / #10 Cotton Duck-Wyzenbeek (Fill: exceeds 150,000 double rubs)
<b>Light Fastness:</b>	AATCC-16A (Class 5)
<b>Pilling:</b>	ASTM D-3511 (Class 4)
<b>Breaking Strength:</b>	ASTM D-5034 (Warp: 279 lbs; Fill: 211 lbs)
<b>Seam Slippage:</b>	ASTM D-4034 (Warp: 140.6 lbs / Fill: 68.6 lbs)
<b>PWidth:</b>	57"