

# ACCESSORIES

## Keyboard Trays



**100-KD28**  
**Keyboard Drawer**  
Extra width for mouse  
Available Finish: all standard  
Heartwood laminate finishes



**100-KB2**  
**Articulating Keyboard Tray**  
Track mount hide-away design - 12.75" slide  
Height adjustment (6.75")  
Swivel range: -20° to 20°  
Heavy-duty steel construction provides extra strength & durability  
Available Finish: Black (BL)



**100-COBRA**  
**Spring-Assisted Adjustable Keyboard Tray**  
Easy to use lever handle adjustment  
Ergonomic design including wrist rest  
Weight capacity: 2kg / 4.4 lbs  
Tray tilt function 13° to 15°  
Swivel range -180° to 180°  
Mounting plate depth - 24.8"  
Available Finish: Black (BL)



**100-PD**  
**Pencil Drawer**  
Moulded plastic pencil drawer  
Available Finish: Black (BL)



**100-AKTM-2**  
**Articulating Keyboard Tray**  
Large 26" w x 9.7" d tray  
Holds up to 2.2 lbs  
Height adjustment - 0 to 4 1/4"  
Tilting adjustment - 16° / +20°  
Telescoping tray slides completely under the work surface  
Requires 13 1/2" of depth clearance under the work surface  
Optional brackets to lower the mechanism and clear obstructions under the work surface. Clears 2 1/4"  
Vinyl wrapped MDF construction with wrist rest  
**Not** compatible with 24" Apollo  
Available Finish: Black (BL)

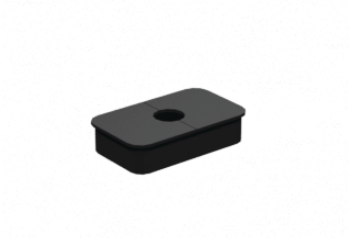


**100-DRAWER**  
**Metal Storage Drawer**  
Undermount, space-saving storage drawer ideal for sit-to-stand applications  
Solid steel construction w/ slim, flush mount design  
Smooth glide drawer mechanism - drawer track travel 170mm (6.7")  
Weight capacity: 5kg / 11 lbs  
Compatible with calypso height adjustable desking 30" deep or greater  
Available Finish: Black (BL)



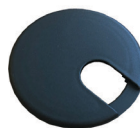
**100-2219PD**  
**100-2919PD**  
**Laminite Drawer**  
Matching 2mm edge band  
Available Finish: all standard  
Heartwood laminate finishes

## Grommet



**100-GR**  
**2 x 3" Grommet**  
Factory installed

**100-G19**  
Available in Bulk  
  
Available Finish: Black (BL)  
or Grey (GR)



**100-GR3**  
**3" Round Grommet**  
Site install required  
Available Finish: Black (BL)

# ACCESSORIES

## Power Options



**100-FTP-DATA**  
**Flush Flip Top Power Grommet**  
3 power, 2 Ethernet (RJ45) ports  
Includes 10' power cord, UL certified  
Streamline profile with hidden receptacles when in flipped position  
Site install required  
Available Finish: Black (BL)



**100-FTP-USB**  
**Flush Flip Top Power Grommet**  
3 power, 2 USB ports, can be used as data transfer or charging @ 2.1 amps, 1 Ethernet (RJ45) port  
Includes 10' power cord, UL certified  
Streamline profile with hidden receptacles when in flipped position  
Site install required  
Available Finish: Black (BL)



**100-GRP-USB**  
**Power Grommet with USB**  
5' cord, UL certified  
1 USB - charging @ 2.1 amps or data transfer  
1 power  
2.36" / 60mm hole size  
List price includes custom cutout for grommet install  
Available Finish: Black (BL)



**100-WCD-USB**  
**Wireless & USB Charging Drawer**  
Qi enabled wireless charging  
5' cord, UL certified  
1 USB - charging @ 2.1 amps  
1 power  
2.36" / 60mm hole size  
Site install required  
Available Finish: Black (BL)

**C100-RECP-CUSTOM** can be customized to suit specific configuration needs. Please contact customer service for more information and pricing.

Adapter Options:  
Power receptacles  
USB ports  
Ethernet (RJ45) ports  
Phone (RJ11) ports  
HDMI ports  
VGA ports  
Surge protection

Finish Options:  
Anodized Aluminium  
Black  
White  
Bronze



**100-PWRGROM**  
**Power Grommet**  
For conference or work surface tops  
Includes 2 power  
6 ft power cord  
2 openings for data or phone couplers (see below)

**100-DATACP** - Ethernet (RJ45) coupler

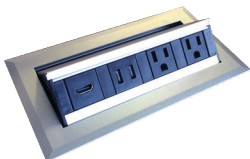
**100-PHONECP** - Phone (RJ11) coupler



**100-RECP-01**  
**Power Grommet**  
2 power  
4 USB Ports - 2 charging only ports @ 2.1 amps and 2 data transfer ports  
1 Ethernet (RJ45) port  
1 phone (RJ11) port  
UL Certified  
List price includes custom cutout for grommet install  
Available Finish: Black (BL)



**100-RECP-02**  
**Premium Power Grommet**  
2 power  
2 USB charging only ports @ 2.1 amps  
1 Ethernet (RJ45) port  
10' power cord, UL certified  
List price includes custom cutout for grommet install  
Available Finish: Premium Aluminium Finish (AL)



**100-RECP-03**  
**Premium Power Grommet**  
2 power  
2 USB charging only ports @ 2.1 amps  
1 HDMI port  
10' power cord, UL certified  
List price includes custom cutout for grommet install  
Available Finish: Premium Aluminium Finish (AL)



**100-RECP-04**  
**Premium Power Grommet**  
2 power  
1 Data  
1 HDMI port  
10' power cord, UL certified  
List price includes custom cutout for grommet install  
Available Finish: Premium Aluminium Finish (AL)

# ACCESSORIES



## 100-DTP2-USB

Clamp to edge of desk or clamp through our grommet holes (clamp width 60mm)  
Fit existing HDL & Heartwood standard rectangular grommet holes!  
2 power  
2 USB charging (charging only)  
angled, bracket mount design  
6' power cord  
cUL certified for use in Canada  
Available Finish: Black (BL)



## 100-PB6-USB

### Power Bar with USB

USB charger - 2- 2.1AMP ports - 5V DC  
- 2.1A per port  
USB charging only  
6 - AC 120V ground plugs  
10' power cord with 90° plug  
CUL certified for use in Canada  
Available Finish: Black (BL)

## Monitor Arms



## 100-MA1

### Pneumatic Monitor Arm - Single

Capacity: 19.8 lbs  
Clamp to desk or grommet mount  
Landscape or portrait orientation  
Holds monitor 13" - 30"  
90° swivel angle  
180° rotation in both directions  
15° tilt angle  
Available Finish: Black (BL) or Silver (SL)



## 100-MA2

### Pneumatic Monitor Arm - Double

Capacity: 16 lbs per arm  
Clamp to desk or grommet mount  
Landscape or portrait orientation  
Holds monitor 13" - 30"  
90° swivel angle  
180° rotation in both directions  
15° tilt angle  
Available Finish: Black (BL) or Silver (SL)



## 100-MA1B

### Finger Touch Pneumatic Monitor Arm - Single

Desk clamp and/or grommet mount  
14" height adjustment range: 5" - 19"  
24.0" arm extension  
90° monitor tilt / 90° VESA rotation  
4.4 lbs. - 19.8 lbs. weight capacity  
Exceeds BIFMA x5.5 requirements  
10yr warranty  
Finger touch height adjustment  
VESA quick release  
36.0" max. monitor  
Available Finish: Black (BL) or Silver (SL)



## 100-MA2B

### Finger Touch Pneumatic Monitor Arm - Double

Desk clamp and/or grommet mount  
14" height adjustment range: 5" - 19"  
24.0" arm extension  
90° monitor tilt / 90° VESA rotation  
4.4 lbs. - 19.8 lbs. weight capacity (per arm)  
Exceeds BIFMA x5.5 requirements  
10yr warranty  
Finger touch height adjustment  
VESA quick release  
32.0" max. monitor  
Available Finish: Black (BL) or Silver (SL)



## 100-LPTP

### Laptop Holder

Attachment for pneumatic monitor arms  
Compatible with 100-MA1, 100-MA2, 100-MA1B and 100-MA2B  
Fits laptop 11" to 15.6"  
Easy install  
Available Finish: Black (BL)



## 100-LCD1

### LCD Single Monitor Arm

Capacity: 22 lbs  
Grommet mount  
Available Finish: Silver (SL)



## 100-LCD2

### LCD Dual Monitor Arm

Capacity: 13.2 lbs per arm  
Grommet mount  
Available Finish: Silver (SL)

# ACCESSORIES

## Storage



**100-MMPUF  
Metal Mobile Storage**  
Box/box/file  
All drawers lock  
Can be keyed alike see 100-COREPACK  
Available Finish: Black (BL), Titanium (TT) and White (WH)



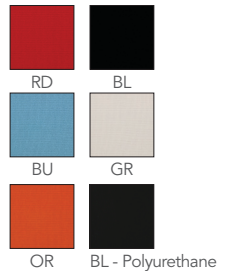
**100-MMPFF  
Metal Mobile Storage**  
File/file  
All drawers lock  
Can be keyed alike see 100-COREPACK  
Available Finish: Black (BL), Titanium (TT) and White (WH)



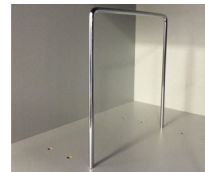
**100-MMPF  
Metal Mobile Storage**  
Box/file  
All drawers lock  
Heavy-duty casters  
Max. additional weight capacity 220lbs  
Can be keyed alike see 100-COREPACK  
Available Finish: Black (BL) & Titanium (TT)



**100-MMPF-CUSHFA (Fabric)  
100-MMPF-CUSHPU  
(Polyurethane)  
Metal Mobile Pedestal Cushion**  
Optional cushion  
Pedestal sold separately  
Easy velcro attachment  
For use with 100-MMPF **ONLY**



**100-COREPACK**  
Locking units ship with random key numbers unless units need to be keyed alike.  
For Keyed alike units order 100-COREPACK -the number of keyed alike units  
Example: 100-COREPACK-3 for three units keyed alike

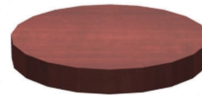


**100-RD  
Record Dividers**  
Set of 6  
Can be ordered for storage units.  
Units are not drilled for record dividers unless specified at the time of order.

## Monitor Stands



**100-1212MS  
Monitor Stand**  
3mm PVC on all exposed edges  
Available Finish: all standard Heartwood laminate colours



**100-SWIVEL  
16" Swivel Monitor Stand**  
Rotates on a ball bearing swivel ring  
Available Finish: all standard Heartwood laminate colours

## CPU Holders



**100-MCPU  
Mobile CPU Holder**  
Adjustable for different width CPU units  
Available Finish: Black (BL)



**100-2-HCPU  
Hanging CPU Holder**  
Fixed location install  
Adjustable for different width CPU units  
Durable heavy gauge steel  
Mounting hardware included  
Available Finish: Black (BL) & White (WH)



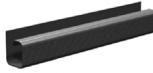
**100-HCPU  
Hanging CPU Holder**  
Track installed, retractable  
Track depth 16"  
Adjustable for different width CPU units  
Swivels 360 degrees  
Supports CPU up to 50lbs  
Durable heavy gauge steel  
Mounting hardware included  
Available Finish: Black (BL)

# ACCESSORIES

## Wire Management



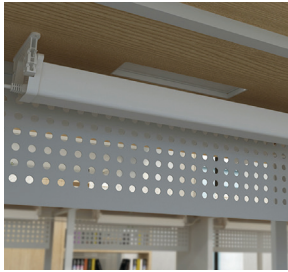
**100-WIRE**  
**Wire Management Kit**  
Includes 5 hangers and mounting hardware  
Available Finish: Light Grey (GR)



**100-CC**  
**Wire Management Channel**  
12" long  
Attached using double sided tape  
Available Finish: Black (BL)



**100-WM1300**  
**Wire Management for Height Adjustable**  
Length can be easily changed  
Available Finish: Black (BL), Silver (SL) & White (WH)

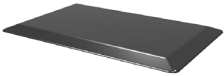


**100-WMT22**  
**22" Wire Management Tray**  
Easy accessibility  
Interlocking units for easy expansion  
Available Finish: White (WH)



**100-1212WMT**  
**Wire Management Tower**  
12' square tower  
safely contains system wires  
Quick click wire access  
Custom height available  
Available in all standard Heartwood laminate finishes

## Anti-fatigue Mat



**100-2030AFM**  
**Anti-fatigue Mat**  
PVC with a high-density polyurethane core  
Easy clean  
Able to with-stand common house fluids such as grease & liquids  
non-curling bevelled edges  
Available Finish: Black (BL)

## Height Adjustable Accessories

### Apollo Accessories



**APO-E1-2CASTER**  
**2 Leg Unit**  
Make height adjustable units mobile with 73mm heavy duty locking casters



**APO-E1-ELEV**  
**Extended Leveler Kit**  
Comes with 2 x 25mm and 2 x 35mm levelers  
Combined with 15mm supplied levelers to level a straight configuration on uneven surfaces.

### Olympus Accessories



**OLY-E1-2CASTER**  
**2 Leg Unit**  
Make height adjustable units mobile with 73mm heavy duty locking casters



**OLY-E1-ELEV**  
**Extended Leveler Kit**  
Comes with 2 x 25mm and 2 x 35mm levelers  
Combined with 15mm supplied levelers to level a straight configuration on uneven surfaces.



# ACCESSORIES

## Task Lights



### **100-LED36TL - 36"**

### **100-LED48TL - 48"**

LED task light  
160° swivel feature  
Max Watt is 180W in-line  
Built-in occupancy option  
Available Finish: Aluminium (AL)



### **100-24TL - 24"**

### **100-36TL - 36"**

### **100-48TL - 48"**

Fluorescent task light  
Available Finish: Black (BL)

## Desk Top Height Adjustable Unit



### **100-DTHA**

Converts traditional desk to standing desk  
Adjusts to heights between 6.5" & 16"  
Gas strut for easy height adjustment  
Durable construction  
Compatible with pneumatic monitor arms  
Available finish: Black (BL)



### **100-2-DTHA**

Heavy-duty steel & melamine construction for maximum stability  
Includes anti-slip pads on base  
Squeeze lever height-adjustment design  
Keyboard weight capacity: 2 kg / 4.4 lbs  
Height range 160mm - 445 mm / 6.3"-17.5"  
Compatible with pneumatic monitor arms  
Available finish: Black (BL)

## Outlines Accessories



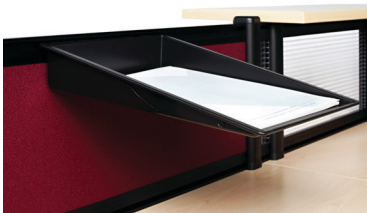
### **OUT-HFRAIL**

Rail mounted metal file hangers



### **OUT-ACCTRY**

Rail mounted plastic accessory tray



### **OUT-LTRPRT**

Rail mounted plastic letter tray - portrait



### **OUT-LTRLND**

Rail mounted plastic accessory tray - landscape



### **OUT-PENCUP**

Rail mounted plastic pencil cup



### **OUT-PHNSPT**

Rail mounted metal hanging phone support bracket