

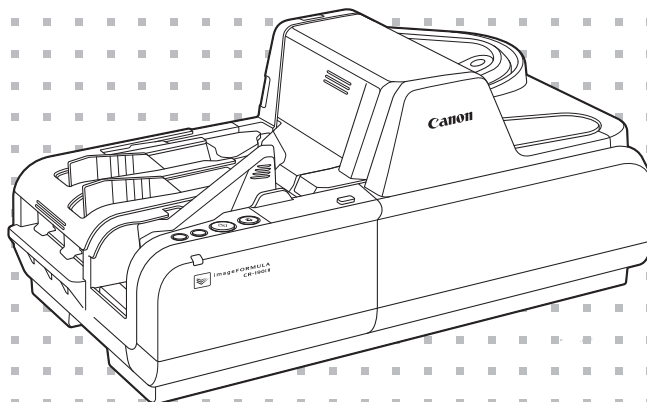
**Canon**

 **imageFORMULA**

**CR-135i II**

**CR-190i II**

# Instructions



Please read this manual before operating this scanner.

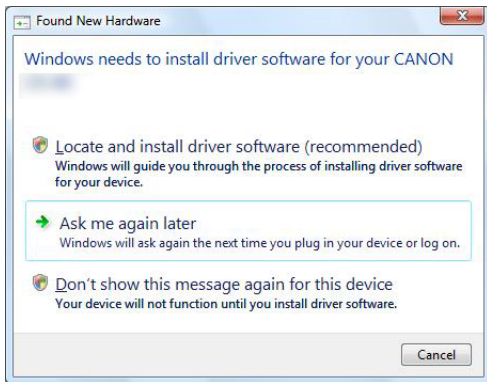
## Connecting the Scanner to a Computer

---

Connect the CR-135i II/CR-190i II to a computer as follows. Make sure to install the software before connecting the scanner to a computer.

- If you connect the computer and turn ON the CR-135i II/CR-190i II before installing the software, the following wizard screen appears. If this happens, click [Cancel], turn OFF the CR-135i II/CR-190i II, and then install the software.

The following wizard screen is an example in Windows 7. When a similar wizard screen appears in Windows 8.1/10, click [Cancel].



Wizard Screen (Windows 7)

### 1 Install the software

Install the Scanning Utility for CR-135i/CR-190i in the setup disc provided with the CR-135i II/CR-190i II. (See "Installing the Software," on p. 18.)

### 2 Connect the scanner to a computer

Connect the CR-135i II/CR-190i II and the computer with a USB. (See "Connecting the Scanner to a Computer," on p. 19.)

### 3 Turn ON the power

Turn ON the power of the CR-135i II/CR-190i II. (See "Turning ON the Power," on p. 20.)

### 4 Automatically installing the device driver

The device driver is installed automatically when Windows recognizes the CR-135i II/CR-190i II as new hardware. (See p. 21.)

## FCC REGULATIONS (For 120V model)

Check Reader, Model M111071/M111021/M111072/M111022

This device complies with Part 15 of the FCC Rules. Operation is subject to the following two conditions:

(1) This device may not cause harmful interference, and (2) this device must accept any interference received, including interference that may cause undesired operation.

**Note:** This equipment has been tested and found to comply with the limits for a Class B digital device, pursuant to Part 15 of the FCC Rules. These limits are designed to provide reasonable protection against harmful interference in a residential installation. This equipment generates, uses, and can radiate radio frequency energy and, if not installed and used in accordance with the instructions, may cause harmful interference to radio communications. However, there is no guarantee that interference will not occur in a particular installation. If this equipment does cause harmful interference to radio or television reception, which can be determined by turning the equipment off and on, the user is encouraged to try to correct the interference by one or more of the following measures:

- Reorient or relocate the receiving antenna.
- Increase the separation between the equipment and receiver.
- Connect the equipment into an outlet on a circuit different from that to which the receiver is connected.
- Consult the dealer or an experienced radio/TV technician for help.

Use of shielded cable is required to comply with class B limits in Subpart B of Part 15 of FCC Rules.

Do not make any changes or modifications to the equipment unless otherwise specified in the manual. If such changes or modifications should be made, you could be required to stop operation of the equipment.

Canon U.S.A. Inc.

One Canon Park, Melville, NY 11747, U.S.A.

Tel. No. (800)652-2666

## RADIO INTERFERENCE REGULATIONS (For 120V models)

This digital apparatus does not exceed the Class B limits for radio noise emissions from digital apparatus as set out in the interference-causing equipment standard entitled "Digital Apparatus", ICES-003 of the Industry Canada.

## RÈGLEMENT SUR LE BROUILLAGE RADIOÉLECTRIQUE (For 120V models)

Cet appareil numérique respecte les limites de bruits radioélectriques applicables aux appareils numériques de Classe B prescrites dans la norme sur le matériel brouilleur: "Appareils Numériques", NMB-003 édictée par l'Industrie Canada.

## ENERGY STAR® Office Equipment Program



This program is for U.S.A and Canada.

As an ENERGY STAR® Partner, CANON ELECTRONICS INC. has determined that this machine meets the ENERGY STAR® Program guidelines for energy efficiency.

The ENERGY STAR® Office Equipment Program is an international program that promotes energy saving through the use of computers and other office equipment. The program backs the development and dissemination of products with functions that effectively reduce energy consumption. It is an open system in which business proprietors can participate voluntarily. The targeted products are office equipment, such as computers, monitors, printers, fax, machine, copiers, and scanners. The standards and logos are uniform among participating nations.

This model doesn't provide "setting options" for power management.

## European Union (and EEA) only.



This symbol indicates that this product is not to be disposed of with your household waste, according to the WEEE Directive (2002/96/EC) and your national law. This product should be handed over to a designated collection point, e.g., on an authorized one-for-one basis when you buy a new similar product or to an authorized collection site for recycling waste electrical and electronic equipment (EEE). Improper handling of this type of waste could have a possible negative impact on the environment and human health due to potentially hazardous substances that are generally associated with EEE. At the same time, your cooperation in the correct disposal of this product will contribute to the effective usage of natural resources. For more information about where you can drop off your waste equipment for recycling, please contact your local city office, waste authority, approved WEEE scheme or your household waste disposal service. For more information regarding return and recycling of WEEE products, please visit [www.canon-europe.com/environment](http://www.canon-europe.com/environment). (EEA: Norway, Iceland and Liechtenstein)

## Für EMVG

Dieses Produkt ist zum Gebrauch im Wohnbereich, Geschäftsbereich und Gewerbebereich sowie in Kleinbetrieben vorgesehen.

## Model Names

The following names may be provided for the safety regulations in each sales region of the Check Reader.

CR-135i II: Model M111071

CR-190i II: Model M111021

CR-135i II UV: Model M111072

CR-190i II UV: Model M111022

## Trademarks

- Canon and the Canon logo are registered trademarks, of Canon Inc. in the United States and may also be trademarks or registered trademarks in other countries.
- imageFORMULA is a trademark of CANON ELECTRONICS INC.
- Microsoft, Windows, Windows 7, Windows 8.1 and Windows 10 are registered trademarks or trademarks of Microsoft Corporation in the United States and other countries.
- Microsoft product screen shot(s) reprinted with permission from Microsoft Corporation.
- Adobe, Acrobat, and Adobe Reader are registered trademarks or trademarks of Adobe Systems Incorporated in the United States and other countries.
- Other product and company names herein are, or may be, the trademarks of their respective owners.
- Ranger is a trademark of Silver Bullet technology, Inc.

## Copyright

Copyright 2015 by CANON ELECTRONICS INC. All rights reserved.

No part of this publication may be reproduced or transmitted in any form or by any means, electronic or mechanical, including photocopying and recording, or by any information storage or retrieval system without the prior written permission of CANON ELECTRONICS INC.

## Reproduction Warning

This device is designed to be used in a legal manner, in accordance with all applicable laws, including, but not limited to, counterfeit and copyright laws, as well as laws pertaining to national security.

Any person(s) found to have reproduced any of the following materials (regardless of whether such reproduction was intentional or not) for the purpose of misrepresenting such material as the original may be prosecuted in accordance with the applicable laws and regulations.

- Paper money or bank notes (domestic and foreign)
- Postage stamps, revenue stamps, or other similar stamps
- Stock certificates, bond certificates, promissory notes, cheques, or other valuable certificates
- Passports, licenses, or other certificates or documents issued by government officials or agencies

This is not an exhaustive list.

Canon is not responsible for how this scanner is used by an individual.

Please note that certain intellectual property is protected by copyright law, and copyrighted items may not be reproduced without the express permission of the copyright holder except for personal or household use under limited circumstances.

## Disclaimers

The information in this document is subject to change without notice.

CANON ELECTRONICS INC. MAKES NO WARRANTY OF ANY KIND WITH REGARD TO THIS MATERIAL, EITHER EXPRESS OR IMPLIED, EXCEPT AS PROVIDED HEREIN, INCLUDING WITHOUT LIMITATION, THEREOF, WARRANTIES AS TO MARKETABILITY, MERCHANTABILITY, FITNESS FOR A PARTICULAR PURPOSE OF USE OR NON-INFRINGEMENT. CANON ELECTRONICS INC. SHALL NOT BE LIABLE FOR ANY DIRECT, INCIDENTAL, OR CONSEQUENTIAL DAMAGES OF ANY NATURE, OR LOSSES OR EXPENSES RESULTING FROM THE USE OF THIS MATERIAL.

CANON ELECTRONICS INC. IS NOT LIABLE FOR THE STORAGE AND HANDLING OF DOCUMENTS SCANNED WITH THIS PRODUCT, OR THE STORAGE AND HANDLING OF THE RESULTING SCANNED IMAGE DATA.

IF YOU INTEND TO DISCARD THE ORIGINALS OF THE SCANNED DOCUMENTS, YOU ARE RESPONSIBLE FOR INSPECTING THE SCANNED IMAGES AND VERIFYING THAT THE DATA IS INTACT. THE MAXIMUM LIABILITY OF CANON ELECTRONICS INC. UNDER THIS WARRANTY IS LIMITED TO THE PURCHASE PRICE OF THE PRODUCT COVERED BY THE WARRANTY.

# INTRODUCTION

---

Thank you for purchasing the Canon Check Reader CR-135i II/CR-190i II.

Please read this manual thoroughly before using the machine in order to familiarize yourself with its capabilities, and to make the most of its many functions. Unless otherwise noted, CR-190i II is used for both the CR-190i II and the CR-190i II UV models, and CR-135i II is used for both the CR-135i II and the CR-135i II UV models, throughout this manual.

## Manuals for the CR-135i II/CR-190i II

The following manuals are provided with the CR-135i II/CR-190i II. Be sure to read these manuals thoroughly before using the scanner. (The Installation Guide and the Operation & Maintenance Guide are extracted from the Instructions.) Electronic manual is stored as a PDF file on the supplied Setup Disc and requires Adobe Reader to open. (You can download Adobe Reader from the Adobe Web site.)

### Installation Guide (Supplied with the scanner/Electronic Manual)

Describes the procedure for setting up the CR-135i II/CR-190i II for scanning. Set up the CR-135i II/CR-190i II in accordance with the Installation Guide. For details on the CR-135i II/CR-190i II, refer to the *Instructions* (electronic manual).

### Operation & Maintenance Guide (Supplied with the scanner/Electronic Manual)

Describes the basic operations for using the CR-135i II/CR-190i II, troubleshooting, and maintenance. For details on the settings of the CR-135i II/CR-190i II, refer to the *Instructions* (electronic manual).

### Instructions (Electronic Manual): This Manual

Describes how to use the scanner, and includes instructions for configuring the scanner settings, as well as handling, maintenance, and troubleshooting information.

## Symbols Used in This Manual

The following symbols are used in this manual to explain procedures, restrictions, handling precautions, and instructions that should be observed for safety.

### WARNING

Indicates a warning concerning operations that may lead to death or injury to persons if not performed correctly. To use the machine safely, always pay attention to these warnings.

### CAUTION

Indicates a caution concerning operations that may lead to injury to persons, or damage to property if not performed correctly. To use the machine safely, always pay attention to these cautions.

### IMPORTANT

Indicates operational requirements and restrictions. Be sure to read these items carefully to operate the machine correctly, and avoid damaging the machine.

### NOTE

Indicates a clarification of an operation, or contains additional explanations for a procedure. Reading these notes is highly recommended.

## Table of Contents

Connecting the Scanner to a Computer.....	2	Turning ON and OFF the Power .....	20
INTRODUCTION .....	5	Turning ON the Power .....	20
Manuals for the CR-135i II/CR-190i II .....	5	Turning OFF the Power.....	21
Symbols Used in This Manual.....	5	Preparing the Ink Cartridge.....	22
Important Safety Instructions .....	8	About the Ink Cartridge .....	22
Handling .....	8	Setting the Ink Cartridge and Adjusting the Print Position .....	22
Installation Location .....	9	Software.....	24
Power Supply .....	10	How to Use the Software .....	24
Moving the Scanner .....	10	How to Use the Scanning Utility.....	24
Introduction to the CR-135i II/CR-190i II.....	11	How to Use the Ranger .....	26
Features of the CR-135i II/CR-190i II .....	11	Uninstalling the Software .....	27
Features .....	11	Document Feeding and Scanning.....	29
Packaging: What Is in the Box? .....	12	Documents .....	29
Part Names .....	13	Document .....	29
Front View .....	13	Envelope .....	30
Rear View.....	15	Using Ultrasonic Double Feed Detection .....	31
Connector.....	15	Placing Documents .....	31
Exterior Dimensions.....	15	Document Feeding and Scanning.....	32
Preparation Before Use .....	16	Scan Procedure .....	33
Setting Up the Scanner .....	16	Separation OFF Mode.....	35
Checking Your Operating Environment .....	17	Auto Power OFF Settings .....	35
Installing the Software.....	18	Troubleshooting .....	37
Installing the Scanning Utility .....	18	When the Scanner Is Not Recognized.....	37
Connecting the Scanner to a Computer.....	19	Clearing Paper Jams .....	37
USB Connections .....	19	Feeding Trouble.....	39
Connecting the Power Cord .....	20	When the Scanned Image Is Not Normal .....	41

Maintenance .....	42
Daily Cleaning .....	42
Cleaning the Main Unit .....	42
Cleaning the Feed Path .....	42
Cleaning the Scanning Glass and Rollers .....	44
Cleaning the Magnetic Heads .....	47
Cleaning the Ink Jet Nozzles .....	48
Cleaning with the Cleaning Cards (United States Only) .....	49
Maintenance .....	50
Replacing the Ink Cartridge .....	50
Replacing the Ink Disposal Tank .....	51
Replacing the Rollers .....	53
Adjusting the Separation Roller Gap .....	56
Specifications .....	57
Scanner Specifications .....	57
Index .....	58

# Important Safety Instructions

---

## Handling

### WARNING

- Never install and operate the scanner near flammable substances, such as alcohol, paint thinner, benzene, or any other type of volatile solution.
- Never damage or modify the power cord, and never place heavy objects on the power cord.
- Always make sure that your hands are dry when you are handling the power cord or power plug. Never grasp the power plug when your hands are wet.
- Never plug the scanner into a multiplug power strip.
- Never bundle, wrap, or tie the power cord around itself or another object. Connect the power plug securely into the power outlet.
- Use only the power cord and power plug provided with the scanner.
- Never attempt to disassemble or modify the scanner.
- Never use flammable aerosol products near the scanner.
- Before you clean the scanner, turn the power OFF and disconnect the power cord from the power outlet.
- To clean the scanner's exterior, use a firmly wrung cloth, moistened slightly with water or mild detergent. Never use any type of volatile solution, such as alcohol, benzene or paint thinner.
- If you hear strange sounds, detect smoke or abnormal heat, sense vibration, or smell odd odors around the scanner, turn OFF the power switch immediately and disconnect the power cord from the power outlet. Contact your local authorized Canon dealer or service representative to have the scanner serviced.

- Handle the scanner with care. Avoid shock and vibration to the scanner caused by reckless handling. If you suspect the scanner has been accidentally damaged, turn OFF the power switch immediately and disconnect the power cord from the power outlet. Contact your local authorized Canon dealer or service representative to have the scanner serviced.
- Before you move the scanner, always turn OFF the power and disconnect the power cord from the power outlet.
- This product emits low level magnetic flux. If you use a cardiac pacemaker and feel abnormalities, please be away from this product and consult your doctor.

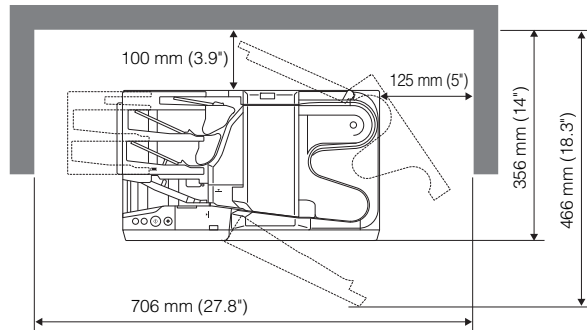
### CAUTION

- To avoid damage to the scanner, never place the scanner on an unstable or vibrating surface. The scanner may tip or fall over, causing injury.
- To avoid overheating and causing a fire, never block the air vents on the back of the scanner.
- Keep all liquids, beverages, or any type of liquid, and clips, staples, necklaces, or other metal objects away from the scanner. If you accidentally spill liquid or drop a metal object into the scanner, turn OFF the power immediately and disconnect the power cord from the power outlet. Contact your local authorized Canon dealer or service representative to have the scanner serviced.
- Never install the scanner in humid or dusty locations. Doing so may cause a fire or electrical shock.
- Never place heavy objects on top of the scanner, as these objects may tip or fall over, and cause injury.



- When you remove the power cord, grip it by the power plug head. Never attempt to disconnect the power cord from the power outlet by pulling on the power cord. Doing so may damage or expose the cord's internal wiring, and cause a fire or electrical shock.
- Keep the area around the power outlet clear of all obstacles so you can disconnect the power cord easily at all times.
- Never spill water or volatile solutions (alcohol, benzene, paint thinner) into the scanner. Doing so may cause a fire or electrical shock.
- When the scanner is not being used for a long period of time, disconnect the power cord from the power outlet.
- Avoid wearing loose fitting clothing, dangling jewelry, long ties, or long hair that could become entangled with moving parts, especially the rollers that feed paper into the scanner. If such objects become entangled, immediately disconnect the power plug from the power outlet to stop the scanner.
- Be careful when you are loading a document or clearing a paper jam. It is possible that the paper edges may cut your fingers.
- Do not open the Maintenance Cover while the scanner is operating. Doing so may result in a malfunction or injury.
- Do not touch the pins and contacts on the scanner's connector with your hands. Doing so may result in a malfunction.
- Do not touch anything except the operation buttons when the jogger is operating (CR-190i II/CR-190i II UV only) or documents are being fed.
- Do not turn the scanner upside down. The ink may leak from the ink disposal tank.

## Installation Location



For operation, maintenance, and ventilation, make sure that there is enough space around the scanner, as shown in the illustration above.

Avoid placing the scanner in the following places. It may cause a malfunction and adversely affect the scanner or your computer.

- Places exposed to direct sunlight  
If installation in such places is unavoidable, provide a curtain or similar object to shade the scanner.
- Places subject to dust and fumes  
Dust and cigarette fumes adversely affect the components inside the scanner.
- Near running water, a heat source, water vapor, or in an area, such as a laboratory exposed to ammonia gas, paint thinner, or other volatile chemicals
- Places subject to excessive vibration and shock

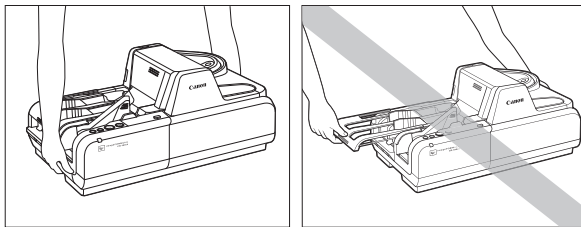
- Places subject to rapid changes in temperature or humidity  
Condensation occurring inside the scanner may impair image quality. Place the scanner in a room that is within the following range:  
Room temperature: 10°C to 32.5°C (50°F to 90.5°F)  
Relative humidity: 20% to 80% RH  
Use the recommended operating environment for the ink cartridge when using the imprinter.
- Near electronic equipment or heavy equipment that generates a strong magnetic field, such as a speaker, TV, and radio

## Power Supply

- Connect only to a power outlet of the rated voltage and power supply frequency (either 120 V, 60 Hz or 220-240 V, 50/60 Hz, depending on your region).
- Make sure that the scanner is connected to an independent power outlet. Do not plug the scanner into an outlet shared with another device. If you use an extension cord, make sure that the extension cord is rated for the current requirements of the scanner.
- If you are unsure of anything relating to the power supply, contact your local authorized Canon dealer or service representative for further information.
- Never place an object on top of the power cord or step on the power cord.
- Never bundle the power cord or wrap the cord around an object, such as a table leg.
- Do not tug on the power cord. When you remove the power cord, grip it by the power plug head.
- Keep the area around the power outlet free of obstacles.

## Moving the Scanner

When you move the CR-135i II/CR-190i II, hold it firmly with both hands and carry it carefully. Do not hold the scanner by the Eject Stopper. The scanner weighs approximately 8.0 kg (17.1 lb) or 8.4 kg (18.5 lb).



### WARNING

**When moving the scanner, be sure to turn OFF the power and remove any cables. If the cables are not removed before moving the scanner, you may damage the plugs or connector by forcibly pulling them out.**

# Introduction to the CR-135i II/CR-190i II

This chapter describes the features of the CR-135i II/CR-190i II scanner, what comes packaged in the box, and the names and functions of parts on the scanner.

## Features of the CR-135i II/CR-190i II

The Canon Check Reader CR-135i II/CR-190i II is a scanner with magnetic heads that can read checks and other documents that are printed with MICR (Magnetic Ink Character Recognition) compatible fonts, and is capable of OCR (Optical Character Recognition).

### Features

#### High-Speed Scanning (200 dpi American checks)

CR-135i II: 135 cpm

CR-190i II: 190 cpm

CR-135i II UV: 120 cpm (UV Scan mode)

CR-190i II UV: 160 cpm (UV Scan mode)

#### Supports Large Documents

Documents up to 108 mm x 245 mm (4.3" x 9.6") can be scanned.

#### High Durability

The scanner has a high durability of 24 million scans.

#### Compact Size

#### Supports Black-and-White (Binary) and Grayscale Output

#### Reads MICR Characters

A magnetic head is used to scan MICR characters.

#### Supports OCR (Optical Character Recognition)

Character images, such as E13B, OCR-A, OCR-B, and check writer are recognized as characters by the OCR function.

#### Supports UV scanning (UV models only)

The CR-135i II UV/CR-190i II UV can scan images that are printed with UV fluorescent ink. This function only scans the front side of documents.

#### Easy to Maintain

Large Maintenance Covers make handling paper jams and cleaning easy.

#### Jogger Mechanism Is Standard (CR-190i II/CR-190i II UV only)

A jogger mechanism, which uses vibration to align documents, comes standard equipped with the CR-190i II/CR-190i II UV.

#### Separation OFF Mode

You can scan the following documents:

- Thick documents
- Documents that contain two or more pages together as one document
- Documents that have a rough surface
- Duplicate forms that have sticky edges

#### Paper Thickness Adjustment Mechanism

Adjust the Separation Roller gap to the thickness of the paper being fed.

### Three Eject Pockets and Automatic Sorting Mechanism

The scanner has three Eject Pockets and the documents are automatically ejected to each pocket according to sort methods. The scanner fits various scan operations using this mechanism.

### Ultrasonic Double Feed Detection and Double Feed Detect OFF Button (Scanning Utility for CR-135i/CR-190i)

The scanner detects double-fed documents using ultrasonic, and can turn OFF the function with the Function Button.

### Drop-Out Color

This function enables drop-out scanning of a specific color in the document.

### Imprinter Is Standard Equipment

An imprinter mechanism, which prints text (4 lines) or a bitmap on documents as they are scanned, comes standard equipped with the scanner. The imprinter's ink cartridge is not included, and must be purchased separately. (See "About the Ink Cartridge," on p. 22.)

### Eject Pocket Full Detection (Scanning Utility for CR-135i/CR-190i)

Detects when any one of the three Eject Pockets is full and stops scanning. This function is available only on CR-135i II/CR-190i II/CR-190i II UV. (See "Scan Procedure," on p. 33.)

### Placing Additional Documents

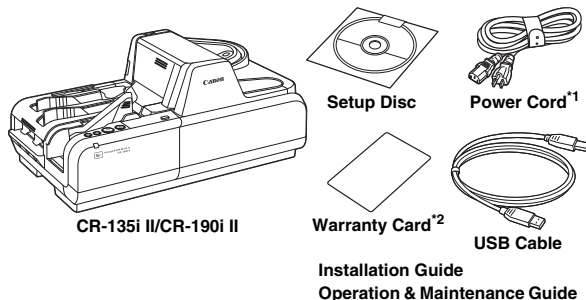
You can place additional documents while the machine is scanning.

### Replaceable rollers and ink disposal tank

You can replace the rollers (Pickup Roller, Feed Roller, and Separation Roller) and the ink disposal tank.

## Packaging: What Is in the Box?

Make sure that you have everything shown below. Check every item you have removed from the box. If any items are missing, contact your local authorized Canon dealer.



\*1 The power cord varies, according to the country of purchase.

\*2 For the United States and Canada only.

## Part Names

This section describes the names and functions of each part. Before you connect the CR-135i II/CR-190i II, familiarize yourself with its parts and their functions.

### Front View

#### Operation Buttons

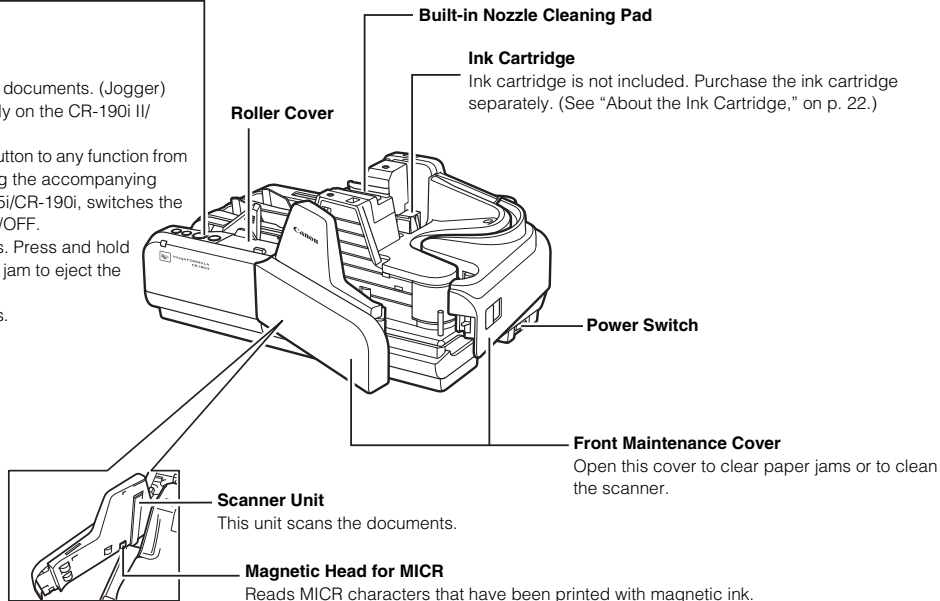


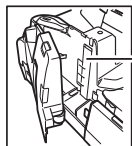
**JOG:** Uses vibration to align the documents. (Jogger)  
This button is available only on the CR-190i II/  
CR-190i II UV.

**Function (F):** You can assign this button to any function from  
an application. When using the accompanying  
Scanning Utility for CR-135i/CR-190i, switches the  
double feed detection ON/OFF.

**START:** Starts scanning operations. Press and hold  
this button during a paper jam to eject the  
jammed document.

**STOP:** Stops scanning operations.





**Scanner Unit**

This unit scans the documents.

**Back Maintenance Cover**

Open this cover to clear paper jams or to clean the scanner.

**Top Cover**

**Eject Pocket**

Documents are separated with flappers into three pockets. (See p. 34)

**Eject Stopper**

Pull out the Eject Stopper to prevent documents from falling off the output tray.

**Adjustment Dial Cover**

**Adjustment Dial**

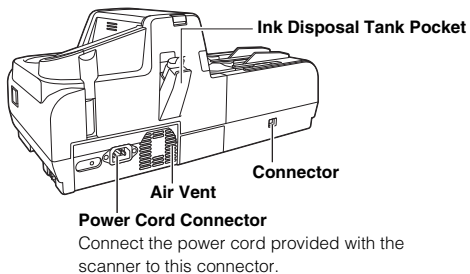
Adjust the Separation Roller gap if feeding errors occur too frequently. (See "Adjusting the Separation Roller Gap," on p. 56.)

**Separation OFF Mode Button**

Use this button when you want to scan the following documents (See "Separation OFF Mode," on p. 35.):

- Thick documents
- Documents that contain two or more pages together as one document
- Documents that have a rough surface
- Duplicate forms that have sticky edges

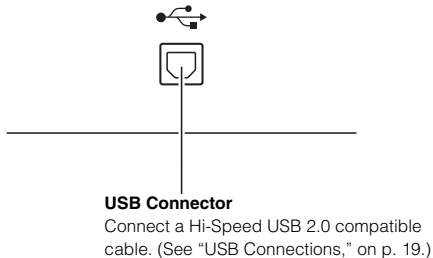
## Rear View



### CAUTION

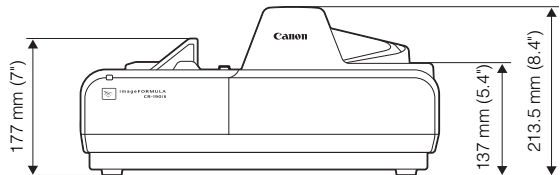
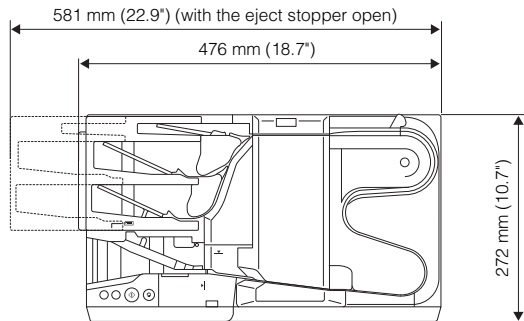
To avoid overheating and causing a fire, never block the air vents on the back of the scanner.

## Connector



## Exterior Dimensions

Units: millimeters (units in parenthesis are inches)



# Preparation Before Use

This chapter describes how to prepare the scanner to scan documents.

## Setting Up the Scanner

Perform the following steps to set up the CR-135i II/CR-190i II. Refer to the section for each step for details about that step.

**1 Check your operating environment.** (See “Checking Your Operating Environment,” on p. 17.)



**2 Install the software.** (See “Installing the Software,” on p. 18.)

Install the Scanning Utility provided with the CR-135i II/CR-190i II.



**3 Connect the scanner to a computer.** (See “Connecting the Scanner to a Computer,” on p. 19.)



**4 Turn ON the power.** (See “Turning ON the Power,” on p. 20.)



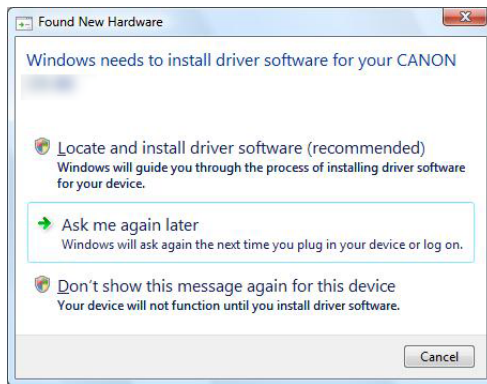
**5 Automatically installing the device driver.** (See p. 21.)

The device driver is installed automatically when Windows recognizes the CR-135i II/CR-190i II.

## ! IMPORTANT

- To have the device drivers installed automatically when the computer recognizes the CR-135i II/CR-190i II, the software needs to be installed before the CR-135i II/CR-190i II is connected to the computer.
- If you connect the computer and turn ON the CR-135i II/CR-190i II before installing the software, the following wizard screen appears. If this happens, click [Cancel], turn OFF the CR-135i II/CR-190i II, and then install the software.

The following wizard screen is an example in Windows 7. When a similar wizard screen appears in Windows 8.1/10, click [Cancel].



Wizard Screen (Windows 7)



## Checking Your Operating Environment

The following computer system requirements are recommended for using the CR-135i II/CR-190i II.

### Operating Systems:

- Microsoft Windows 7 (32/64bit) SP1 or later
- Microsoft Windows 8.1 (32/64bit)
- Microsoft Windows 10 (32/64bit)
- Microsoft Windows Server 2008 R2 Service Pack 1 or later
- Microsoft Windows Server 2012 R2
- Microsoft Windows Server 2016
- Microsoft Windows Server 2019

This is the environment as of December 2018.

For the latest software support information, go to the Products page on the Canon website.

### Specifications:

- CPU: Intel Core2 Duo 3.0 GHz or faster
- Memory: 1 GB or more
- USB 2.0 interface

### Interface Cable

- Use the cable provided or a Hi-Speed USB 2.0 interface cable to connect to the computer's USB port.

## IMPORTANT

- If you use the USB interface that was provided as standard with your computer:
  - Use the most recently available USB 2.0 driver provided by Microsoft. Contact your local authorized Canon dealer for more detailed information.
  - Not all USB interfaces provided as standard with personal computers are guaranteed. Contact your local authorized Canon dealer for more detailed information.
  - Scanning speeds are slower if your computer's standard USB interface is USB 1.1.
  - You should use the USB cable originally bundled with the scanner or a Hi-Speed USB 2.0 compatible cable.
- If the CPU, memory, interface card, and other specifications do not satisfy the installation requirements, the scanning speed may be greatly reduced and transmission may take longer.
- Even if the computer satisfies the system requirements, the scanning speed may vary, depending on the specifications and operating environment of the computer and the specified scan settings.

## Installing the Software

The following software applications are provided on the setup disc that is packaged with the scanner. Make sure to open and read the Readme.txt file on the setup disc before installing the software.

### Scanning Utility

Canon Scanning Utility is an application that provides scanning, file saving, image viewing, printing, and various other functions. A dedicated scanner driver is installed after you install the utility software.

### Ranger

Ranger is an API software. For details, see “About the Ranger,” on p. 26.

### ! IMPORTANT

- The Scanning Utility includes a device driver so that Windows can recognize the CR-135i II/CR-190i II. Be sure to install the Scanning Utility before connecting the CR-135i II/CR-190i II to the computer.
- Some functions mentioned in this manual may not be operated in some applications.

## Installing the Scanning Utility

Follow the instructions below to install the Scanning Utility and the dedicated driver.

### NOTE

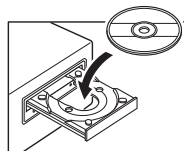
The dedicated scanner driver is installed after the Scanning Utility has been installed.

- 1 Turn ON your computer, and log on to Windows.

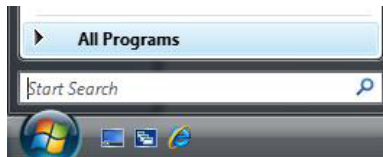
### ! IMPORTANT

Be sure to log on as the Administrator.

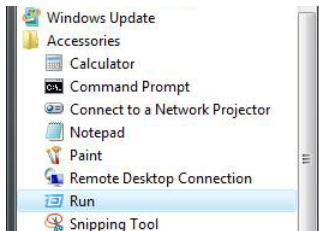
- 2 Insert the setup disc into the Disc drive.  
This manual assumes that “D” is assigned to your Disc drive.



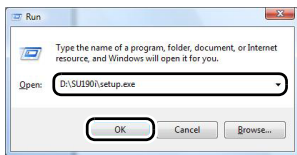
- 3 Click [Start], and then click [All Programs].  
The procedure in Windows 7/8.1/10 is different from the ones described in this manual. Refer to the Windows 7/8.1/10 “Help and Support Center” to select [Run].



- 4 Click [Accessories], and then click [Run].



- 5 Enter "D:\SU190\setup.exe" in the [Open] fields, and then click [OK].



Installation starts.

- 6 Follow the instructions on the screen to complete the installation.

### ! IMPORTANT

The computer may need to be restarted, after the installation, depending on the operating system. If this is necessary, make sure to restart the computer.

## Connecting the Scanner to a Computer

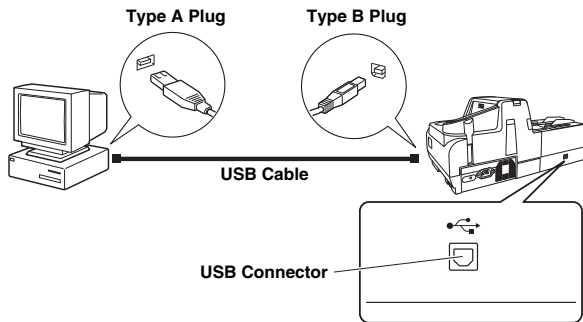
The only way to connect the scanner to your computer is with a USB cable.

### ! CAUTION

- Do not turn OFF the scanner or remove the interface cable when an application is running.
- Turn OFF the computer and the scanner before changing the cable.

## USB Connections

Connect the scanner and the computer with the USB cable provided or a Hi-Speed USB 2.0 cable.



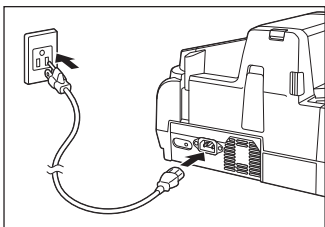
### 📄 NOTE

Connect the type B plug (square) to the scanner and connect the type A plug (flat) to the USB port on the computer.

## Connecting the Power Cord

Connect the power cord.

Make sure to use only the power cord provided with the scanner.



### **!** WARNING

When connecting the power cord, follow these precautions. Failure to do so may cause a fire or electrical shock.

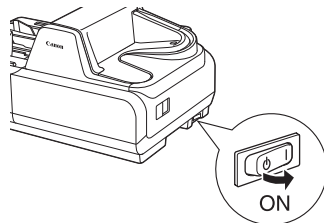
- Never grasp the power plug when your hands are wet.
- Never plug the scanner into a multiplug power strip.
- Never bundle or tie the power cord around itself or another object.
- Connect the power plug securely into the power outlet.
- Use only the power cord and power plug provided with the scanner.
- Before you connect the power cord, make sure to turn OFF the power switch.
- Connect only to a power outlet of the rated voltage and power supply frequency (either 120 V, 60 Hz or 220-240 V, 50/60 Hz, depending on your region).
- Do not plug the scanner into a power outlet shared with another device. If you use an extension cord, make sure that the extension cord is rated for the current requirements of the scanner.

## Turning ON and OFF the Power

Follow the procedures below to turn the scanner power ON and OFF.

### Turning ON the Power

- 1 To turn ON the scanner, press the Power Switch to the “ | ” position.



### **!** IMPORTANT

- When you turn ON the power, the power LED lights and remains lit.
- If the scanner does not work, or the power LED continues to flash, there is a problem with the scanner. Turn OFF the power, and contact your local authorized Canon dealer or service representative to have the scanner serviced.

### **!** WARNING

If you hear strange sounds, detect smoke or abnormal heat, sense a vibration, or smell odd odors around the scanner, turn OFF the power immediately and disconnect the power cord from the power outlet. Contact your local authorized Canon dealer or service representative to have the scanner serviced.

**2** Turn ON your computer.

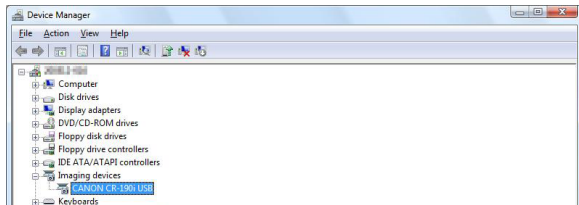
**3** Windows recognizes the CR-135i II/CR-190i II as new hardware, and installation starts automatically.



(Windows 7)

## NOTE

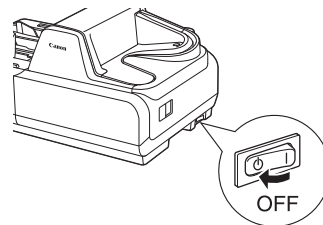
The CR-135i II/CR-190i II will be registered as "CANON CR-135i USB" or "CANON CR-190i USB" in the Imaging Device directory.



## Turning OFF the Power

**1** Turn OFF your computer.

**2** To turn OFF the scanner, press the Power Switch to the "⏻" position.



## CAUTION

- Wait at least 10 seconds before turning the scanner back ON.
- For your safety, disconnect the power plug from the power outlet if you are not using the scanner for a long period of time.

## Preparing the Ink Cartridge

This section describes how to prepare the ink cartridge so that you can use the imprinter to print text or a bitmap on scanned documents.

### About the Ink Cartridge

The ink cartridge is not included with the scanner. Purchase an ink cartridge separately, as shown below.

#### Compatible ink cartridges:

Region	Canon Ink Cartridge
North America/ South America	PG-145/ 145XL, 245/ 245XL
EU	PG-445/ 445XL, 545/ 545XL
Asia/ Oceania	PG-645/ 645XL, 745/ 745XL

### ! IMPORTANT

These ink cartridges are available for 5 years after production has stopped.

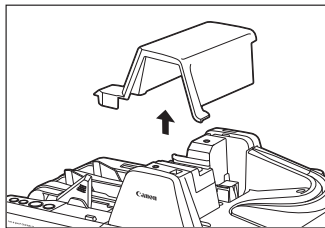
### Setting the Ink Cartridge and Adjusting the Print Position

The ink cartridge needs to be set to print. Set the ink cartridge according to the following procedure. You can adjust the print position to two different levels.

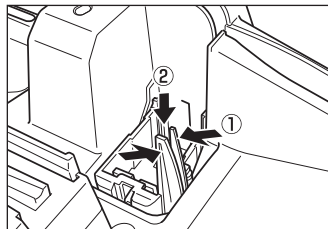
### ! IMPORTANT

- To set the ink cartridge, turn the scanner OFF before removing the Top Cover. After the ink cartridge is set, replace the Top Cover, and then turn the scanner back ON.
- Finish up the unpacked ink cartridge as soon as possible. More frequent cleaning of the ink cartridge is required if long time elapses after unpacking.

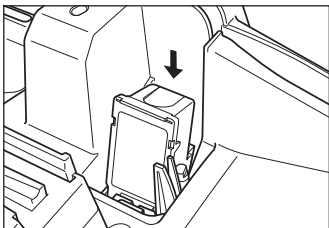
#### 1 Remove the Top Cover.



#### 2 Squeeze the Print Position Adjustment Lever, and push it down to the bottom position.



- 3** Place the ink cartridge shown in the diagram below.



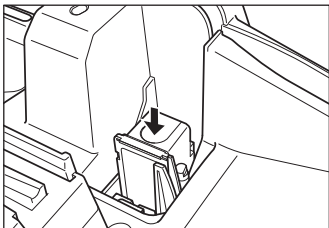
**CAUTION**

Do not touch the electrical contact on the cartridge. Doing so may cause a malfunction.

**NOTE**

Do not use more than one cartridge by rotation. If you do so, applications cannot check the ink level precisely.

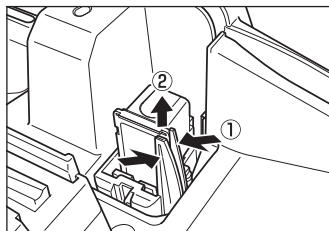
- 4** Push down the ink cartridge until it clicks into place.



**IMPORTANT**

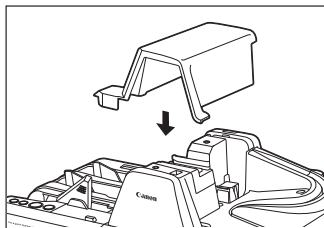
Make sure that the ink cartridge is securely in place.

- 5** Squeeze the Print Position Adjustment Lever and move it to adjust the print position.



Top:  
51.5 mm (2.03") from the  
bottom edge of the  
document  
Bottom:  
31.5mm (1.24") from the  
bottom edge of the  
document

- 6** Carefully replace the Top Cover.



# Software

This chapter describes how to use the Scanning Utility and the Ranger.

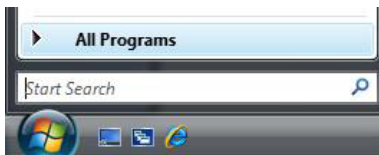
## How to Use the Software

This section describes how to start up the Scanning Utility so that you can use the scanner. Read the Help files for the Scanning Utility for information on how to use it.

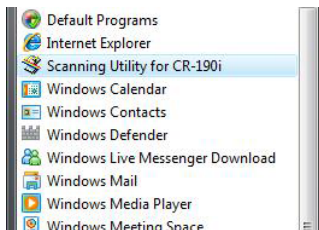
### How to Use the Scanning Utility

This section describes the procedure for using the Scanning Utility. Read the [Help] file in [Scanning Utility] for more information.

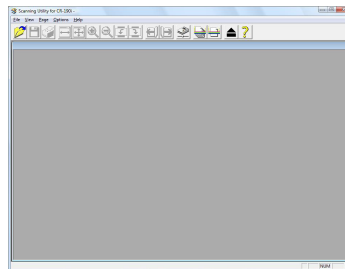
- 1 Click [Start], and then click [All Programs].



- 2 Click [Scanning Utility for CR-135i/CR-190i].

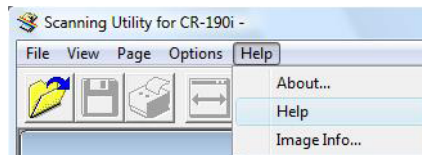


- 3 Start the Scanning Utility.



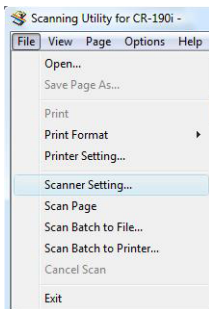
#### NOTE

The basic operation of the Scanning Utility is noted in the Scanning Utility help file. On the [Help] menu, click [Help] to view the explanation.



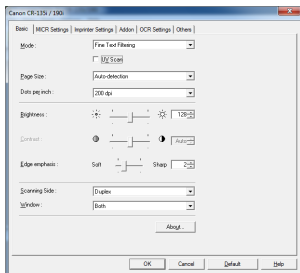


- 4 Select [Scanner Setting] from the [File] menu.



The Settings dialog box appears.

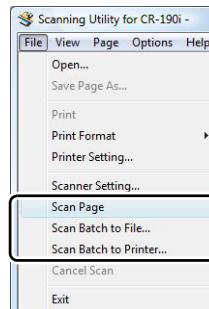
- 5 Set the scan conditions and click [OK].



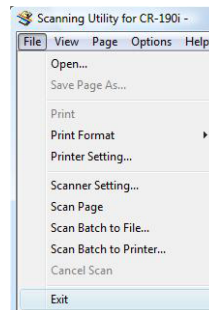
 **NOTE**

For information about the settings for the scan conditions, click [Help] on the Settings dialog box to open the Help file.

- 6 Select the scanning method from the [File] menu and start scanning.



- 7 When scanning is finished, click [Exit] on the [File] menu to quit the Scanning Utility.



## How to Use the Ranger

### About the Ranger

Silver Bullet Technology's Ranger™ Transport API software, allowing it to be easily integrated into existing systems or be mixed and matched with a wide range of leading check processing software.

### Installing the Ranger

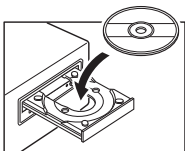
Follow the instructions below to install the Ranger.

- 1 Turn ON your computer, and start Windows.

#### **!** IMPORTANT

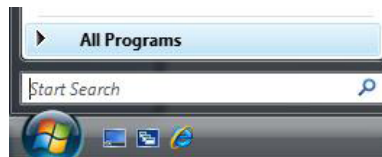
Be sure to log on as the administrator.

- 2 Insert the setup disc into the Disc drive.  
This manual assumes that "D" is assigned to your Disc drive.

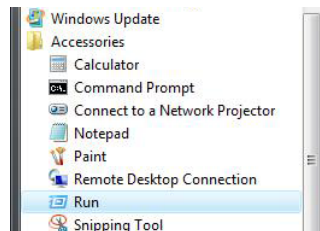


- 3 Click [Start], and then click [All Programs].

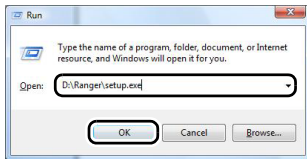
The procedure in Windows 7/8.1/10 is different from the ones described in this manual. Refer to the Windows 7/8.1/10 "Help and Support Center" to select [Run].



- 4 Click [Accessories], and then click [Run].



- 5** Enter “D:\Ranger\setup.exe” in the [Open] field, and then click [OK].



Installation starts.

- 6** Follow the instructions on the screen to complete the installation.

### **!** IMPORTANT

The computer may need to be restarted, after the installation, depending on the operating system. If this is necessary, make sure to restart the computer.

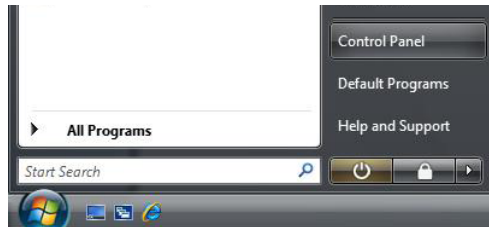
## Uninstalling the Software

This section describes how to uninstall the Scanning Utility and the Ranger.

### **!** IMPORTANT

- Be sure to log on as the Administrator.
- The procedure in Windows 7/8.1/10 is different from the ones described in this manual. Refer to the Windows 7/8.1/10 “Help and Support Center” to uninstall the software.

- 1** Click [Start], and then click [Control Panel].





# Document Feeding and Scanning

This chapter describes precautions regarding documents that can be handled on this scanner and scanning operations.

## Documents

This section describes the types of documents that can be used and how to place them.



### CAUTION

**Treat the documents carefully. The paper edges may cut your fingers.**

## Document

The CR-135i II/CR-190i II can feed a wide variety of document sizes.

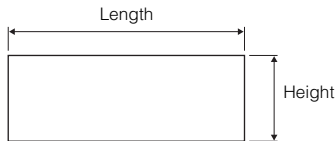
The ranges of height and length for a document are:

Height : 68 to 108 mm (2.7" to 4.3")

Length : 120 to 245 mm (4.7" to 9.6")

Thickness : 0.08 to 0.20 mm (0.003" to 0.008")

Weight : 64 to 157 g/m<sup>2</sup> (17 to 40 lb bond)



Follow these guidelines when you prepare a document for scanning:

- Before scanning documents that contain pasted artwork, make sure that the ink or paste is thoroughly dry. If the documents are scanned with wet ink or paste, the inside of the scanner may become dirty and it may cause a malfunction.
- If you scan a document written in pencil, the letters may not be scanned properly or the pencil may rub off onto the rollers and stain subsequent documents. Before you scan this kind of document, make a copy, and then scan the copy. After scanning a document written in pencil or some other soft writing material, be sure to clean the scanning rollers. (See "Cleaning the Scanning Glass and Rollers," on p. 44.)
- If you scan thin paper in the Duplex mode, the ink printed on the back side may be scanned. If this happens, adjust the scanning density.
- Scanning documents with a rough surface may not feed easily, and may cause friction between the documents, resulting in a feeding error. If this happens, feed the documents one by one.
- To avoid paper jams, damage to documents, and a scanner malfunction, do not feed the following types of paper into the scanner. If you want to scan these types of paper, first make a copy, and then scan the copy.



Wrinkled or creased paper



Curled paper



Torn paper



Paper with clips or staples



Carbon backed paper



Coated paper or fax recording paper



Extremely thin paper



Paper with binding holes

## Envelope

You can also scan the envelope. When using separation OFF mode, you can scan an envelope with thickness up to 0.5 mm (0.02") or weight up to 413 g/m<sup>2</sup> (111 lb bond).



### NOTE

- Disable the double feed detection function. (See "Using Ultrasonic Double Feed Detection," on p. 31.)
- If the envelope is not the first document in the batch, it may cause a feeding error or a paper jam.
- Some type of envelope may cause a feeding error or a paper jam.



### NOTE

- Note that mixing documents of different thickness may cause a malfunction during feeding.
- Curled, wrinkled, or folded documents may cause an error. If this happens, straighten out the curls, or reduce the number of documents loaded.

## Using Ultrasonic Double Feed Detection

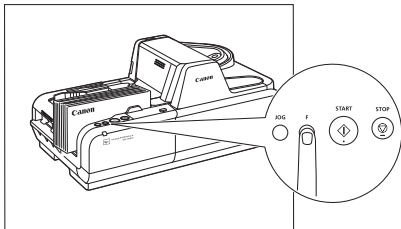
The double feed detection function that the scanner is equipped with uses the penetration of ultrasonic waves to detect when two or more documents are fed at the same time.

If false detections happen too often, disable the double feed detection function.

### NOTE

When Using the Accompanying Scanning Utility for CR-135i/CR-190i:

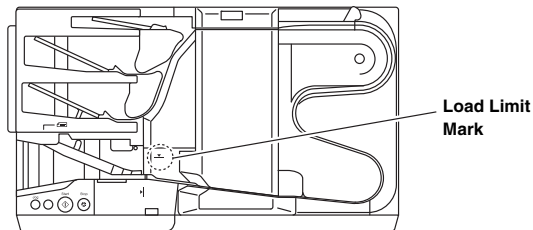
You can disable the double feed detection function to push the Function Button. When the function is disabled, the light of the Function Button is off.



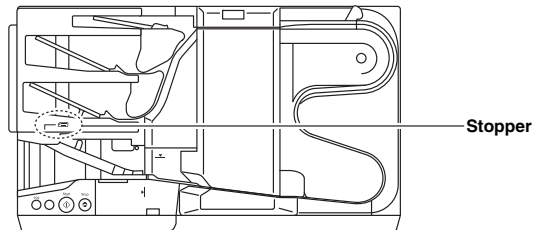
## Placing Documents

Note the following points when placing documents on the scanner.

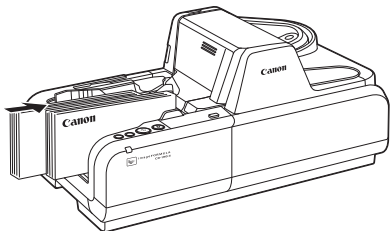
- Place the front of the document toward you.
- Do not exceed the Load Limit Mark when placing documents in the document tray. This may cause feeding errors or paper jams.



- A maximum of 250 documents can be loaded at one time (90 g/m<sup>2</sup> (24 lb bond)). Make sure stacks do not exceed 25 mm in height (including curling).
- Move the stopper to the edge of the document in the document tray in accordance with the document. Otherwise, this may cause a paper eject error.



- Additional documents can be placed while the machine is scanning.



### **!** IMPORTANT

- Align the documents and set the bottom of the documents level in the document tray.
- Do not exceed the Load Limit Mark when placing documents. This may cause double feed error.

## Document Feeding and Scanning

This section describes how to load and scan documents.

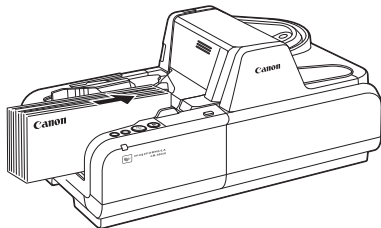
### **!** CAUTION

- Avoid wearing loose fitting clothing, dangling jewelry, long ties, or long hair that could become entangled with moving parts, especially the rollers that feed paper through the scanner. If such objects become entangled, immediately disconnect the power plug from the power outlet.
- Check the paper stack and remove all clips, staples, pins, or any other type of metal or plastic fastener. These objects may cause damage to the document, a paper jam, or a scanner malfunction.
- Do not touch anything except the operation buttons when the jogger is operating (CR-190i II/CR-190i II UV only) or documents are being fed.
- Do not touch documents that are being fed under any circumstances. The documents that are being fed may cut your hand.



## Scan Procedure

- 1 Carefully align the edges of the document.
- 2 Place the first page of the document facing you, and place the leading edge of the document into the scanner.



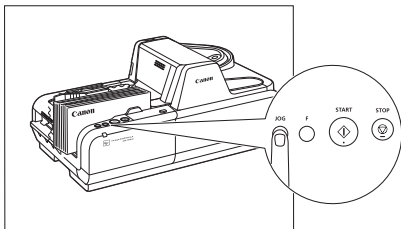
The remaining procedure differs depending on the scanner you are using.

For the CR-135i II/CR-135i II UV: Proceed to step 4

For the CR-190i II/CR-190i II UV: Proceed to step 3

- 3 (CR-190i II/CR-190i II UV only) If the documents are not aligned, press the JOG Button.

The jogger mechanism can be used to align documents.



## ! IMPORTANT

- If you press the JOG Button when a batch of documents of various sizes are loaded, the alignment will be incomplete, and the documents will not be scanned in the order loaded. If you are scanning documents of various sizes, align the leading edges of all the documents with the entry point of feeding.
- The jogger mechanism is not available for documents of less than 150 mm (5.9") in length.

## NOTE

- The jogger does not work when the shutter is open. It occurs on the following conditions:
  - The STOP Button is pressed and the scanning stops.
  - There are documents on the document tray when a paper jam occurs. Remove the documents from the document tray to close the shutter. If the jammed document remains or the Top Cover is removed, the jogger does not work.
- The jogger vibrates for 6 seconds, and then stops. Press the JOG Button to stop the jogger.

- 4 Adjust the Eject Stopper in accordance with the document.

- 5 Instruct scanning to start from the software application.

## NOTE

- When Using the Accompanying Scanning Utility for CR-135i/CR-190i: There are three scanning methods as follows. Follow the each instruction.

### Scan 1 page

Click [Scan Page] from the [File] menu.

### Scan Batch to File

- ① Click [Scan Batch to File] from the [File] menu.
- ② Input the File name, and then click [Save].
- ③ Select Simplex or Duplex, and then click [Start Scanning].

### Scan Batch to Printer

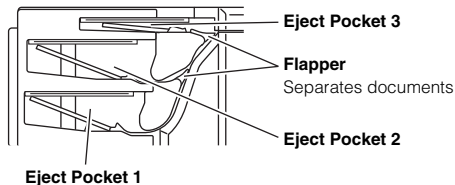
- ① Click [Scan Batch to Printer] from the [File] menu.
- ② Select Simplex or Duplex, and then click [Start Scanning].

• You can also start scanning with pressing the START Button.

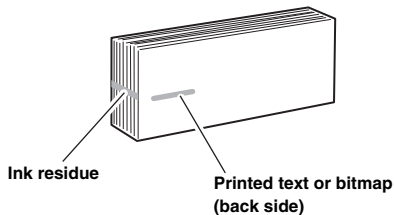
## 6 Scanning starts.

### NOTE

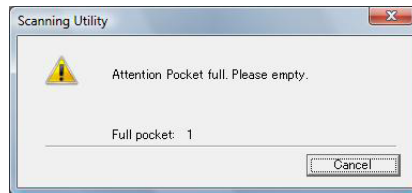
- If "Sort Method" is set in the software application, the document will be ejected to one of the three Eject Pockets according to the sort methods that have been set.



- When printing with the imprinter, ink may get on the leading edge of the document because the documents are ejected onto the printed surface.



- When Using the Accompanying Scanning Utility for CR-135i/CR-190i: Scanning is suspended and a message is displayed when the Eject Pocket becomes full of documents. Scanning resumes when the documents are removed from the Eject Pocket (Eject Pocket full detection). This function is available only on CR-135i II/CR-190i II/CR-190i II UV.



When documents that are 120 to 139 mm in length are ejected into Eject Pocket 3, scanning may resume even if the pocket is not completely empty. Make sure to remove all of the documents at one time when removing such documents from this eject pocket.

### ! IMPORTANT

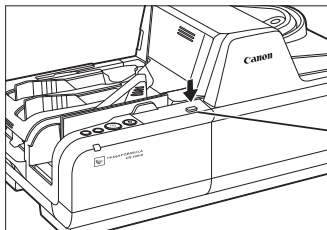
If you configure scanning conditions that consume a large amount of the computer's memory, scanning may stop because of insufficient memory. If an error message appears due to insufficient memory while scanning is in progress, exit the application, change the scanning conditions, and then try scanning again.

## Separation OFF Mode

Use this separation OFF mode when you want to scan the following documents:

- Thick documents
- Documents that contain two or more pages together as one document
- Documents that have a rough surface
- Duplicate forms that have sticky edges

Feed these documents one by one and press the Separation OFF Mode Button.



Separation OFF  
Mode Button

### **!** IMPORTANT

For duplicate forms, load the side with the sticky edges toward the feeding entry point.

## Auto Power OFF Settings

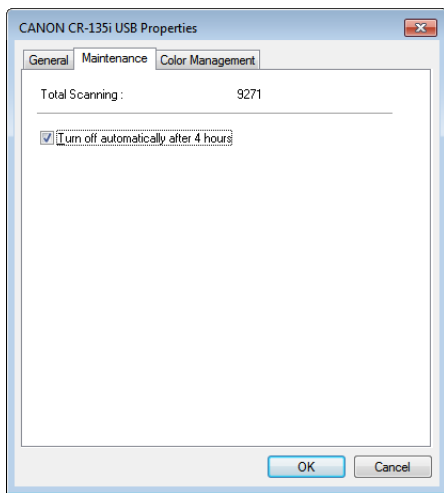
The CR-135i II/CR-190i II includes an Auto Power OFF function. When this function is enabled, the scanner will turn OFF automatically if no operations are performed for 4 hours.

To enable or disable this setting, follow the procedure below.

### NOTE

Depending on your country or region, the Auto Power OFF function may be enabled under factory default conditions.

- 1** Start Windows and log in as a user with administrator privileges.
- 2** Click the Start button, and then click [Control Panel], [Hardware and Sound], and [Devices and Printers].
- 3** Right-click the [CANON CR-135i] or [CANON CR-190i] icon, and then click [Scan Properties] in the context menu.
- 4** If the [User Account Control] dialog box appears, click [Yes] to close the dialog box.  
The [CANON CR-135i (or CR-190i) USB Properties] screen appears.
- 5** Click the [Maintenance] tab, and then select or clear the [Turn off automatically after 4 hours] check box.



**6** Click [OK] to close the scanner properties.

# Troubleshooting

This chapter describes the problems that might occur in the CR-135i II/CR-190i II and how to remedy them.

## When the Scanner Is Not Recognized

The following causes and remedies describe why your computer may not recognize the scanner.

**Cause** The Scanning Utility is not installed.

**Remedy** Install the Scanning Utility before connecting the scanner to the computer. (See "Setting Up the Scanner," on p. 16.)

**Cause** The scanner is not correctly connected to the computer.

**Remedy** Connect the scanner to the computer correctly. (See "Connecting the Scanner to a Computer," on p. 19.)

**Cause** The USB interface provided as standard with your computer is not compatible with the scanner.

**Remedy** Not all USB interfaces provided as standard with personal computers are guaranteed. Contact your local authorized Canon dealer for more detailed information. (See "Checking Your Operating Environment," on p. 17.)

**Cause** USB cable is not compatible with the scanner.

**Remedy** Use the USB cable provided with the scanner. (See "Checking Your Operating Environment," on p. 17.)

**Cause** USB hub is not compatible with the scanner.

**Remedy** Remove the USB hub to use the scanner. (See "Checking Your Operating Environment," on p. 17.)

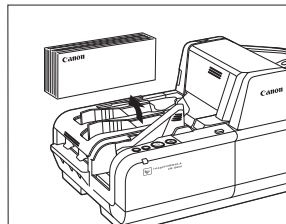
## Clearing Paper Jams

If paper has jammed, open the Maintenance Cover and remove the jammed paper.

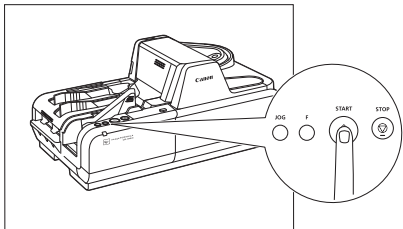
### ! CAUTION

- Be careful when you clear a paper jam. You may be injured unexpectedly. For example, the paper edges may cut your fingers, or the document may be damaged.
- Remove all jammed sheets of paper. Paper scraps left inside the scanner may cause a paper jam or malfunction.

- 1 Remove scanned documents from the Eject Pockets.

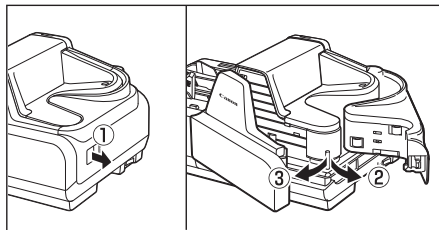


- 2** Press and hold the START Button.  
The jammed document is ejected into the Eject Pocket.

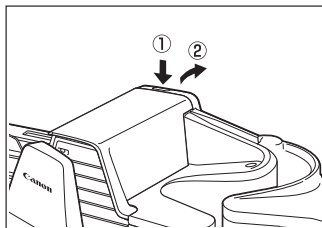


If the above procedure does not clear the paper jam, perform the following to remove the jammed document.

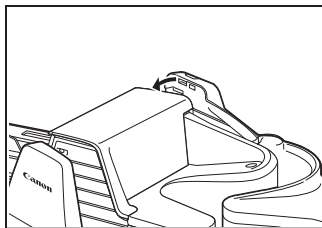
- 3** Pull the Open Button, and pull the Front Maintenance Cover open to the right and left.



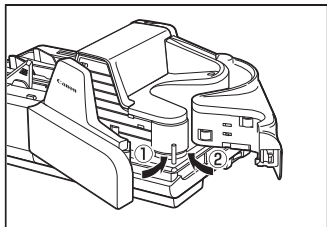
- 4** Press the Open Button, and push the Back Maintenance Cover open to the back.



- 5** Remove the paper that has jammed.  
**6** Close the Back Maintenance Cover.



- 7** Close the Front Maintenance Cover in the order shown in the diagram below.



## Feeding Trouble

If the document is not fed properly or the detection functions do not work properly, remedy the problem by checking the following conditions.

### Condition A paper jam has occurred.

- Cause and Remedy
- Check to make sure that the size and thickness of the document are within the supported range of the scanner, and if the quality of the paper is appropriate. For cautions on handling documents, see "Documents," on p. 29.
  - Documents with rough surfaces may cause a paper feed error to occur.  
Scan one sheet at a time in the separation OFF mode. (See "Separation OFF Mode," on p. 35.)
  - Dirty or worn rollers inside the scanner may cause a paper jam.  
Clean the rollers if they are dirty. (See "Cleaning the Scanning Glass and Rollers," on p. 44.) Worn rollers must be replaced. Some rollers are replaceable. (See "Replacing the Rollers," on p. 53.) If the rollers are not replaceable, contact your local authorized Canon dealer or service representative to have the scanner serviced.
  - The Separation Roller gap is too wide. Adjust the Separation Roller gap. (See "Adjusting the Separation Roller Gap," on p. 56.)

**Condition** **A double feed error often occurs.**

Cause and Remedy A double feed error may occur when documents with different thicknesses are mixed. If you are using the CR-190i II/CR-190i II UV scanner, you can align the documents using the jogger.  
If the above-mentioned method is not effective or you are using the CR-135i II/CR-135i II UV scanner, adjust the Separation Roller gap. (See "Adjusting the Separation Roller Gap," on p. 56.)

**Condition** **MICR characters are not recognized correctly.**

Cause and Remedy

- The scanner cannot correctly read MICR characters if the magnetic heads are dirty. Clean the MICR magnetic heads. (See "Cleaning the Magnetic Heads," on p. 47.)
- If MICR characters cannot be recognized correctly after cleaning the heads, the MICR heads may be worn. Contact your local authorized Canon dealer or service representative to have the scanner serviced.
- The MICR text is on the back of the document. Load the side with the MICR characters face up in the document tray.

Other Causes

- Some of the MICR characters are scratched or missing. Splattered MICR ink or toner may also be the problem.

**Condition** **The imprinter is not printing correctly (missing imprint dots).**

Cause and Remedy Ink is clogged in the ink jet nozzle. Clean the ink jet nozzle. Cleaning the ink jet nozzle is recommended before using the CR-135i II/CR-190i II. (See "Cleaning the Ink Jet Nozzles," on p. 48.)

Other Causes The ink cartridge may be empty.

**Condition** **Documents get dirty when using the imprinter.**

Cause and Remedy Ink from the imprinter has been placed on the feed path. Clean the ink off the feed path. (See "Cleaning the Ink Jet Nozzles," on p. 48 and "Cleaning the Feed Path," on p. 42.)



## When the Scanned Image Is Not Normal

If there is a problem with the scanned image (the image is not sharp or stripes appear), one of the following conditions may be a probable cause. Check the following conditions, and take the appropriate action.

### The scanning glass or rollers are dirty.

If the scanning glass or rollers are dirty, the dirt will appear on the scanned image.

► Clean the scanning glass and rollers. For details, see "Cleaning the Scanning Glass and Rollers," on p. 44.

### The scan conditions are inappropriate.

If the scan conditions are inappropriate, the scanned image will not be sharp or will appear as dark.

► Check the brightness and other scanner settings.

If the scanned image is blurry or the document has not been scanned at all, the brightness may be set too high.

If the scanned image appears dark, the brightness may be set too low.

Also, check the settings on the driver and the software application.

### The driver or application does not run correctly.

If the document cannot be scanned correctly even if the scan conditions are adjusted, the driver or the application may not be functioning correctly.

► Reinstall the driver or application.

For details on how to install the driver, see "Installing the Software," on p. 18.

For details on how to install the application, see the applications instruction manual.

### The CR-135i II/CR-190i II is not recognized by your computer.

Try the following:

- Restart your computer.
- If your computer has multiple USB ports, try using a different USB port.
- Disconnect the USB cable, make sure the computer and scanner are turned ON, and then reconnect the cable.

### Memory becomes insufficient and scanning stops.

If you configure scanning conditions that use a large amount of the computer's memory, scanning may stop because of insufficient memory. Although this depends on the computer's memory size, the possibility of insufficient memory increases if any of the following scanning conditions overlap.

- The page size is set to [Scanner's Maximum].
- A high resolution (300dpi etc.) is specified for [Dots per inch].

If an error message appears due to insufficient memory while scanning is in progress, exit the application, change the scanning conditions (e.g. reduce the resolution or page size) and then try scanning again.

### The CR-135i II/CR-190i II turns OFF automatically.

Check whether the Auto Power OFF function of the CR-135i II/CR-190i II is enabled. If it is enabled, disable it.

### Other Causes

Even if the computer may be recognizing the scanner correctly, and the driver and the application is installed correctly, scanning may not be performed correctly. If this happens, the interface card is not compatible. Use the recommended interface card.

If the above remedies do not rectify the problem, contact your local authorized Canon dealer or service representative to have the scanner serviced.

# Maintenance

This chapter describes how to clean and maintain the scanner.

## Daily Cleaning

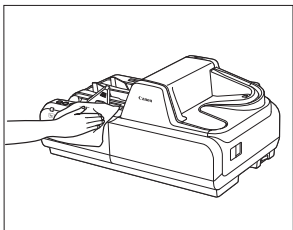
To ensure high-quality image scanning, regularly clean your CR-135i II/CR-190i II as described below.

### CAUTION

- Before you clean the scanner, turn OFF the scanner and computer, and disconnect the power cord from the power outlet. Otherwise, it may cause an electrical shock.
- Never clean the scanner with any kind of organic solvent, such as alcohol, benzene, or paint thinner. This may cause a fire and electrical shock, or cause the exterior of the scanner to disfigure or discolor.
- Never spray mild detergent or water directly on the scanning glass. The spray could penetrate below the glass and contaminate the internal light source and lenses.

## Cleaning the Main Unit

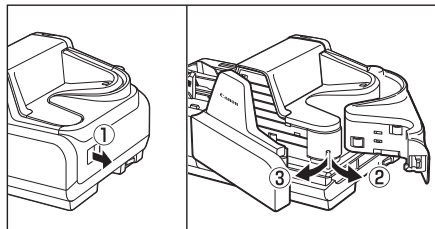
Wipe the scanner with a firmly wrung cloth, moistened slightly with water or mild detergent. Then, wipe off with a clean, dry cloth.



## Cleaning the Feed Path

If dirt appears on scanned documents, clean the feed path. Clean the feed path regularly.

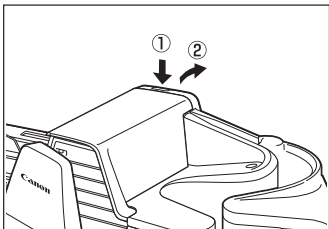
- 1 Pull the Open Button, and pull the Front Maintenance Cover open to the right and left.



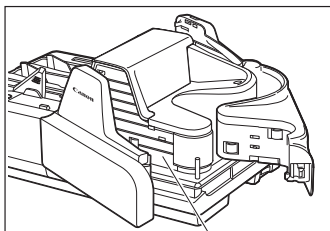
### IMPORTANT

If you notice paper dust in the feed path when you open the Maintenance Cover, clean it out with a clean dry cloth or cotton swabs.

- 2** Press the Open Button, and push the Back Maintenance Cover open to the back.

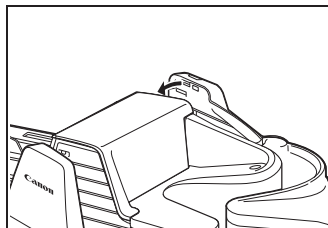


- 3** Wipe the feed path with a firmly wrung cloth, moistened slightly with water or mild detergent. Then, wipe off with a clean, dry cloth.

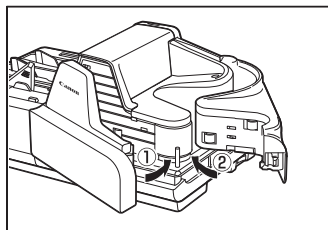


**Feed Path**

- 4** Close the Back Maintenance Cover.



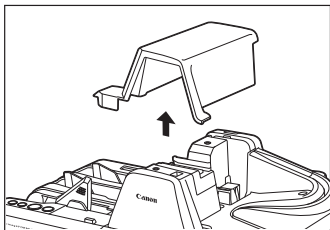
- 5** Close the Front Maintenance Cover in the order shown in the diagram below.



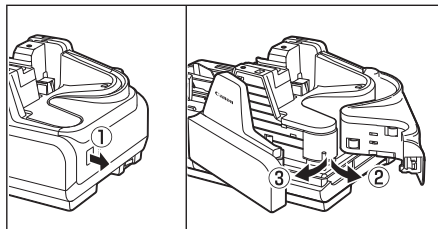
## Cleaning the Scanning Glass and Rollers

If stripes appear on scanned images or if dirt appears on scanned documents, clean the scanning glass and rollers. Clean the scanning glass and rollers regularly.

- 1 Remove the Top Cover.



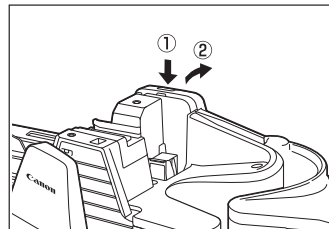
- 2 Pull the Open Button, and pull the Front Maintenance Cover open to the right and left.



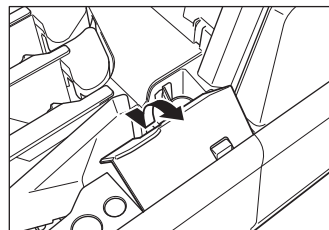
### ! IMPORTANT

If you notice paper dust in the feed path when you open the Maintenance Cover, clean it out with a clean dry cloth or cotton swabs.

- 3 Press the Open Button, and push the Back Maintenance Cover open to the back.

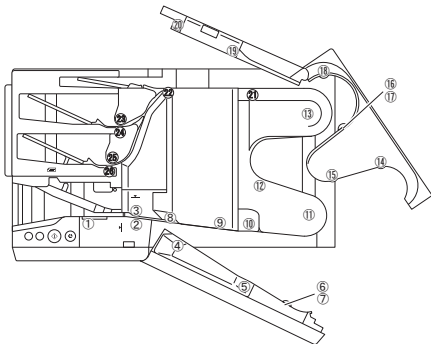


- 4 Remove the Roller Cover.



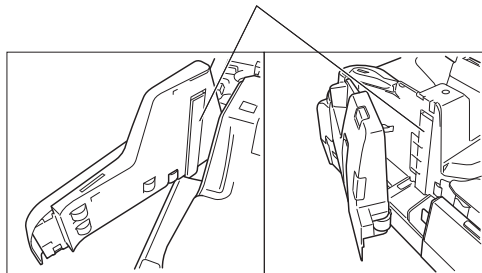
- 5** Spin the rollers while wiping them clean with a firmly wrung cloth dampened with water or a mild detergent.

There are 26 roller positions, as shown in the diagram below.

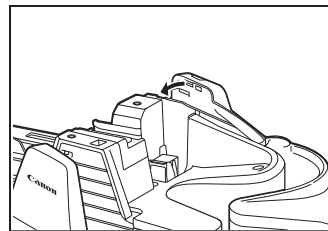


- 6** Use a clean dry cloth to clean the entire scanning glass.

Scanning Glass



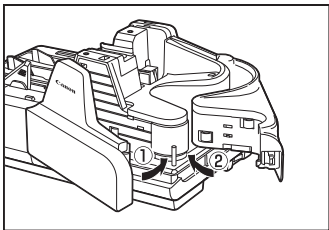
- 7** Close the Back Maintenance Cover.



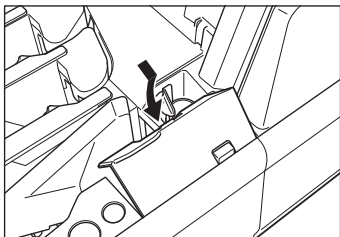
**NOTE**

- Use cotton swabs to clean the rollers in locations that are too narrow for your fingers.
- Roller in position ③ is turned by the roller in position ①. Turn the roller in position ① to wipe the rollers.
- Rollers in positions ⑧, ⑩, and ⑫ are turned by the roller in position ⑪. Turn the roller in position ⑪ to wipe the rollers.
- Rollers in positions ⑳ to ㉔ are turned by the roller in position ⑬. Turn the roller in position ⑬ to wipe the rollers.
- Rollers in positions ① to ③ are replaceable. (See “Replacing the Rollers,” on p. 53.)

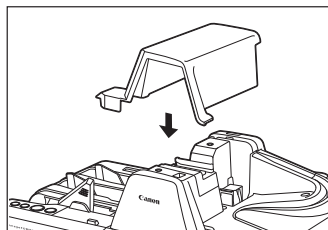
- 8** Close the Front Maintenance Cover in the order shown in the diagram below.



- 9** Replace the Roller Cover.



- 10** Carefully replace the Top Cover.



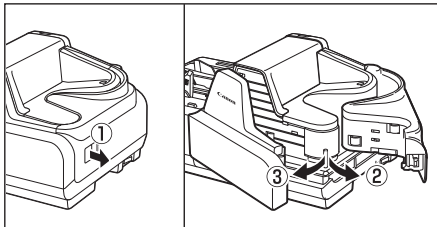
**! IMPORTANT**

If paper jams and double feeds (two papers being fed at the same time) still occur after cleaning the rollers, the rollers may be worn. The rollers need to be changed. Some rollers are replaceable. (See "Replacing the Rollers," on p. 53.) If the rollers are not replaceable, contact your local authorized Canon dealer or service representative to have the scanner serviced.

## Cleaning the Magnetic Heads

If the magnetic heads are dirty, then MICR characters cannot be scanned correctly. Periodically, clean the magnetic heads with a commercially available audio head cleaner.

- 1** Pull the Open Button, and pull the Front Maintenance Cover open to the right and left.

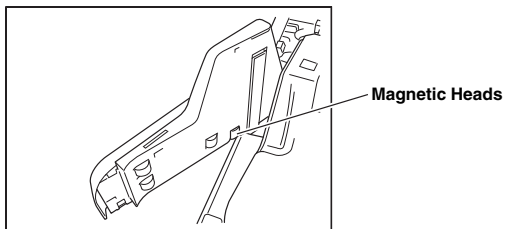


### **!** IMPORTANT

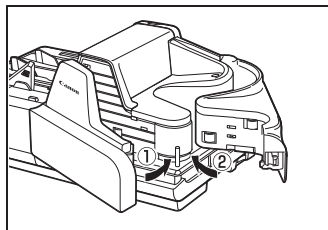
If you notice paper dust in the feed path when you open the Maintenance Cover, clean it out with a clean dry cloth or cotton swabs.

- 2** Use a commercially available audio head cleaner to clean the magnetic heads.

The magnetic heads are located in the positions shown in the diagram below.



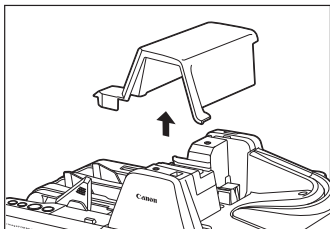
- 3** Close the Front Maintenance Cover in the order shown in the diagram below.



## Cleaning the Ink Jet Nozzles

Ink that collects around the ink jet nozzles may stain your documents or cause the text or bitmap to appear as scratched. Clean the area around the ink jet nozzles periodically. Cleaning the ink jet nozzles is also efficient action when the printed text or bitmap becomes faint.

- 1** Remove the Top Cover.

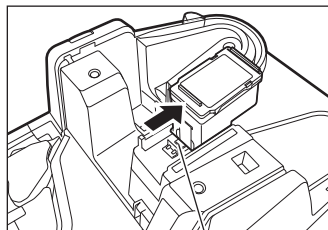


- 2** Remove the ink cartridge.

For more information, see "Replacing the Ink Cartridge," on p. 50.

- 3** Use the Built-in Nozzle Cleaning Pad to remove the ink from around the ink jet nozzles.

Swipe the ink cartridge 2 or 3 times on the Built-in Nozzle Cleaning Pad shown in the diagram below. If the text or bitmap still appear faint after this operation, replace the ink cartridge (See "Replacing the Ink Cartridge," on p. 50.)

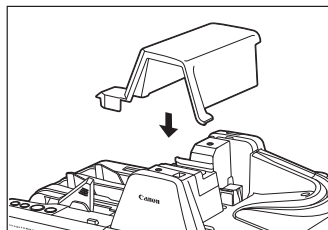


**Built-in Nozzle Cleaning Pad**

- 4** Set the ink cartridge.

For more information, see "Setting the Ink Cartridge and Adjusting the Print Position," on p. 22.

- 5** Carefully replace the Top Cover.





## Cleaning with the Cleaning Cards (United States Only)

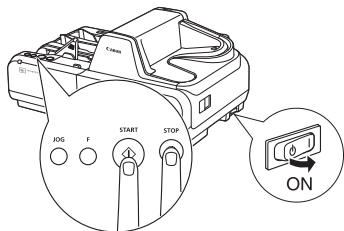
If a black stripe appears on the back-side of scanned images or if dirt appears on the paper documents upon scanning or for preventative measures, we recommend that you clean your Canon CR-Series scanner as needed with a cleaning card. Using a cleaning card will minimize the frequent cleaning as instructed in this manual.

It is best to perform a cleaning at beginning or end of the day. A cleaning card does not clean the ink jet nozzles, so please remove the ink cartridge and perform a nozzle cleaning (See "Cleaning the Ink Jet Nozzles," on p. 48.)

### ! IMPORTANT

- This operation is for the Cleaning cards in the United States are available only in the United States.
- Contact your local authorized Canon dealer or service representative for the available cleaning card.

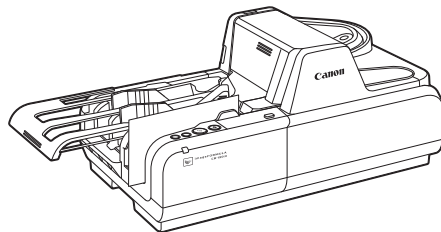
- 1** Turn OFF the scanner.
- 2** Disconnect the scanner and the computer.
- 3** Turn ON the scanner with pressing the START Button and the STOP Button.



### NOTE

If the scanner turned ON properly, the power LED continues to flash.

- 4** Press the Function Button to turn its LED off.
- 5** Pull the Eject Stopper.
- 6** Place the cleaning card in the document tray.



- 7** Press the START Button to start cleaning.
- 8** Please repeat steps 6 and 7.  
A typical cleaning is feeding the cleaning card 3 to 7 times. If the scanner is extremely dirty, you may need to use another cleaning card.
- 9** Turn OFF the scanner.
- 10** Connect the scanner and the computer.

### NOTE

Allow 1 to 2 minutes for the moisture on the Canon CR-Series scanner from the cleaning card to thoroughly dry before scanning documents.

## Maintenance

Make the following adjustments to maintain scanning quality.

### Replacing the Ink Cartridge

The ink cartridge needs to be replaced if the printed text becomes scratchy or faint even if you have cleaned the ink jet nozzle. Replace the ink cartridge according to the following procedure below.

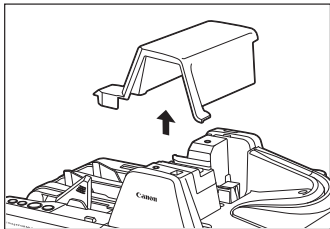
#### ! IMPORTANT

- The ink disposal tank must be replaced when the ink cartridge is replaced.
- To replace the ink cartridge, turn the scanner OFF before removing the Top Cover. After the ink cartridge is set, replace the Top Cover, and then turn the scanner back ON.
- Finish up the unpacked ink cartridge as soon as possible. More frequent cleaning of the ink cartridge is required if long time elapses after unpacking.

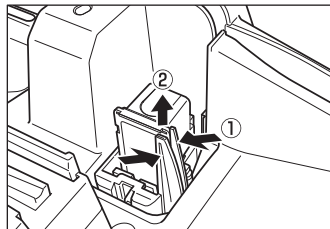
#### NOTE

- Use a Canon ink cartridge. (See "About the Ink Cartridge," on p. 22.)
- Do not use more than one cartridge by rotation. If you do so, applications cannot check the ink level precisely.

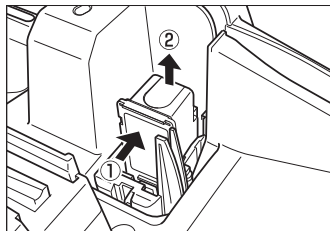
- 1 Remove the Top Cover.



- 2 Squeeze the Print Position Adjustment Lever, and lift it up to the top position.



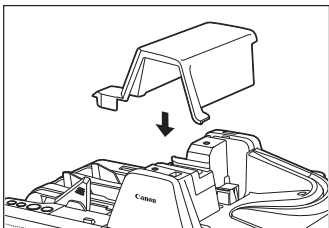
- 3 Push the ink cartridge backward, and then remove the ink cartridge.



#### ! CAUTION

Do not touch the ink jet nozzle right after imprinting. The nozzle may be very hot.

- 4** Set the ink cartridge.  
For more information, see "Setting the Ink Cartridge and Adjusting the Print Position," on p. 22.
- 5** Carefully replace the Top Cover.



## Replacing the Ink Disposal Tank

When the following conditions appear, you have to replace the ink disposal tank according to the following procedure.

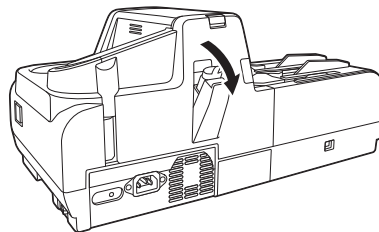
- **When the ink cartridge is replaced.**
- **When clumpy ink appears on the ink disposal tank as shown below.**



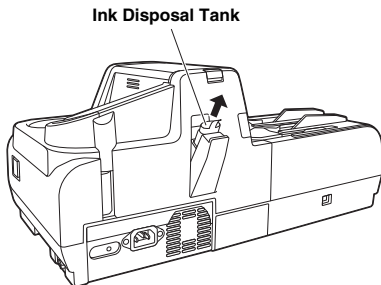
The replacement ink disposal tank is not included with the scanner. Purchase an ink disposal tank, as shown below.

Compatible ink disposal tank: 4623B002

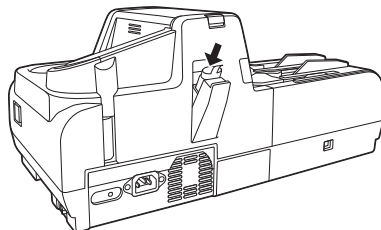
- 1** Open the Ink Disposal Tank Pocket.



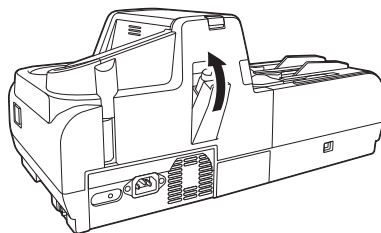
- 2** Remove the ink disposal tank.



- 3** Attach the ink disposal tank.



- 4** Close the Ink Disposal Tank Pocket.



**! WARNING**

Do not print without the ink disposal tank. Doing so may cause a malfunction.

**NOTE**

- Be careful not to get dirty with ink.
- When you discard the ink disposal tank, put it in the plastic bag in the box of the ink disposal tank.

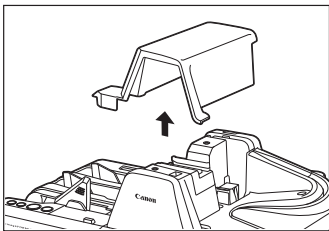
## Replacing the Rollers

When rollers are worn, paper jams and double feeds tend to occur. You can replace the rollers (Pickup Roller, Feed Roller, and Separation Roller) according to the following procedure.

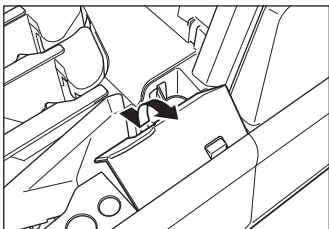
The exchange roller kit is not included with the scanner. Purchase an exchange roller kit separately, as shown below.

Compatible exchange roller kit: 4623B001

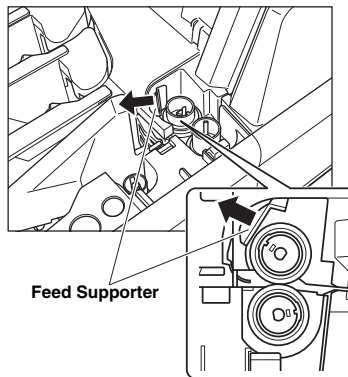
- 1** Remove the Top Cover.



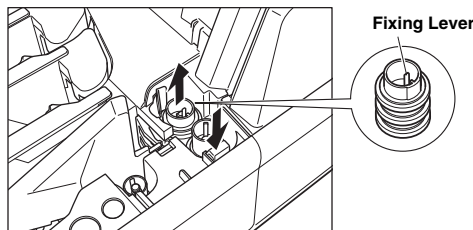
- 2** Remove the Roller Cover.



- 3** Open the Feed Supporter to the left.

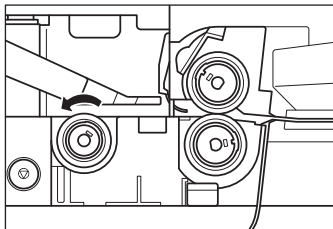


- 4** Pinch the Separation Roller at the rim and the fixing lever, and then remove it with pressing the Separation OFF Mode Button.

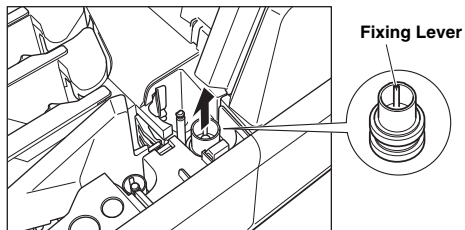


 **NOTE**

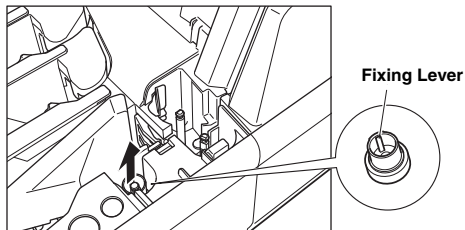
If the Separation Roller is not removed easily because of the fixing lever position, turn the Pickup Roller in anticlockwise direction by hand.



- 5** Pinch the Feed Roller at the rim and the fixing lever, and then remove it.



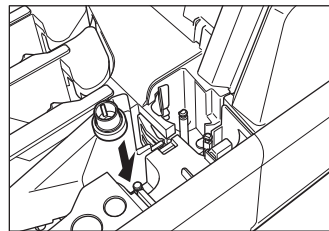
- 6** Pinch the Pickup Roller at the rim and the fixing lever, and then remove it.



 **NOTE**

If the Pickup Roller is not removed easily because of the fixing lever position, turn the Pickup Roller by hand.

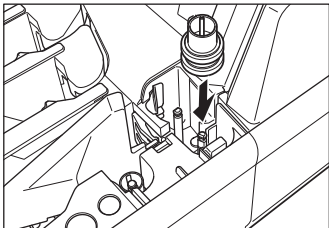
- 7** Attach the Pickup Roller.



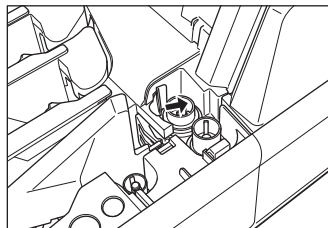
 **IMPORTANT**

Push down the roller until it clicks into place.

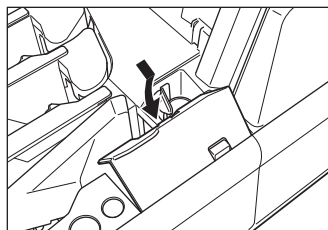
- 8** Attach the Feed Roller. Align the notch on the roller axis with the hole on the roller.



- 10** Close the Feed Supporter to the right.



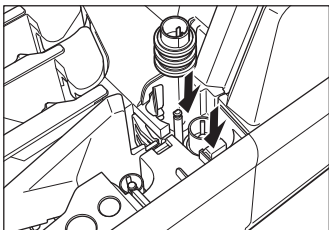
- 11** Replace the Roller Cover.



**!** **IMPORTANT**

Push down the roller until it clicks into place.

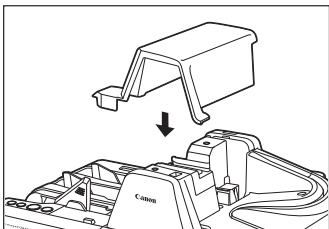
- 9** Attach the Separation Roller with pushing the Separation OFF Mode Button. Align the notch on the roller axis with the hole on the roller.



**!** **IMPORTANT**

Push down the roller until it clicks into place.

- 12** Carefully replace the Top Cover.

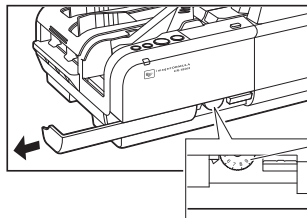


- 13** Adjust the Adjustment Dial to 5.  
For more information, see “Adjusting the Separation Roller Gap,” on p. 56.

## Adjusting the Separation Roller Gap

If double feed should occur too often, adjust the Separation Roller gap according to the following procedure.

- 1** Slide the Adjustment Dial Cover to the left.



### Adjustment Dial

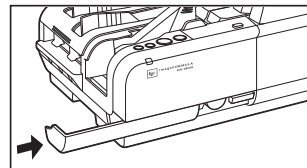
Turn the dial to the left to widen the gap, and turn it to the right to narrow the gap.

- 2** Adjust the Adjustment Dial.

Turn the Adjustment Dial to the right 3 clicks.

If documents are not fed after the above operation, turn the Adjustment Dial back to the left 1 click.

- 3** Slide the Adjustment Dial Cover to the right.



### **!** CAUTION

Do not use the Adjustment Dial any other time except when adjusting the Separation Roller gap. Turning the Adjustment Dial too much may damage the scanner.



## Specifications

### Scanner Specifications

Type	Desktop sheet feed
Document size	Height: 68 to 108 mm (2.7" to 4.3") Length: 120 to 245 mm (4.7" to 9.6") Thickness: 0.08 to 0.20 mm (0.003" to 0.008") Weight: 64 to 157 g/m <sup>2</sup> (17 to 40 lb bond)
Document feeding	Automatic / Not separate
Scanning method	Contact image sensor (CMOS)
Light source	LED (CR-135i II UV/CR-190i II UV: UV LED)
Scanning side	Simplex/Duplex
Scanning mode	Black-and-white, Fine text filtering, Error diffusion, 256 level grayscale, 16 level grayscale, UV Scan
Scanning resolution (primary scan lines x secondary scan lines)	100 x 100 dpi, 120 x 120 dpi, 150 x 150 dpi, 200 x 200 dpi, 240 x 240 dpi, and 300 x 300 dpi (UV Scan mode can scan at up to 200 x 200 dpi)
Scanning speed (200 dpi American checks)	CR-135i II: 135 cpm CR-190i II: 190 cpm CR-135i II UV: 120 cpm (UV Scan mode) CR-190i II UV: 160 cpm (UV Scan mode)
Automatic feeder capacity	Load limit of less than 25 mm (1.0") (within the load limit mark)
Automatic document feed capacity	Up to 250 sheets (90 g/m <sup>2</sup> (24 lb bond)) Make sure stacks do not exceed 25 mm in height (including curling).

Interface	Hi-Speed USB 2.0
Other functions	Automatic paper size detection, Ultrasonic double feed detection, Dropout color, Deskew
Dimensions	214 mm (H) x 476 mm (W) x 272 mm (D) (8.4" (H) x 18.7" (W) x 10.7" (D))
Weight	CR-135i II: Approximately 8.0 kg (17.1 lb) CR-190i II: Approximately 8.4 kg (18.5 lb)
Power requirement	AC 120V (60 Hz) or AC 220-240V (50/60 Hz)
Power consumption	

		Scanning	Sleep mode
CR-135i II/CR-135i II UV	120V 220-240V	43W or less	2.7W or less
CR-190i II/CR-190i II UV	120V 220-240V	49W or less	2.7W or less

Noise	Less than 72 dB
Operating environment	Temperature: 10°C to 32.5°C (50°F to 90.5°F) Humidity: 20% to 80% RH

- Use the recommended operating environment for the ink cartridge when using the imprinter.
- You can use the functions noted above if your software supports them.
- These functions may not work depending on your computer's capabilities and the software you are using.

Specifications are subject to change without notice.

# Index

## A

Adjusting the Print Position .....	22
Adjustment Dial .....	14, 56
Adjustment Dial Cover .....	14
Air Vent .....	15
Amount loaded .....	31

## B

Back Maintenance Cover .....	14
Built-in Nozzle Cleaning Pad .....	13, 48

## C

Cleaning	
Feed path .....	42
Main unit .....	42
Cleaning Card .....	49
Connector .....	15

## D

Daily Cleaning .....	42
Documents .....	29
Document .....	29
Envelope .....	30
How to place documents .....	31
Double Feed Detection .....	31

## E

Eject Pocket .....	14, 34
Eject Stopper .....	14, 31
Exterior Dimensions .....	15

## F

Features of the CR-135i II/CR-190i II .....	11
Feeding Trouble .....	39
Flapper .....	34
Front Maintenance Cover .....	13
Function Button .....	13

## H

Handling .....	8
----------------	---

## I

Ink Cartridge .....	13, 22, 50
Ink Disposal Tank .....	52
Ink Disposal Tank Pocket .....	15, 51
Ink Jet Nozzle .....	48
Installation Location .....	9

## J

JOG Button .....	13, 33
------------------	--------

## L

Load Limit Mark .....	31
-----------------------	----

## M

Magnetic head .....	47
Magnetic Head for MICR .....	13
Maintenance .....	50
Moving the Scanner .....	10

## N

Number of pages loaded .....	31
------------------------------	----

## O

Operating Environment .....	17
Operation Buttons .....	13

## P

Power Cord .....	12, 20
Power Cord Connector .....	15
Power Supply .....	10
Power Switch .....	13
Print Position Adjustment Lever .....	22, 50

## R

Ranger .....	26
Recognizing the scanner .....	21
Roller Cover .....	13
Rollers .....	44, 53

## S

Scanner Unit .....	13, 14
Scanning Glass .....	44
Scanning Utility .....	18, 24
Separates documents .....	34
Separation OFF Mode .....	35
Separation OFF Mode Button .....	14, 35
Setup Disc .....	12
Software	
How to Use the Software .....	24
Install .....	18, 26
Uninstall .....	27
Specifications .....	57

## T

Top Cover .....	14
Troubleshooting .....	37
Turning OFF the Power .....	21
Turning ON the Power .....	20

## U

Unpacking the scanner .....	12
USB Connections .....	19, 37
USB Connector .....	15
UV scanning .....	11

## Safety-related markings on the machine

### Marquages de sécurité sur la machine

### Marchatura di sicurezza sulla macchina

### Sicherheitshinweise auf der Maschine

### Marcas de la máquina relacionadas con la seguridad

### Veiligheidsmarkeringen op de machine

### Makine üzerindeki güvenlik işaretleri



[English]	Switch (On)	Power on
[Français]	Commutateur (Marche)	Sous tension
[Italiano]	Interruttore (On)	Alimentazione presente
[Deutsch]	Schalter (Ein)	Eingeschaltet
[Español]	Interruptor (encendido)	Máquina encendida
[Nederlands]	Schakelaar (On)	Aan
[Türkçe]	Anahtar (Açık)	Güç açık



[English]	Switch (Off)	Power off (no standby current)
[Français]	Commutateur (Arrêt)	Hors tension (pas de courant de veille)
[Italiano]	Interruttore (Off)	Alimentazione assente (nessuna corrente di standby)
[Deutsch]	Schalter (Aus)	Ausgeschaltet (ohne Ruhestromaufnahme)
[Español]	Interruptor (apagado)	Máquina apagada (sin corriente en espera)
[Nederlands]	Schakelaar (Off)	Uit (geen stand-byverbruik)
[Türkçe]	Anahtar (Kapalı)	Güç kapalı (bekleme akımı yok)



[English]	Switch (Standby)	Power on/off (standby current on)
[Français]	Commutateur (Veille)	Sous/hors tension (courant de veille activé)
[Italiano]	Interruttore (Standby)	Alimentazione on/off (corrente di standby presente)
[Deutsch]	Schalter (Standby)	Ein- und Ausschalten (mit Ruhestromaufnahme)
[Español]	Interruptor (en espera)	Máquina apagada/encendida (con corriente en espera)
[Nederlands]	Schakelaar (Standby)	Aan-uit (stand-byverbruik aan)
[Türkçe]	Anahtar (Bekleme)	Güç açık/kapalı (bekleme akımı açık)



[English]	Switch (Push-On/Push-Off)	Power on/off (no standby current)
[Français]	Commutateur (Appuyer pour mettre en marche/Appuyer pour arrêter)	Sous/hors tension (pas de courant de veille)
[Italiano]	Interruttore a pulsante bistabile (On/Off)	Alimentazione on/off (nessuna corrente di standby)
[Deutsch]	Schalter (Ein- und Ausschalten durch Drücken)	Ein- und Ausschalten (ohne Ruhestromaufnahme)
[Español]	Interruptor (pulsado para encendido/apagado)	Encendido/apagado (sin corriente en espera)
[Nederlands]	Schakelaar (Push-On/Push-Off)	Aan-uit (geen stand-byverbruik)
[Türkçe]	Anahtar (Bas-Aç/Bas-Kapa)	Güç açık/kapalı (bekleme akımı yok)



[English]	Heat hazard	Heat hazard
[Français]	Danger de chaleur	Danger de chaleur
[Italiano]	Pericolo: temperature elevate	Pericolo: temperature elevate
[Deutsch]	Überhitzungsgefahr	Überhitzungsgefahr
[Español]	Peligro de calentamiento	Peligro de calentamiento
[Nederlands]	Verbrandingsgevaar	Verbrandingsgevaar
[Türkçe]	Isı tehlikesi	Isı tehlikesi



[English]	Class II equipment	Indicates this is Class II equipment
[Français]	Équipement de classe II	Indique qu'il s'agit d'un équipement de classe II
[Italiano]	Apparecchio classe II	Indica che questo è un apparecchio di classe II
[Deutsch]	Gerät der Schutzklasse II	Gibt an, dass das Gerät der Schutzklasse II entspricht
[Español]	Equipo de clase II	Indica que se trata de un equipo de clase II
[Nederlands]	Klassell-apparatuur	Geeft aan dat deze apparatuur in Klasse II hoort
[Türkçe]	Sınıf II ekipman	Bunun Sınıf II ekipman olduğunu gösterir



[English]	DC symbol	Indicates direct current
[Français]	Symbole CC	Indique qu'il s'agit de courant continu
[Italiano]	Simbolo corrente continua (C.C.)	Indica la corrente continua
[Deutsch]	Gleichstrom-Symbol	Kennzeichnet Gleichstrom
[Español]	Símbolo CC	Indica corriente continua
[Nederlands]	DC-pictogram	Geeft gelijkstroom aan
[Türkçe]	DC sembolü	Düz akımı gösterir



[English]	DC polarity	Indicates the power plug polarity
[Français]	Polarité CC	Indique la polarité de la fiche d'alimentation
[Italiano]	Polarità C.C.	Indica la polarità dello spinotto di alimentazione
[Deutsch]	Gleichstrompolarität	Gibt die Polarität des Netzsteckers an
[Español]	Polaridad de CC	Indica la polaridad del conector de alimentación
[Nederlands]	DC-polariteit	Geeft de polariteit van de stekker aan
[Türkçe]	DC polaritesi	Fiş polaritesini gösterir



[English]	Electrostatic precaution	Avoid applying static electricity to the machine
[Français]	Précaution électrostatique	Évitez de soumettre cette machine à de l'électricité statique
[Italiano]	Protezione dalle cariche elettrostatiche	Evitare di applicare cariche elettrostatiche alla macchina
[Deutsch]	Warnung vor elektrostatischer Aufladung	Elektrostatische Aufladung der Maschine vermeiden
[Español]	Precaución electroestática	No aplique electricidad electroestática
[Nederlands]	Elektrostatische voorzorgen	Voorkom statische elektriciteit op de machine
[Türkçe]	Elektrostatik önlemi	Makineye statik elektrik vermeyin



**CANON ELECTRONICS INC.**

3-5-10 SHIBAKOEN, MINATO-KU, TOKYO 105-0011, JAPAN

**CANON U.S.A. INC.**

ONE CANON PARK, MELVILLE, NY 11747, U.S.A.

**CANON CANADA INC.**

6390 DIXIE ROAD, MISSISSAUGA, ONTARIO L5T 1P7, CANADA

**CANON EUROPA N.V.**

BOVENKERKERWEG 59, 1185 XB AMSTELVEEN, THE NETHERLANDS

**CANON AUSTRALIA PTY. LTD.**

1 THOMAS HOLT DRIVE, NORTH RYDE, SYDNEY. N.S.W, 2113. AUSTRALIA

**CANON SINGAPORE PTE. LTD.**

1 FUSIONOPOLIS PLACE, #15-10, GALAXIS, SINGAPORE 138522

**CANON HONGKONG COMPANY LTD.**

19TH FLOOR, THE METROPOLIS TOWER, 10 METROPOLIS DRIVE, HUNGHOM, KOWLOON, HONG KONG.

**CANON INDIA PVT. LTD**

7TH FLOOR, TOWER B DLF CYBER TERRACES DLF PHASE III GURGAON-122002 HARYANA, INDIA