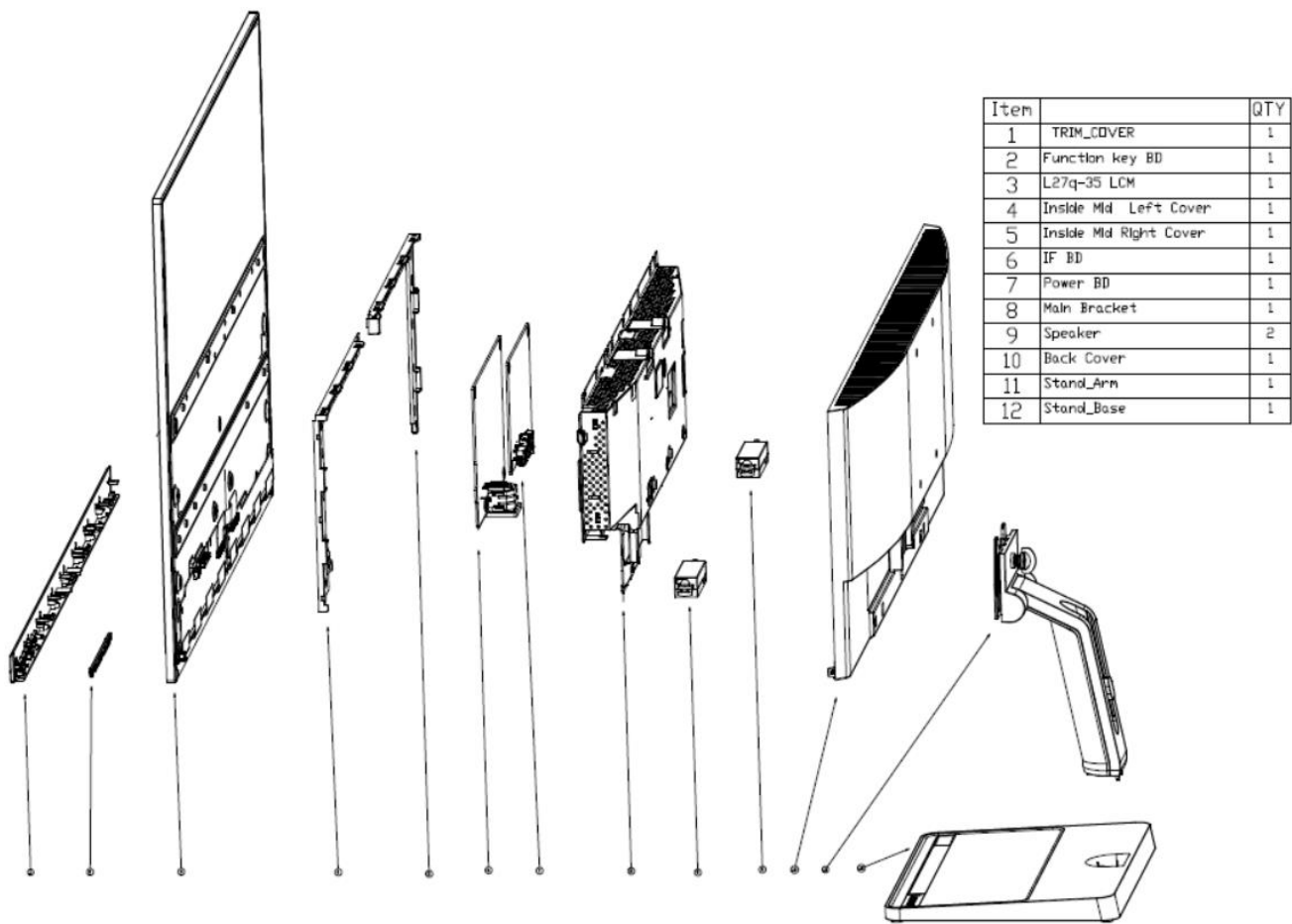


L27q-35 Simplified service manual for dismantling

Model Name: Lenovo L27q-35

Exploded Diagram



1. Precaution

Please read the precaution as follows to prevent any damages to the LCD Monitor.

Make sure all power connector is removed. Be sure that the LCD Monitor is in power off status.

Prepare soft cloth and sponge as working platform to place LCD monitor horizontally.






Hold LCD by the side carefully and DON'T touch or press panel directly.



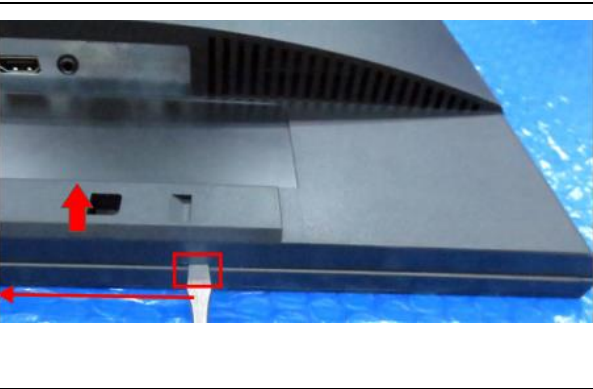



2. Appropriate tools

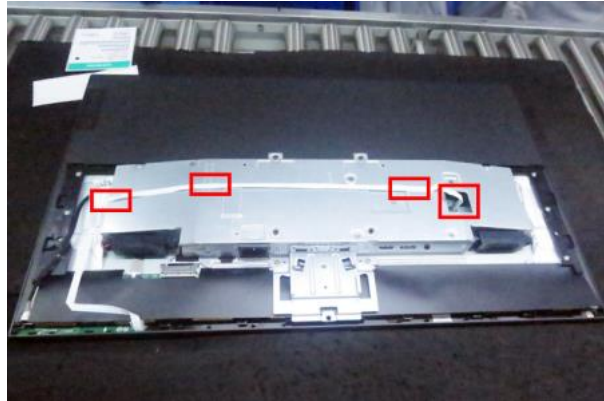
Select the Appropriate tools for disassembly and re-assembly.

Phillips screwdriver (#2)	
C/D disassembly tool	
Gloves or soft cloth	

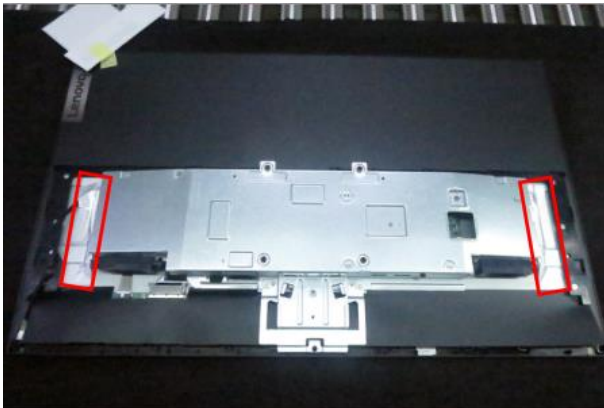
3. Disassembly SOP

<p>Put the monitor on a flat surface (Put the EPE on under the monitor)</p>	 A photograph showing the back of a black monitor resting on a white surface. The monitor's stand is visible, and a small white label is attached to the back panel.
<p>Release the detached screw, then pull out the stand base Tool : Screwdriver #2</p>	 A photograph of the monitor's back with a red circle highlighting a screw on the stand base. A red arrow points downwards from the circle, indicating the direction to pull the stand base out.
<p>Use the C/D disassembly tool to release Rear cover hook from disassemble hole on bottom</p>	 A close-up photograph of the bottom edge of the monitor's rear cover. A red arrow points upwards towards a small hook. Another red arrow points to a small rectangular hole, with a red box highlighting it. A red line indicates the path of the disassembly tool.
<p>Remove the rear cover</p>	 A photograph of the monitor's back with the rear cover removed. Red arrows point outwards from the edges of the cover, indicating the direction to pull it away from the monitor.

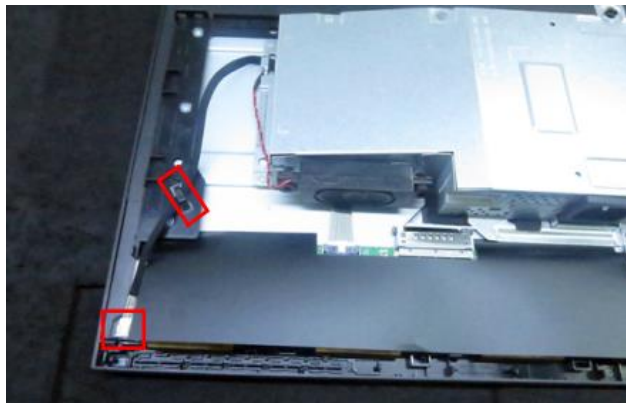
Unplug the keypad cable, then
release the keypad PCB from the
middle frame



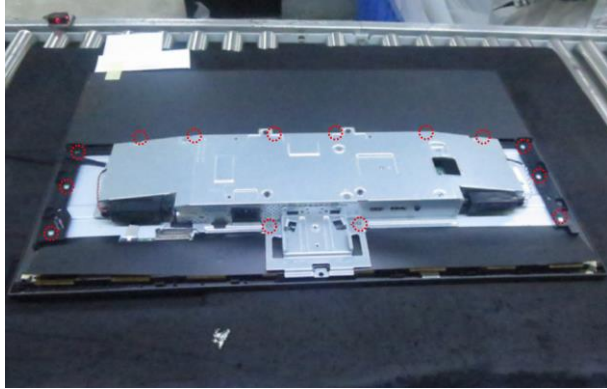
Remove All tape and foil



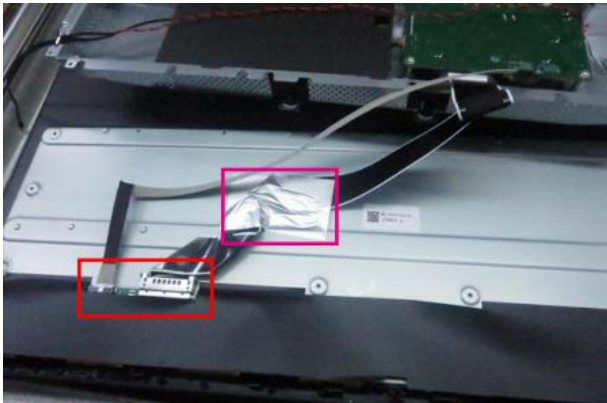
Unplug light bar wire



Remove all screw: 12+2 pcs
Remove middle frame from panel
Tool : Screwdriver #2



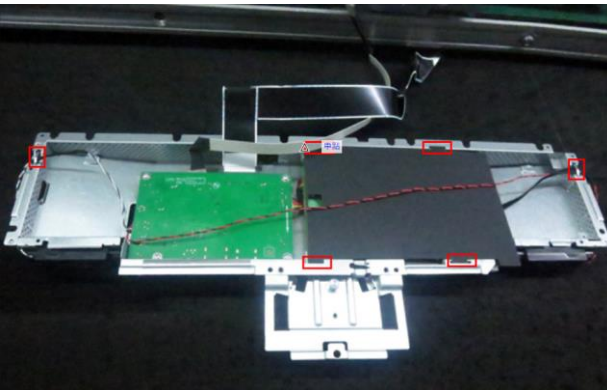
Unplug light two LVDS wire, tear off AL



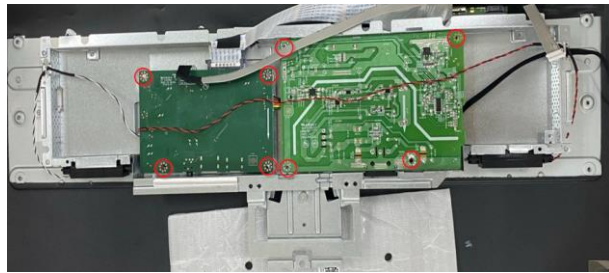
Release main bracket from panel



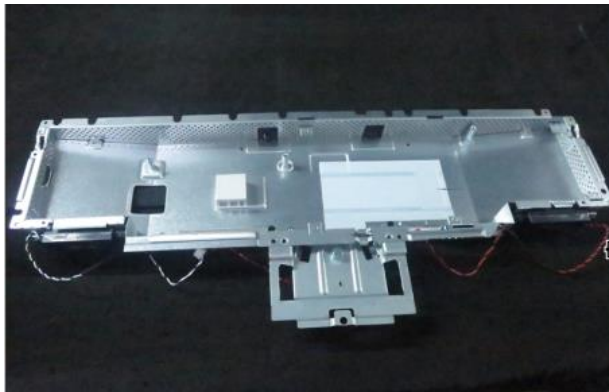
Release the speaker's cable from the hooks, then take out the mylar sheet from Main chassis



Remove 8pcs screw.
Tool : Screwdriver #2



Take out PCB and Peel off all mylar



Unplug two speakers from the
probers of main chassis



Take out the Thermal pads from
Power PCB

