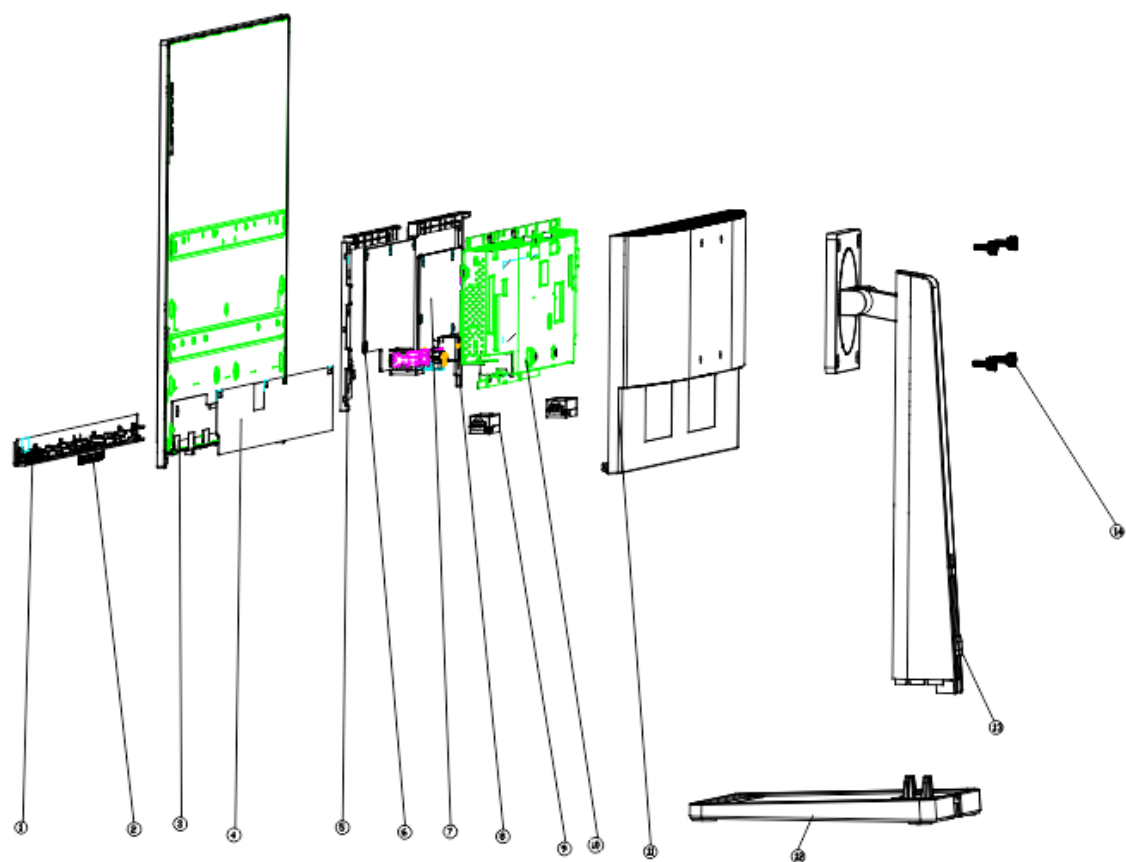


L27m-30 Simplified service manual for dismantling

Model Name: Lenovo L27m-30

Exploded Diagram



ITEM	PART NO.	PART NAME	Q'ty	Remark
1	7040401001	CHIN ASSY	1	
2	7040401002	FUNCTION KEY BD	1	
3	7040401003	PANEL	1	
4	7040401004	MYLAR SHIELDING CAN	1	
5	7040401005	INSIDE MIDDLE COVER LEFT	1	
6	7040401006	POWER BD	1	
7	7040401007	IF BD	1	
8	7040401008	INSIDE MIDDLE COVER RIGHT	1	
9	7040401009	Speaker	2	
10	7040401010	CHASSIS ASSY	1	
11	7040401011	REAR COVER ASSY	1	
12	7040401012	STAND BASE	1	
13	7040401013	STAND ARM	1	
14	7040401014	STAND SCREW	4	

1. Precaution

Please read the precaution as follows to prevent any damages to the LCD Monitor.

Make sure all power connector is removed. Be sure that the LCD Monitor is in power off status.

Prepare soft cloth and sponge as working platform to place LCD monitor horizontally.



Hold LCD by the side carefully and DON'T touch or press panel directly.



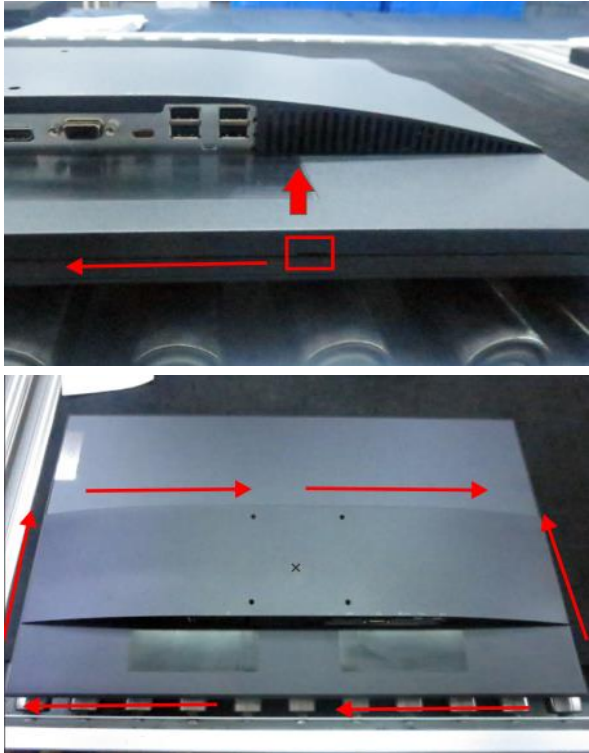


2. Appropriate tools

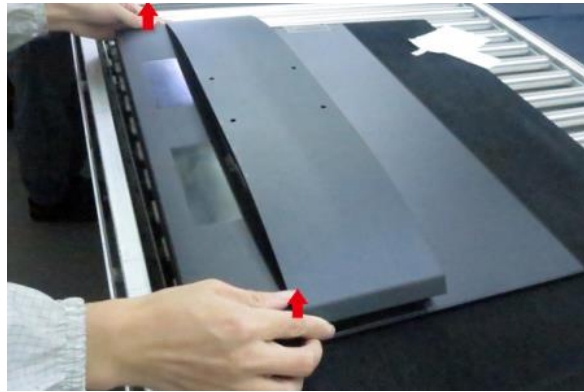
Select the Appropriate tools for disassembly and re-assembly.

Phillips screwdriver (#2)	
spacer screwdriver	
C/D disassembly tool	
Gloves or soft cloth	

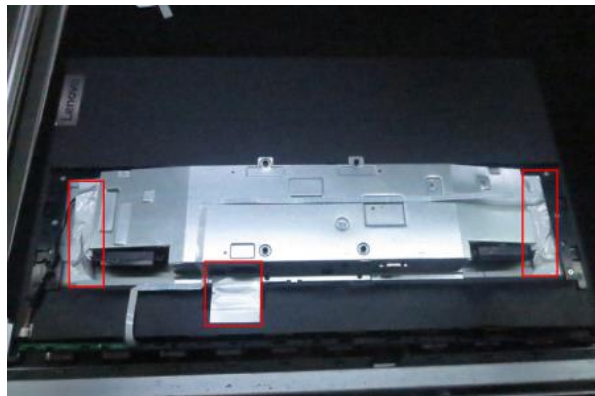
3. Disassembly SOP

<p>Put the monitor on a flat surface (Put the EPE on under the monitor)</p>	
<p>Remove the screw * 4pcs Tool : Screwdriver #2</p>	
<p>Use the C/D disassembly tool to release Rear cover hook from disassemble hole on bottom</p>	

Remove the rear cover

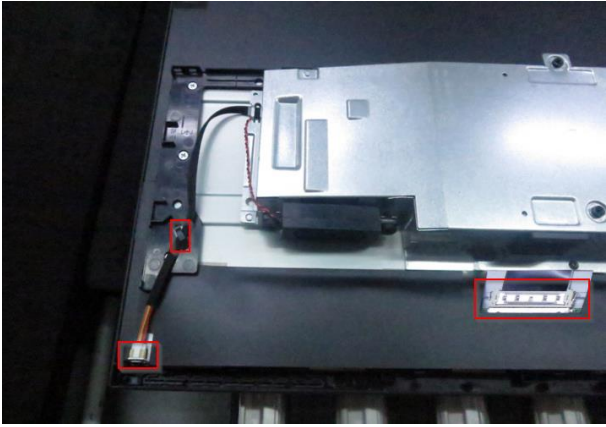


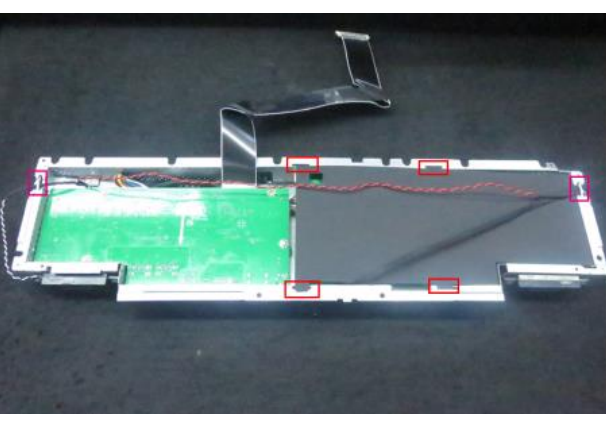


Remove All tape and foil

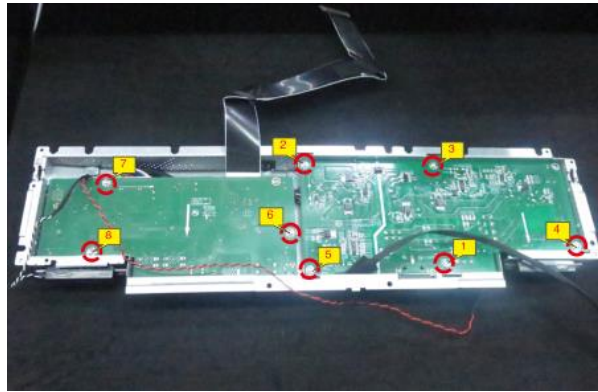


Unplug the keypad cable, then
release the keypad PCB from the
middle bezel



<p>Unplug light bar line and LVDS line</p>	
<p>Remove all screw: 12+2+2pcs Tool : Screwdriver #2 Tool : Spacer screwdriver</p>	
<p>Release the middle frame and main bracket from panel</p>	
<p>Release the speaker's cable from the hooks, then take out the mylar sheet from Main chassis</p>	

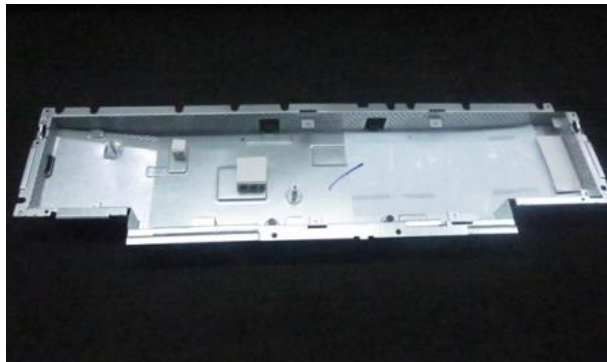
Remove 8pcs screw.
Tool : Screwdriver #2



Unplug two speakers from the
probers of main chassis



Take out PCB and Peel off all
mylar.



Take out the Thermal pads from
Power PCB

