



DR-SERIES

IMAGE FILING SYSTEMS

EFFICIENT AND AFFORDABLE DOCUMENT IMAGING

Canon DR-Series Scanners—your choice for workflow and budget optimization.

Table of Contents

DR-9080C/7580	4	DR-2580C	8
DR-7080C	5	DR-2050C	9
DR-5010C	6	DR-1210C	10
DR-3080CII	7	Optional Accessories/Exchange Program	11

DR-SERIES

IMAGE FILING SYSTEMS

PRODUCTION SCANNERS

DR-9080C



DR-7580



DR-7080C



DR-5010C



DEPARTMENTAL SCANNERS

DR-3080CII



WORKGROUP SCANNERS

DR-2580C



DR-2050C



DR-1210C





DR-9080C/7580



PRODUCTION SCANNERS

Redefining price/performance, the DR-9080C and DR-7580 scanners are standouts for affordability—but more importantly, they bring high-speed, production-level scanning to those with even the tightest budgets. By satisfying the criteria for image quality, easy handling, and optimized throughput, the DR-9080C and DR-7580 scanners easily meet the needs of dedicated scanning applications—exactly what high-end production scanners are expected to do. But the real story is how they can do so much so cost-effectively. This is what makes the Canon DR-9080C and DR-7580 scanners such unprecedented values.

- production document scanners
- designed for demanding applications
- high capacity at a cost-effective price



Specifications

Type:	Production Document Scanner			
Item Number:	DR-9080C (8926A002) DR-7580 (0640B002)			
Document Feeding:	Automatic or Manual			
Document Size:	Width: 2.2" – 12"; Length: 2.8" – 17" (Up to 39.4" Long Document Mode)			
Document Weight:	Automatic Feeding: 14–32 lb. Bond Manual Feeding: 11–40 lb. Bond			
Feeder Capacity:	500 Sheets			
Grayscale:	8-Bit			
Color:	24-Bit (DR-9080C Only)			
Scanning Element:	Contact Image Sensor (CMOS)			
Light Source:	RGB LED x 4			
Scanning Modes:	Simplex/Duplex/Color (DR-9080C Only)/Grayscale/ Black and White/ Error Diffusion/Advanced Text Enhancement/ Smoothing (DR-9080C Only)/MultiStream™			
Dropout Color:	RGB, User-Selectable (Front/Back/Both)			
Optical Resolution:	600 dpi			
Output Resolution:	100/150/200/300/400/600 dpi			
Scanning Speeds* (LTR Portrait @ 200 dpi):	DR-9080C		DR-7580	
	Simplex	Duplex	Simplex	Duplex
Black and White:	90 ppm	180 ipm	75 ppm	150 ipm
Grayscale:	90 ppm	180 ipm	75 ppm	150 ipm
Color (24-Bit):	55 ppm	95 ipm (With JPEG Compression)		
Interface:	1 USB 2.0 and 2 SCSI-III			
Scanner Drivers:	ISIS®/TWAIN for Windows® 98SE/2000/Me/XP/Windows NT® 4.0			
Bundled Software:	CapturePerfect® 3.0			
Dimensions (H x W x D):	12.2" x 18.1" x 20.7"			
Weight:	Approximately 55 lb.			
Power Consumption:	Maximum 120W (Energy-Saving Mode: 7W or Less)			
Options:	Imprinter/Endorser ED-600 with Die Drum 300/ Die Drum 300 with 8-Digit Dater/Mechanical Counter/ Barcode Software Module/Exchange Roller Kit			

* Examples based on typical settings, rated in pages/images per minute with letter-sized documents, portrait feeding direction, at 200 dpi. Actual processing speeds may vary based on PC performance and application software.

DR-7080C

COLOR UNIVERSAL FLATBED SCANNER

Canon DR-Series Scanners have a long tradition of breaking new ground with innovative features and outstanding price/performance. The Canon DR-7080C device is no exception. A combination flatbed/sheetfed color production scanner, it provides a high-speed scanning solution with the capability of scanning hard-to-handle documents, such as books and bound reports or documents too fragile to risk a trip through the feeder. With the DR-7080C scanner, Canon leverages the industry-leading technologies of both its award-winning imageRUNNER® and DR-Series Scanner product lines.



Specifications

Type:	Color Universal Flatbed Scanner with ADF		
Item Number:	9150A002		
Document Feeding:	Automatic Document Feeder/Flatbed		
Document Size:	ADF: Width: 5.5" – 12"; Length: 5" – 17" (Long Document Mode: 17"– 24.8"; Max. 21.3" @ 600 dpi) Flatbed (Max. Document Size): Width: 12"; Length: 17"		
Document Weight:	14–32 lb. Bond		
Feeder Capacity:	100 Sheets		
Grayscale:	8-Bit		
Color:	24-Bit		
Scanning Element:	3-Line CCD		
Light Source:	Xenon Lamp		
Scanning Modes:	Auto/Flatbed/Simplex/Duplex/Color/Grayscale/Black and White/ Error Diffusion/Advanced Text Enhancement/MultiStream™		
Dropout Color:	RGB, User-Selectable (Front/Back/Both)		
Optical Resolution:	600 dpi		
Scanning Speeds* (LTR Portrait @ 200 dpi):		Simplex	Duplex
	Black and White:	70 ppm	36 ipm
	Grayscale:	70 ppm	36 ipm
	Color (24-Bit):	70 ppm	36 ipm
Output Resolution:	100/150/200/240/300/400/600 dpi		
Interface:	USB 2.0 and SCSI-III		
Scanner Drivers:	ISIS®/TWAIN for Windows®98SE/2000/Me/XP/Windows NT® 4.0		
Bundled Software:	CapturePerfect® 3.0		
Dimensions (H x W x D):	11.8" x 22.6" x 23.7"		
Weight:	Approximately 70.4 lb.		
Power Consumption:	Maximum 151W (Energy-Saving Mode: 7W or Less)		
Options:	Exchange Roller Kit		

- color production document scanner
- flatbed or ADF feeding
- programmable control panel



* Examples based on typical settings, rated in pages/images per minute with letter-sized documents, landscape feeding direction, at 200 dpi. Actual processing speeds may vary based on PC performance and application software.

Monitor shown not included.



DR-5010C



COLOR PRODUCTION SCANNER

Today's document imaging requirements are more varied than ever. With this understanding, Canon designed the DR-5010C scanner to be a versatile image-processing machine. A robust color scanner, small enough to sit on your desktop and ready to capture hard-to-handle source materials, the DR-5010C device offers immediate work efficiency. It's ultra-fast; scanning color at the same rapid rate it processes black and white. And this user-friendly machine is loaded with diverse automatic and customizable functions that will change the way you think about the image-capture process.

- color production document scanner
- card scanning capability
- breakthrough image processing features



Specifications

Type:	Color Production Document Scanner		
Item Number:	9842A002		
Document Feeding:	Automatic or Manual		
Document Size:	Width: 2.1" – 11.8"; Length: 2.8" – 17" (Up to 39.4" Long Document Mode)		
Document Weight:		U-Turn Path	Straight Path
	Automatic Feeding:	14–32 lb. Bond	14–32 lb. Bond
	Manual Feeding:	11–40 lb. Bond	11–144 lb. Bond
Feeder Capacity:	100 Sheets		
Grayscale:	8-Bit		
Color:	24-Bit		
Scanning Element:	3-Line Contact Image Sensor (CMOS)		
Light Source:	RGB LED		
Scanning Modes:	Simplex/Duplex/Color/Grayscale/Black and White/ Error Diffusion/Advanced Text Enhancement/High-Speed Text Enhancement/MultiStream™		
Dropout Color:	RGB and Custom		
Optical Resolution:	600 dpi		
Output Resolution:	100/150/200/240/300/400/600 dpi		
Scanning Speeds*		Simplex	Duplex
(LTR Portrait @ 200 dpi):	Black and White:	50 ppm	100 ipm
	Grayscale:	50 ppm	100 ipm
	Color (24-Bit):	50 ppm	100 ipm
Interface:	USB 2.0 and SCSI-III		
Scanner Drivers:	ISIS®/TWAIN for Windows®98/2000/Me/XP/Windows NT®4.0		
Bundled Software:	CapturePerfect® 3.0, Adobe® Acrobat® 7.0 Standard		
Dimensions (H x W x D):	7.5" x 15.6" x 12.3"		
Weight:	Approximately 23 lb.		
Power Consumption:	83W (Energy-Saving Mode: 5W or Less)		
Options:	Imprinter 50F/50B/Barcode Module/Exchange Roller Kit		

* Examples based on typical settings, rated in pages/images per minute with letter-sized documents, portrait feeding direction, at 200 dpi. Actual processing speeds may vary based on PC performance and application software.

COLOR DESKTOP SCANNER

The unique ability to outperform everything in its class has made Canon's DR-3080CII scanner an unprecedented success. Building on this same innovative technology, Canon—as a leading imaging systems solution provider—now brings a new standard of price/performance to the departmental level with the Canon DR-3080CII high-speed, high-performance color desktop duplex scanner. Never before has so much advanced functionality, enhanced productivity, and superior reliability been in one compact package.



Specifications

Type:	Color Desktop Document Scanner		
Item Number:	9673A002		
Document Feeding:	Automatic or Manual		
Document Size:†	Width: 2.2"–10.1"; Length: 2.8"–14.3" (Up to 39.4" Long Document Mode)		
Document Weight:	Automatic Feeding: 14–32 lb. Bond Manual Feeding: 11–40 lb. Bond		
Feeder Capacity:	100 Sheets		
Grayscale:	8-Bit		
Color:	24-Bit		
Scanning Element:	Contact Image Sensor (CMOS)		
Light Source:	RGB LED		
Scanning Modes:	Simplex/Duplex/Color/Grayscale/Black and White/ Error Diffusion/Advanced Text Enhancement		
Dropout Color:	RGB, User-Selectable (Front/Back/Both)		
Scanning Resolution:	100 (Color Only)/200/300 dpi		
High-Speed Mode (Interpolated):	300 x 150 dpi (300 dpi)		
Scanning Speeds* (LTR Portrait @ 200 dpi):		Simplex	Duplex
	Black and White/Grayscale/ High Speed (300 dpi):	43 ppm	86 ipm
	Black and White:	32 ppm	64 ipm
	Grayscale:	32 ppm	64 ipm
	Color (24-Bit):	10 ppm	20 ipm
Interface:	USB 2.0 and SCSI-III		
Scanner Drivers:	ISIS®/TWAIN for Windows®98SE/2000/Me/XP/Windows NT®4.0		
Bundled Software:	CapturePerfect® 3.0, Adobe® Acrobat® 7.0 Standard		
Dimensions (H x W x D):	7.5" x 13.5" x 11"		
Weight:	Approximately 17.8 lb.		
Power Consumption:	Maximum 42W (Energy-Saving Mode: 10W or Less)		
Options:	Endorser ED-500 with Die Drum B110/Die Drum B110 with 8-Digit Dater/Carrying Cases/Exchange Roller Kit(s)		

- color desktop document scanner
- designed for departmental applications
- advanced functionality with superior reliability



* Examples based on typical settings, rated in pages/images per minute with letter-sized documents, portrait feeding direction, at 200 dpi. Actual processing speeds may vary based on PC performance and application software.

† Up to 11" x 17" with Folio Mode.

Monitor and keyboard shown not included.



DR-2580C



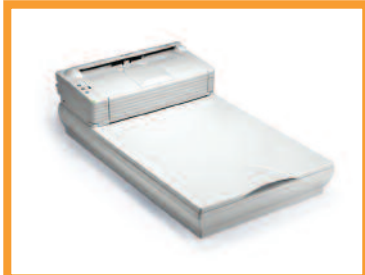
COMPACT PORTABLE SCANNER

The DR-2580C scanner is surprisingly compact and portable, so you can put it on your desktop or take it on the road. This versatile scanner is loaded with advanced scanning technology and easily handles a wide range of document types, including plastic cards. The DR-2580C scanner is not only one of the smallest, but also one of the most easy-to-use scanners in its class. Add the optional, user-installable flatbed scanner and scan books, passports, or fragile documents with simplicity.

- compact color document scanner
- flexible document-handling
- ultrasonic double-feed detection



DR-2580C with Optional Flatbed Unit



Specifications

Type:	Compact Color Document Scanner		
Item Number:	0080B002		
Document Feeding:	Automatic or Manual		
Document Size:†	Width: 2.1" – 8.5"; Length: 2.8" – 14" (Up to 39.4" Long Document Mode)		
Document Weight:	U-Turn Path	Straight Path	
	Automatic Feeding:	14–32 lb. Bond	11–40 lb. Bond
	Manual Feeding:	11–40 lb. Bond	11–40 lb. Bond
Feeder Capacity:	50 Sheets		
Grayscale:	8-Bit		
Color:	24-Bit		
Scanning Element:	Contact Image Sensor (CMOS)		
Light Source:	RGB LED		
Scanning Modes:	Simplex/Duplex/Color/Grayscale/Black and White/Error Diffusion Advanced Text Enhancement		
Dropout Color:	RGB, User-Selectable (Front/Back/Both)		
Optical Resolution:	600 dpi		
Output Resolution:	100/150/200/240/300/400/600 dpi		
Scanning Speeds* (LTR Portrait @ 200 dpi):	Simplex	Duplex	
	Black and White:	25 ppm	50 ipm
	Grayscale:	25 ppm	50 ipm
	Color (24-Bit):	13 ppm	18 ipm
	Color @150 dpi:	17 ppm	32 ipm
Interface:	USB 2.0		
Scanner Drivers:	ISIS®/TWAIN for Windows®98SE/2000/Me/XP		
Bundled Software:	CapturePerfect® 3.0, Adobe® Acrobat® 7.0 Standard		
Dimensions (H x W x D):	3.2" x 12.0" x 6.6"		
Weight:	Approximately 4.2 lb.		
Power Consumption:	Maximum 27W (Energy-Saving Mode: 6W or Less)		
Options:	Flatbed Unit/Half LTR Flatbed Unit/Barcode Software Module Carrying Case/Exchange Roller Kit/Two-Year CarePAK® (Exchange Program)		

* Examples based on typical settings, rated in pages/images per minute with letter-sized documents, portrait feeding direction, at 200 dpi. Actual processing speeds may vary based on PC performance and application software.

† Up to 11" x 17" with Folio Mode.

COMPACT DOCUMENT SCANNER

Canon's DR-2050C desktop duplex scanner is about the size of a file folder and less than four inches deep. But don't let its diminutive dimensions fool you. It's also fast, with grayscale and black-and-white duplex speeds of up to 40 images per minute. It even has color capability for important color documents. And with up to 600-dpi resolution, you won't get anything less than superior image quality.



Specifications

Type:	Compact Color Document Scanner		
Item Number:	0433B002		
Document Feeding:	Automatic or Manual		
Document Size:†	Width: 2.16" – 8.5"; Length: 2.75" – 14" (Up to 39.4" in Long Document Mode)		
Document Weight:	Automatic Feeding:	14–32 lb. Bond	
	Manual Feeding:	11–40 lb. Bond	
Feeder Capacity:	50 Sheets		
Grayscale:	8-Bit		
Color:	24-Bit		
Scanning Element:	Contact Image Sensor (CMOS)		
Light Source:	RGB LED		
Scanning Modes:	Simplex/Duplex/Color/Grayscale/Black and White/ Error Diffusion/Text Enhancement		
Dropout Color:	RGB, User-Selectable (Front/Back/Both)		
Optical Resolution:	600 dpi		
Scanning Resolution:	100/150/200/240/300/400/600 dpi		
Scanning Speeds* (LTR Portrait @ 200 dpi):		Simplex	Duplex
	Black and White:	20 ppm	40 ipm
	Grayscale:	20 ppm	40 ipm
	Color (24-Bit):	7 ppm	14 ipm
	Color @150 dpi:	10 ppm	20 ipm
Interface:	USB 2.0		
Scanner Drivers:	ISIS®/TWAIN for Windows®98SE/2000/Me/XP		
Bundled Software:	CapturePerfect® 3.0, Adobe® Acrobat® 7.0 Standard, OmniPage®SE 4		
Dimensions (H x W x D):	7.7" x 11.9" x 3.89"		
Weight:	Approximately 5 lb.		
Power Consumption:	Maximum 13W (Energy-Saving Mode: 4W or Less)		
Options:	Soft Carrying Case/Exchange Roller Kit Two-Year CarePAK® (Exchange Program)		

- compact color document scanner
- sleek, streamlined design
- high performance and exceptional value



* Examples based on typical settings, rated in pages/images per minute with letter-sized documents, portrait feeding direction, at 200 dpi. Actual processing speeds may vary based on PC performance and application software.

† Up to 11" x 17" with Folio Mode



DR-1210C



UNIVERSAL FLATBED SCANNER WITH ADF

The DR-1210C device is a universal color scanner offering Flatbed and ADF capabilities, user-friendly control panel, and industry-leading durability. Surprisingly affordable, this workgroup scanner offers fast and versatile scanning, even to the smallest SOHO office. For added value, this scanner is bundled with powerful software applications for a wide range of business needs. The DR-1210C scanner incorporates the reliability and advanced image processing capabilities inherent in the DR-Scanner line to provide high-end functionality at an entry-level price.

- flatbed and ADF capabilities
- efficient one-touch operation
- affordable and reliable office scanning



Specifications

Type:	Color Universal Flatbed Scanner with ADF
Item Code:	1211B002
Document Feeding:	Automatic or Flatbed
Document Size:	ADF: Width: 5.8" – 8.5"; Length: 3.9" – 14" Flatbed: Width: 8.5"; Length: 17" Flatbed (Max. Document Size): Width: 12"; Length: 17"
Document Weight:	14–32 lb. Bond
Feeder Capacity:	35 Sheets
Grayscale:	8-Bit
Color:	24-Bit
Scanning Element:	3-Line CCD
Light Source:	Cold-Cathode Fluorescent Lamp (CCFL)
Scanning Modes:	Simplex/Color/Grayscale/Black and White/ Advanced Text Enhancement/Error Diffusion
Dropout Color:	RGB
Optical Resolution:	600 dpi
Scanning Speeds* (LTR Portrait @ 300 dpi):	Simplex Black and White: 12 ppm Grayscale: 12 ppm Color (24-Bit): 12 ppm
Output Resolution:	100/150/200/240/300/400/600 dpi
Interface:	USB 2.0
Scanner Drivers:	ISIS®/TWAIN for Windows®2000/Me/XP
Bundled Software:	CapturePerfect® 3.0, Adobe® Acrobat® 7.0 Standard, Nuance OmniPage® SE 4, Presto! BizCard Reader 5 SE
Dimensions (H x W x D):	6.5" x 18.5" x 15"
Weight:	13.4 lb.
Power Consumption:	18W or Less (Energy-Saving Mode: 5W or Less)
Options:	Feed Roller Unit/Separation Pad/Two-Year CarePAK® (Exchange Program)

* Examples based on typical settings, rated in pages/images per minute with letter-sized documents at 300 dpi. Actual processing speeds may vary based on PC performance and application software.

DR-SERIES

Optional Accessories/Exchange Program

CARRYING CASES



DR-2050C
Soft Carrying Case

Item Number: 0249V914
Dimensions (H x W x D): 9.88" x 14" x 4"
Weight: Approx. 2 lb.

DR-2580C
Soft Carrying Case

Item Number: 0676V383
Dimensions (H x W x D): 2.75" x 14.5" x 7"
Weight: Approx. 1.5 lb.

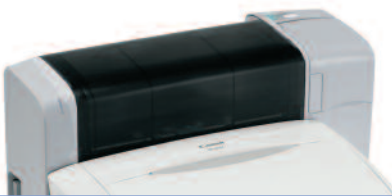
DR-3080CII
Soft Carrying Case

Item Number: 0134V880
Dimensions (H x W x D): 13" x 9" x 14"
Weight: Approx. 4 lb.

DR-3080CII
Hard Carrying Case

Item Number: 0134V882
Dimensions (H x W x D): 17.88" x 14.5" x 12"
Weight: Approx. 19 lb.

IMPRINTERS AND ENDORSERS



Imprinter 50F for DR-5010C

Item Number: 0837B001
Imprint Side: Front
Dimensions (H x W x D): 8.3" x 19.2" x 7.3"
Weight: Approx. 17.6 lb.
Ink Tank 50, Black: 0836B001
Ink Tank 50, Red: 0836B002

Imprinter 50B for DR-5010C

Item Number: 0837B002
Imprint Side: Back
Dimensions (H x W x D): 11.1" x 19.2" x 7.3"
Weight: Approx. 10.5 lb.
Ink Tank 50, Black: 0836B001
Ink Tank 50, Red: 0836B002

DETACHABLE FLATBED UNITS



Flatbed Unit
for DR-2580C

Item Number: 0106B001
Dimensions (H x W x D):
6.1" x 12.4" x 21.9"
Weight: 8.4 lb.

Half-Size Flatbed Unit
for DR-2580C

Item Number: 0106B003
Dimensions (H x W x D):
6.1" x 12.4" x 15.63"
Weight: 6.62 lb.



ED-500 Endorser for DR-3080CII

Endorsement Position Dial: Adjusts the Endorsement Position Vertically
Endorsement Area: Checks: 1.10" – 2.56"
Letter: 1.22" – 10.67"
Stamping Plates*(W x L): 1.18" x 1.57"
Dimensions (H x W x D): 7.20" x 13.39" x 6.06"
Weight: 9.48 lb. (with Power Supply)
Endorser ED-500 w/Die Drum B110: 3649A001
Die Drum B110 w/8-Digit Dater: 3654A003
Ink Roller, Black: 6331A001
Ink Roller, Red: 6334A001
Ink Roller, Purple: 6333A001
Ink Roller, Green: 6332A001

ED-600 Endorser for DR-9080C/7580

Endorsement Position Dial: Adjusts the Endorsement Position Vertically
Endorsement Area: Checks: .94" – 2.72"
Letter: 1.02" – 10.67"
Power: Supplied by Scanner
Stamping Plates (W x L): 1.18" x 1.57"
Dimensions (H x W x D): 8.46" x 14.17" x 6.14"
Weight: 10.58 lb.
Endorser ED-600 w/Die Drum 300: 3650A005
Die Drum 300 w/8-Digit Dater: 3650A006
Ink Roller, Black: 6331A001
Ink Roller, Red: 6334A001
Ink Roller, Purple: 6333A001
Ink Roller, Green: 6332A001

ADDITIONAL ACCESSORIES

Feed Roller Unit for DR-1210C:	1541B001
Separation Pad for DR-1210C:	1541B002
Exchange Roller Kit for DR-2050C:	7982A001
Exchange Roller Kit for DR-2580C:	0106B002
Exchange Roller Kit 500K for 3080CII:	6915A001
Exchange Roller Kit 1000K for 3080CII:	6915A002
Exchange Roller Kit for DR-5010C:	0434B002
Exchange Roller Kit for DR-9080C/7580:	8927A004
Exchange Roller Kit for DR-7080C:	9664A002
Hard Counter for DR-9080C/7580:	8927A002
Imprinter for DR-9080C/7580:	8927A001
Barcode Module for DR-2580C/5010C/7580/9080C:	0434B003

Canon CarePAK® Program

Two-Year CarePAK (Exchange Program) for DR-1210C:	1541B008
Two-Year CarePAK (Exchange Program) for DR-2050C:	7982A006
Two-Year CarePAK (Exchange Program) for DR-2580C:	0106B005



*Stamping Plate sold separately.



1-800-OK-CANON
www.usa.canon.com

Canon U.S.A., Inc.
One Canon Plaza
Lake Success, NY 11042

As an ENERGY STAR® Partner, Canon U.S.A., Inc. has determined that these DR-Series scanner devices meet the ENERGY STAR® guidelines for energy efficiency. ENERGY STAR and the ENERGY STAR mark are registered U.S. marks. ISIS and MultiStream are trademarks of EMC Corporation. Windows and Windows NT are registered trademarks of Microsoft Corporation in the United States and/or other countries. Adobe and Acrobat are registered trademarks of Adobe Systems Incorporated in the United States and/or other countries. OmniPage is a registered trademark of Nuance Communications, Inc., and/or its subsidiaries in the United States and/or other countries. CapturePerfect is a registered trademark of Canon Electronics Inc. CANON and IMAGERUNNER are registered trademarks of Canon Inc. in the United States and may also be registered trademarks or trademarks in other countries. CAREPAK is a registered trademark of Canon U.S.A., Inc. IMAGEANYWARE is a trademark of Canon. All referenced product names and other marks are trademarks of their respective owners.

Specifications subject to change without notice.
©2006 Canon U.S.A., Inc. All rights reserved.

0063W635
0606-DRFL-5M-LCR



PRINTED ON RECYCLED
PAPER IN THE U.S.A.

