

Jabra Speak 510



User manual

© 2015 GN Audio A/S . All rights reserved. Jabra® is a registered trademark of GN Audio A/S. All other trademarks included herein are the property of their respective owners. The Bluetooth® word mark and logos are owned by the Bluetooth SIG, Inc. and any use of such marks by GN Audio A/S is under license.

Made in China
MODEL: PHS002W



Declaration of Conformity can be found on
www.jabra.com/doc

Contents

1. Welcome	4
2. Speaker overview	5
2.1 Turn on the jabra speak 510	
2.2 Charging the Jabra Speak 510	
3. Connecting	7
3.1 Connect to Jabra Link 370	
3.2 Connect to mobile device (Bluetooth)	
3.3 Connect to Bluetooth headset	10
4. How to use the Jabra Speak 510	11
4.1 Multiple call handling	
4.2 Switch between bluetooth devices	
4.3 Voice guidance on/off	
4.4 Smart button	
5. Software.....	15
5.1 Jabra direct	
5.2 Update Jabra Speak 510 firmware	
6. Support.....	16
6.1 FAQ	
6.2 How to care for your Jabra Speak 510	

1. Welcome

Thank you for purchasing the Jabra Speak 510. We hope you will enjoy it!

JABRA SPEAK 510 FEATURES

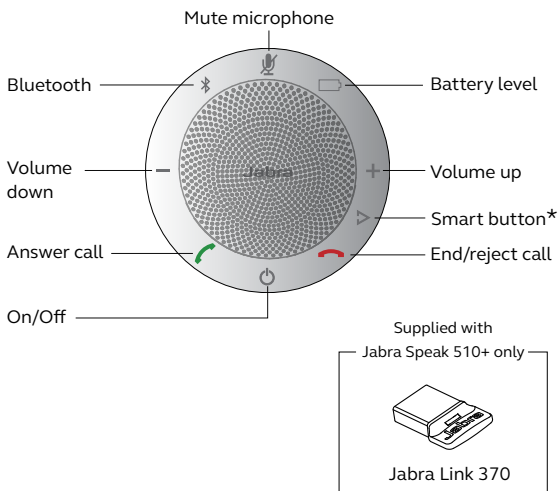
- Answer, end, reject and mute calls.
- Connect to computer via USB or Jabra Link 370.
- Connect wirelessly to mobile device via Bluetooth.
- Portable design.
- Omni-directional microphone.
- Wideband audio for exceptional sound quality.
- LED, audio indicators and voice guidance.
- Up to 15 hours talk time.
- Interact with your voice assistant (phone dependent) or speed dial with the one-touch Smart button* (must be enabled in Jabra Direct).

*Newer Speak 510 variants (with the Smart button) have a Ver. ID beginning with D, or later. Older Speak 510 variants (without the Smart button) have a Ver. ID beginning with A, B, or C.

Newer Speak 510+ variants (with the Smart button) have a Ver. ID beginning with F, or later. Older Speak 510+ variants (without the Smart button) have a Ver. ID beginning with A, B, C, or D.

The Ver. ID can be found on the bottom of the Speak 510.

2. Speaker overview



*Nyare Speak 510-modeller (med Smart-knapp) har ett ver.- ID som börjar med D, eller senare. Äldre Speak 510-modeller (utan Smart-knapp) har ett ver.- ID som börjar med A, B eller C.

Nyare Speak 510-modeller (med Smart-knapp) har ett ver.- ID som börjar med F eller senare. Äldre Speak 510-modeller (utan Smart-knapp) har ett ver.- ID som börjar med A, B, C eller D.

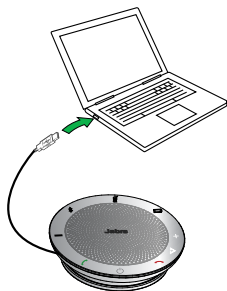
Ver.- ID finns nertill på Speak 510.

2.1 Turn on the jabra speak 510

- Plug the Jabra Speak 510 USB cable into any available USB port on your computer, or
- Press and hold (2 secs) the On/Off button to turn the Jabra Speak 510 on or off.



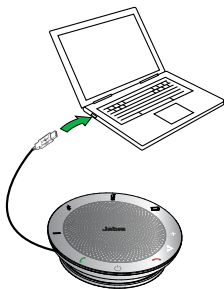
2.2 Charging the Jabra Speak 510



Plug the Jabra Speak 510 USB cable into any available USB port on your computer to charge the battery. The battery light is red when charging, and green for 1 minute when fully charged.

3. Connecting

1. Plug the Jabra Speak 510 USB cable into any available USB port on your computer.
2. Select the Jabra Speak 510 as the default audio device in Windows Control Panel sound settings, and in your softphone audio settings.



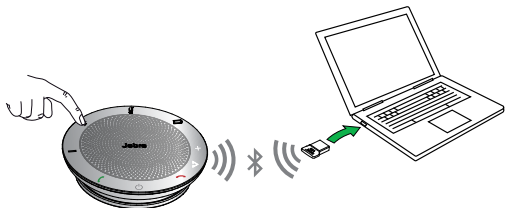
3.1 Connect to Jabra Link 370

If using a Jabra Speak 510+, the speakerphone and Jabra Link 370 are pre-paired and ready to use out of the box.

To connect the speaker and Jabra Link 370:

1. Press and hold (2 secs) the Bluetooth button on the Jabra Speak 510 until the Bluetooth light flashes blue. Release the button when you hear the connection instructions.
2. Plug the Jabra Link 370 into any available USB port on your computer.
3. The connection is established when the light turns solid blue.

NOTE: Ensure that all Bluetooth devices previously connected to the Jabra Link 370 are switched off.



3.2 Connect to mobile device (Bluetooth)

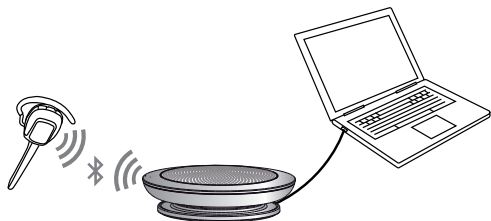
1. Press and hold (2 secs) the Bluetooth button on the Jabra Speak 510 until the Bluetooth light flashes blue. Release the button when you hear the connection instructions.
2. Enable Bluetooth on your mobile device, and select the Jabra Speak 510 from the list of available Bluetooth devices. If prompted for a password enter 0000.



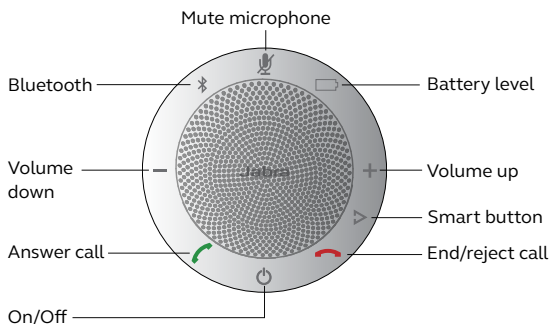
3.3 Connect to Bluetooth headset






For privacy, a bluetooth headset can be connected to the Jabra Speak 510.




1. Plug the Jabra Speak 510 into any available USB port on your computer.
2. Put the Bluetooth headset into pairing mode (refer to your headset manual for instructions).
3. Press and hold (8 secs) the Bluetooth button on the Jabra Speak 510 until the Bluetooth light flashes blue and then flashes green. Release the button when you hear 'Connect to headset'.
4. The connection is established when the light turns solid blue.



4. How to use the Jabra Speak 510





	On/Off	Press and hold (2 secs) the On/Off button until the lights flash
	Answer call	Tap the Answer call button
	End call	Tap the End/reject call button
	Reject call	Tap the End/reject call button
	Speaker volume	Tap the Volume up or Volume down button
	Battery status	Tap the Battery status button to display the current battery level

	Connect with new Bluetooth device	Press and hold (2 secs) the Bluetooth button to connect with a new Bluetooth device
	Reconnect/disconnect with Bluetooth device	Tap the Bluetooth button to reconnect/disconnect with a Bluetooth device
	Mute microphone	Tap the Mute microphone button
	Voice assistant (off by default, Smartphone dependent)	Press the Smart button (use Jabra Direct to enable voice assistants, e.g. Siri, Google Assistant, Cortana)
	Speed dial (off by default, computer or Smartphone dependent)	Press the Smart button (use Jabra Direct to enable speed dial)

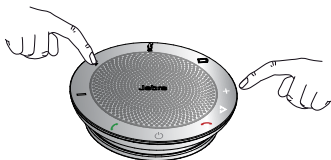
4.1 Multiple call handling

The Jabra Speak 510 can accept and handle multiple calls simultaneously.

	Put current call on hold and answer incoming call	Tap the Answer call button
	Switch between held call and active call	Tap the Answer call button
	Reject incoming call	Tap the End/reject call button

4.2 Switch between bluetooth devices

1. Press and hold the Bluetooth button and tap the Volume up or Volume down button to cycle between the connected devices. The connected devices will be announced.
2. Release the Bluetooth button when the correct device is announced. The Jabra Speak 510 will establish a connection with the device(s). When a connection has been established the device(s) will be announced.



4.3 Voice guidance on/off

To turn voice guidance on/off, press and hold (8 secs) the **Mute** button until you hear 'Voice guidance off' or 'Voice guidance on'.

NOTE: Not all voice prompts will be disabled when voice guidance is turned off.

4.4 Smart button

The Smart button is off by default.

To use the Smart button to activate your smartphone's voice assistant (e.g. Siri, Google Assistant, Cortana) or to speed dial a phone number on your smartphone or computer, install Jabra Direct on your computer and enable the Smart button in the Speak 510 settings.

5. Software

5.1 Jabra direct

Jabra Direct is software designed to support, manage and enable optimal functionality for Jabra devices. It is highly recommended to download and install Jabra Direct.

Download the latest version - jabra.com/direct

5.2 Update Jabra Speak 510 firmware

Firmware updates improve performance or add new functionality to Jabra devices.

To update firmware:

1. Connect to a computer via USB.
2. Download and install Jabra Direct.
3. Check for the latest firmware via Jabra Direct.
You will receive notifications whenever there is an update for your device.

6. Support

6.1 FAQ

View the FAQs on Jabra.com/speak510.

6.2 How to care for your Jabra Speak 510

- Always store the Jabra Speak 510 with the power off and safely protected.
- Avoid storage at extreme temperatures (above 70°C/158°F or below -20°C/-4°F). This can shorten battery life and may affect operation. High temperatures may also degrade performance.
- Do not expose the Jabra Speak 510 to rain or other liquids.

jabra.com/speak510

REV K