

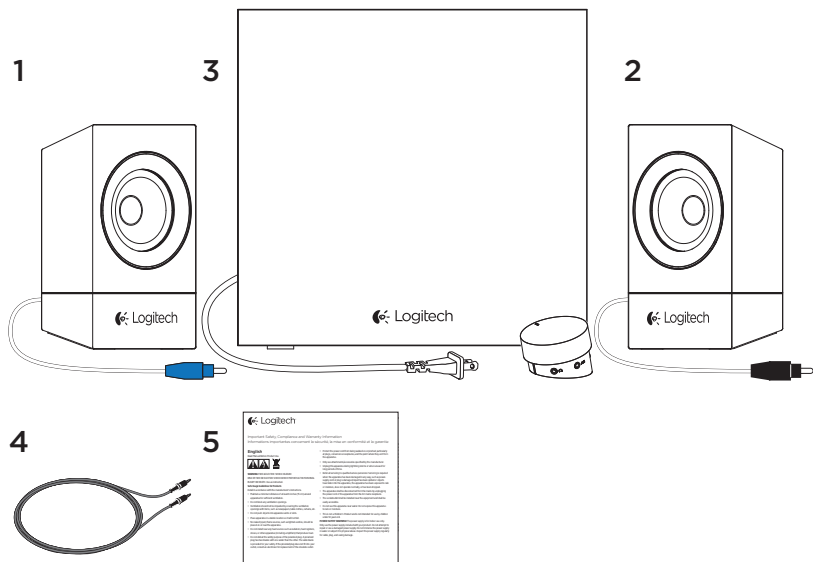


Getting started with

Logitech® z533 Multimedia Speaker System

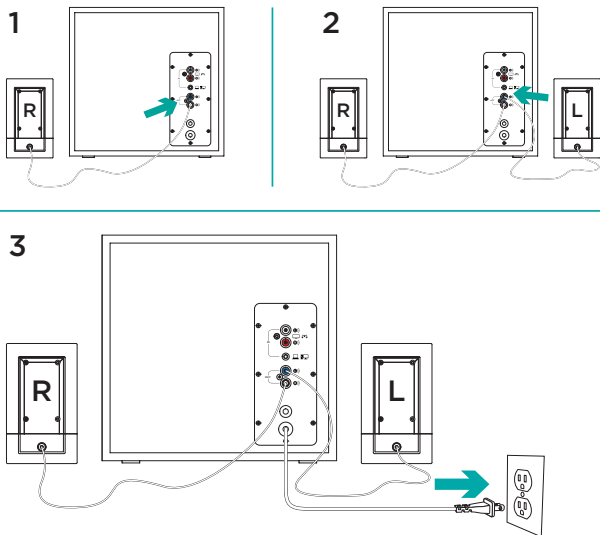


What's in the box



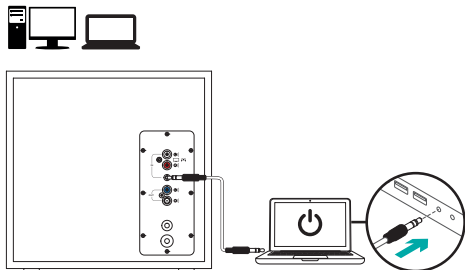
1. Left Satellite
2. Right satellite
3. Subwoofer (including wired control pod)

4. 3.5 mm to 3.5mm cable
5. User documentation

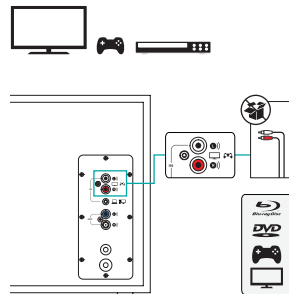
 Set-up

1. Plug the right satellite cable into the black subwoofer jack.
2. Plug the left satellite cable into the blue subwoofer jack.
3. Plug the power cord into an electrical outlet.

4A



4B



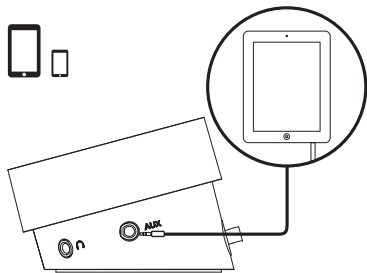
4. A. If you have a 3.5mm outlet on your device:

- Insert the 3.5mm to 3.5mm cable plug from the subwoofer into the audio jack on your device

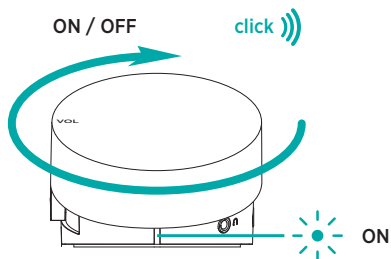
B. If you have a RCA outlet on your device:

- Insert the RCA cable on the subwoofer (the RCA cable is not included in the box and must be purchased separately)
- Insert the other end of the RCA cable into the RCA outlet on your device (TV, Gaming Console, etc)

4C



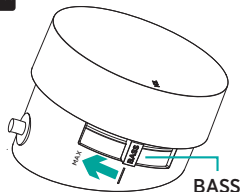
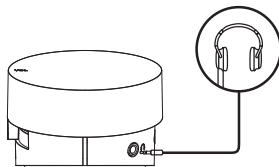
5






C. If you have a 3.5mm outlet on your device:

- Insert the 3.5mm to 3.5mm cable plug from the wired remote into the 3.5mm outlet on your device
5. Switch ON your Multimedia Speaker System z533 by turning clockwise the volume knob located on top of the wired remote. You will notice a “click” sound once the system is ON (the LED in front of the wired remote will also turn on)

Features



-  **ADJUSTING SPEAKER VOLUME**
Adjust your Multimedia Speaker System z533 volume with the wheel located on top of the wired remote (VOLUME UP - turn the wheel clockwise for volume up. VOLUME DOWN - turn wheel counter-clockwise for volume down).
-  **USING HEADPHONES**
Most types of analog headphones with a 3.5mm connector can be plugged into the headphone jack on the right of the wired remote.
-  **ADJUSTING BASS VOLUME**
To adjust the bass level of your Multimedia Speaker System z533, move the bass slider located on the left of the wired remote
 - Move the slider clockwise to increase bass
 - Move the slider counter-clockwise to reduce the bass



www.logitech.com/support/z533

© 2015 Logitech. All rights reserved. Logitech, the Logitech logo, and other Logitech marks are owned by Logitech and may be registered. Registered in the U.S. and other countries. All other trademarks are the property of their respective owners. Logitech assumes no responsibility for any errors that may appear in this manual. Information contained herein is subject to change without notice.

621-000609.002