

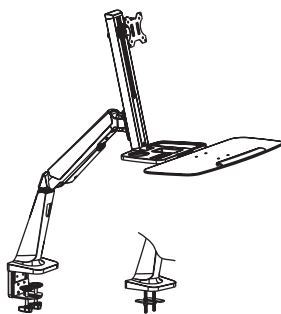
Owner's Manual



WorkWise™

Single-Display Sit-Stand Desk-Mount Workstation

Model: WWSS1332C



CAUTION: DO NOT EXCEED MAXIMUM LISTED WEIGHT CAPACITY (17.6 lb. / 8 kg). SERIOUS INJURY OR PROPERTY DAMAGE MAY OCCUR!

Este manual esta disponible en español en la página de Tripp Lite: www.tripplite.com

Ce manuel est disponible en français sur le site Web de Tripp Lite : www.tripplite.com

Русскоязычная версия настоящего руководства представлена на веб-сайте компании Tripp Lite по адресу: www.tripplite.com

Dieses Handbuch ist in deutscher Sprache auf der Tripp Lite-Website verfügbar: www.tripplite.com

PROTECT YOUR INVESTMENT!

Register your product for quicker service and ultimate peace of mind. You could also win an ISOBAR6ULTRA surge protector—a \$100 value!
www.tripplite.com/warranty



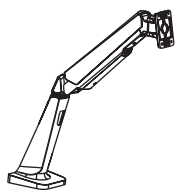
1111 W. 35th Street, Chicago, IL 60609 USA • www.tripplite.com/support

Copyright © 2017 Tripp Lite. All rights reserved.

Component Checklist



IMPORTANT: Ensure all parts according to the component checklist have been received prior to installation. If any parts are missing or faulty, visit www.triplite.com/support for service.



A

Bracket Arm
x1



B

Support Mast
x1



C

Keyboard Shelf
x1



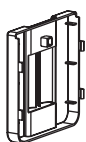
D

Clamp Top
x1



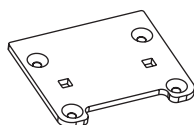
E

Clamp Bottom
x1



F

Cable Clamp
x1



G

Grommet
Mount Plate
x1



H

Pressure Plate
x2



I

M8 x 105
x2



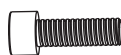
J

M6 x 10
x4



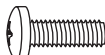
K

M6 x 12
x4



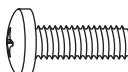
L

M8 x 25
x2



M

M4 x 12
x4



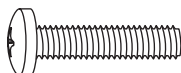
N

M5 x 12
x4



O

M4 x 16
x4



P

M5 x 16
x4



Q

5 x 12 x 1
x4



R

D8
x2



S

8 x 5 Spacer
x4



T

M8
x2



U

4 mm Hex Key
x1



V

6 mm Hex Key
x1



W

Wrench
x1

The WWSS1332C Single-Display Sit-Stand Workstation offers two different mounting methods: by desk clamp or by grommet mount. For easy and convenient installation and removal, use the desk clamp mounting option. For a permanent mounting solution, use the grommet mounting option.

Desk Clamp Assembly – Follow steps **1a-1** to **1a-4** below.

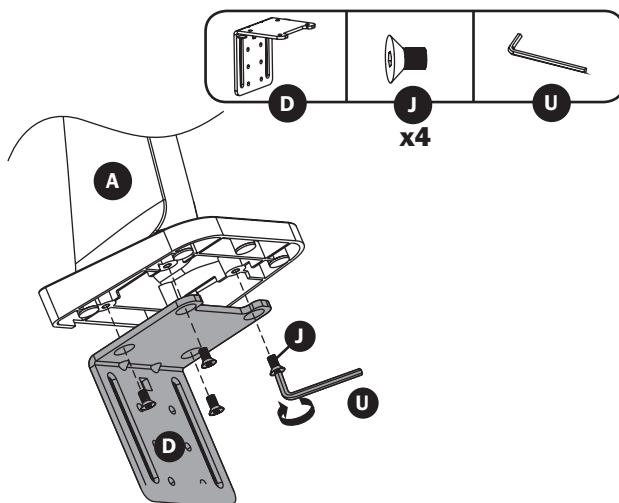
Grommet Mount – Go to page 5 and follow steps **1b-1** to **1b-2**.

Step **2** for both mounting options begins on page 6.

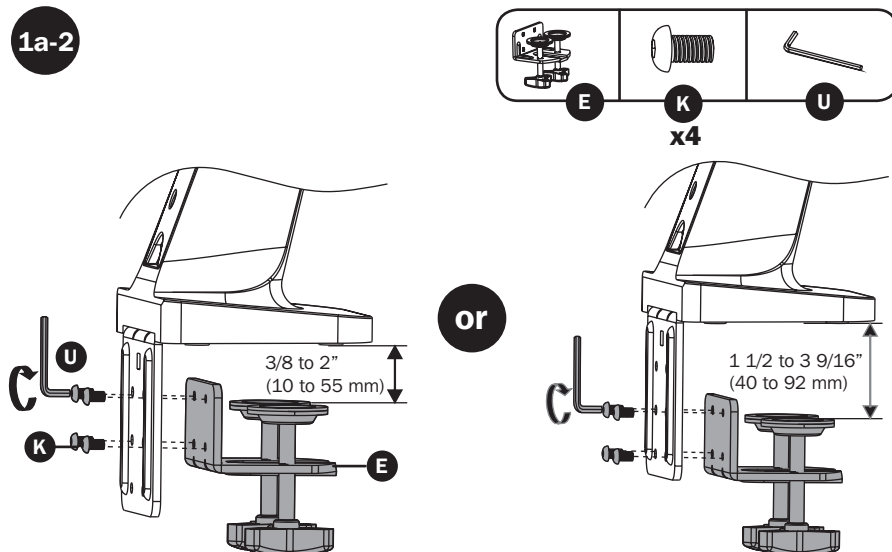
Desk Clamp Assembly Option

Note: For instructions on Grommet Mount Assembly, go to page 5.

1a-1

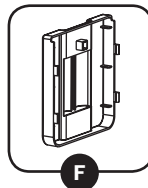
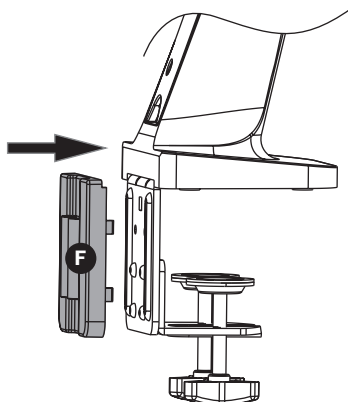


1a-2

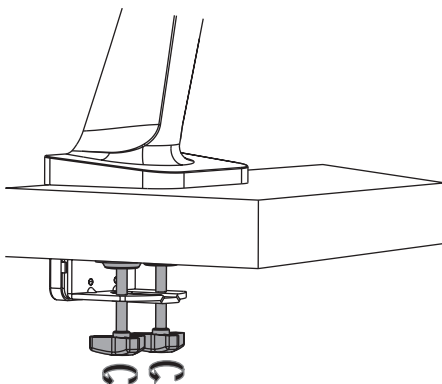


Desk Clamp Assembly Option

1a-3



1a-4

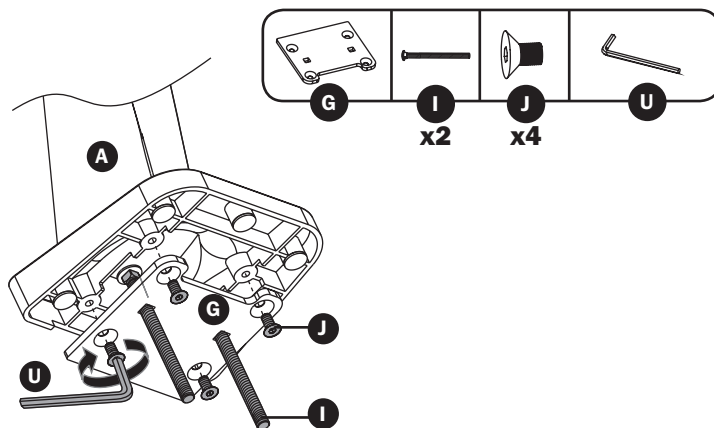


To proceed with step 2 of assembly, go to page 6.

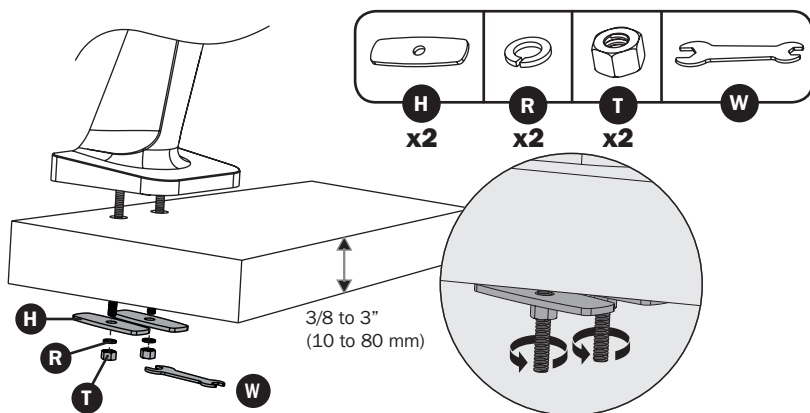
Grommet Mount Assembly Option

Note: For instructions on Clamp Assembly, go to page 3.

1b-1



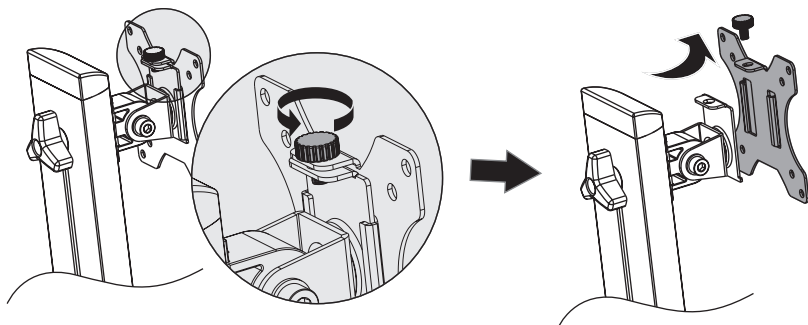
1b-2



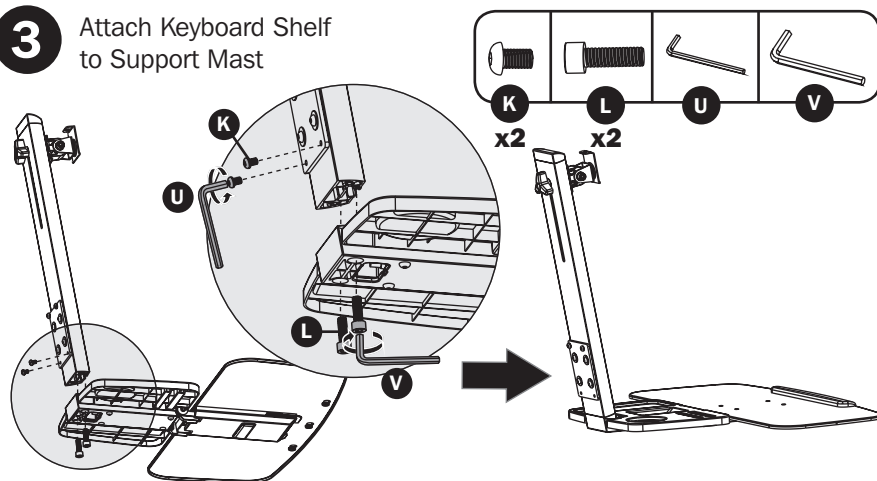
To proceed with step 2 of assembly, go to page 6.

Desk Clamp/Grommet Mount Assembly

2 Remove VESA Plate from Support Mast

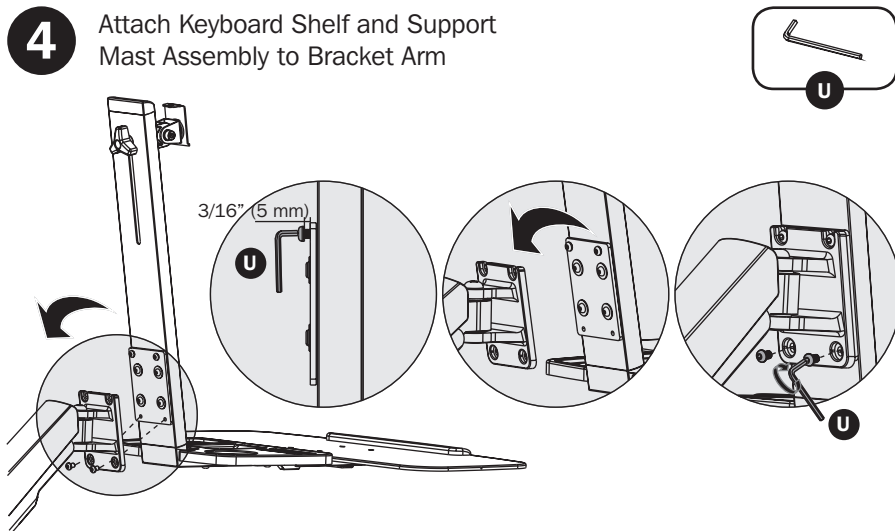


3 Attach Keyboard Shelf to Support Mast

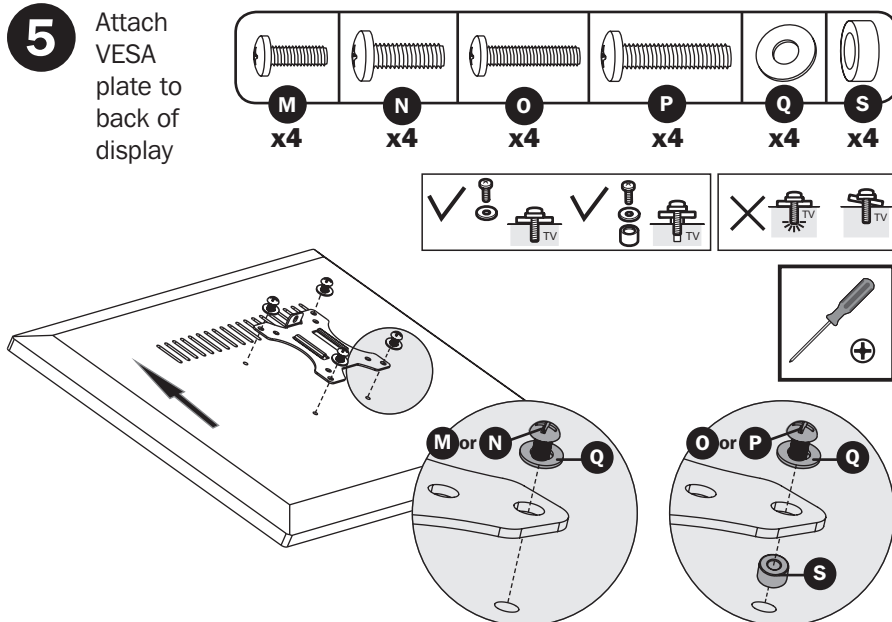


Desk Clamp/Grommet Mount Assembly


- 4** Attach Keyboard Shelf and Support Mast Assembly to Bracket Arm



- 5** Attach VESA plate to back of display

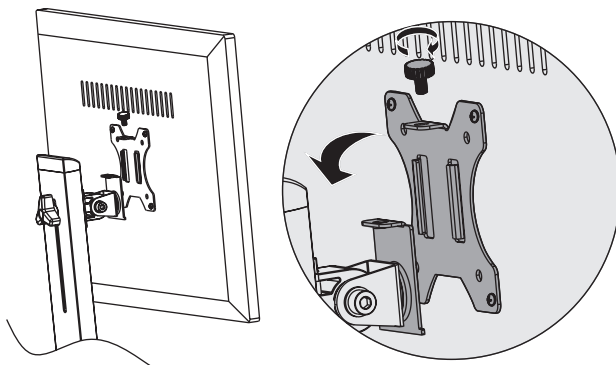


Note: Firmly secure the VESA plate to the display using the appropriate screws, washers and spacers (if necessary).

 **Do not over-tighten screws.**

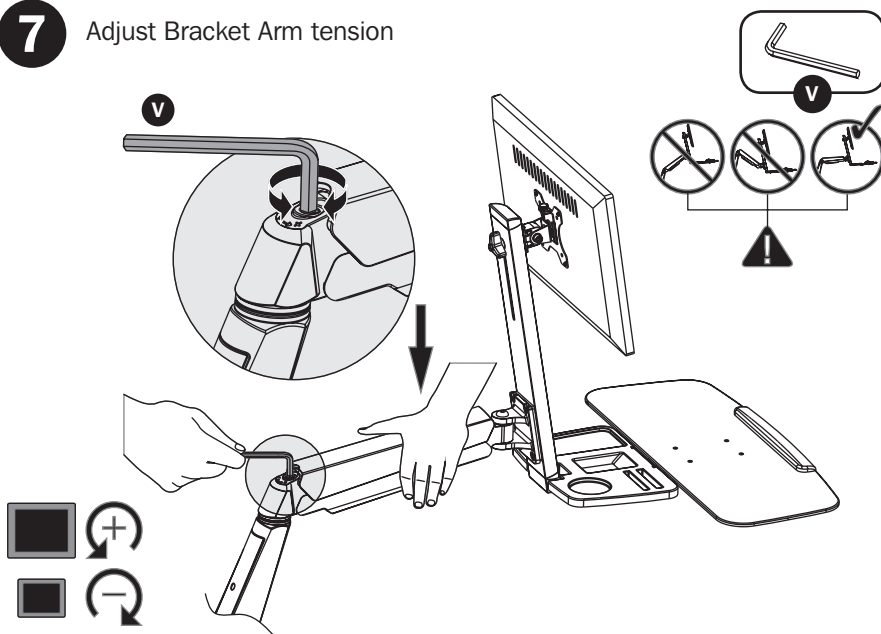
Desk Clamp/Grommet Mount Assembly

6 Slide VESA plate and Display on to the Support Mast



Using an assistant or mechanical lifting equipment, lift the display with attached VESA plate. Slide the VESA plate over the Support Mast bracket. Reattach the top knob to secure the VESA mount (removed in step 1).

7 Adjust Bracket Arm tension



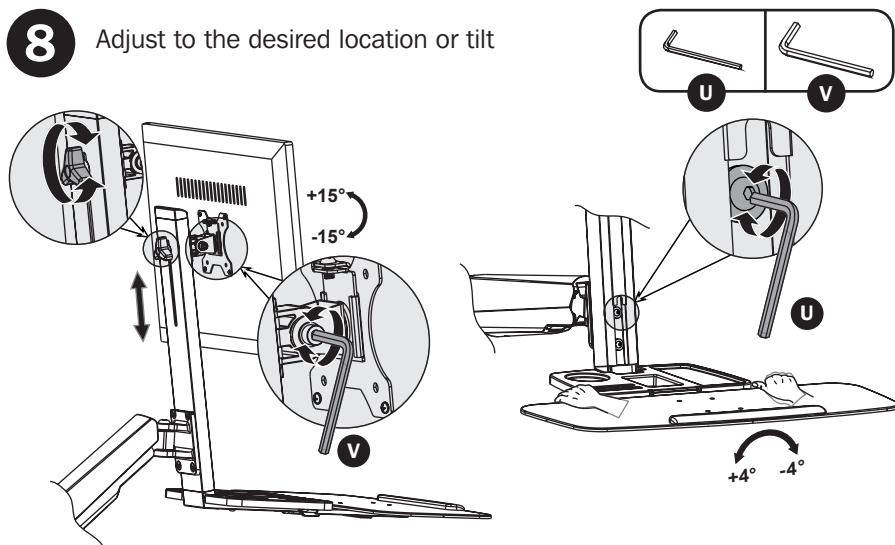
Keep the bracket arm level during tension adjustment. You may need to slightly loosen or tighten the adjustment screw using the provided 6 mm Hex Key, depending on the weight of display installed.

If display settles on its own, rotate adjustment screw towards the “+” symbol.

If display rises on its own, rotate adjustment screw towards the “-” symbol.

Desk Clamp/Grommet Mount Assembly

8 Adjust to the desired location or tilt



To correct the tilting angle, tighten the adjustment screws using the provided Hex Keys (or tighten the knob).

Maintenance

- Check that the bracket is secure and safe to use at regular intervals (at least every three months).
- Please visit www.tripplite.com/support if you have any questions.

Warranty and Product Registration

5-Year Limited Warranty

Seller warrants this product, if used in accordance with all applicable instructions, to be free from original defects in material and workmanship for a period of 5 years from the date of initial purchase. If the product should prove defective in material or workmanship within that period, Seller will repair or replace the product, in its sole discretion.

THIS WARRANTY DOES NOT APPLY TO NORMAL WEAR OR TO DAMAGE RESULTING FROM ACCIDENT, MISUSE, ABUSE OR NEGLIGENCE. SELLER MAKES NO EXPRESS WARRANTIES OTHER THAN THE WARRANTY EXPRESSLY SET FORTH HEREIN. EXCEPT TO THE EXTENT PROHIBITED BY APPLICABLE LAW, ALL IMPLIED WARRANTIES, INCLUDING ALL WARRANTIES OF MERCHANTABILITY OR FITNESS, ARE LIMITED IN DURATION TO THE WARRANTY PERIOD SET FORTH ABOVE; AND THIS WARRANTY EXPRESSLY EXCLUDES ALL INCIDENTAL AND CONSEQUENTIAL DAMAGES. (Some states do not allow limitations on how long an implied warranty lasts, and some states do not allow the exclusion or limitation of incidental or consequential damages, so the above limitations or exclusions may not apply to you. This warranty gives you specific legal rights, and you may have other rights which vary from jurisdiction to jurisdiction).

WARNING: The individual user should take care to determine prior to use whether this device is suitable, adequate or safe for the use intended. Since individual applications are subject to great variation, the manufacturer makes no representation or warranty as to the suitability or fitness of these devices for any specific application.

PRODUCT REGISTRATION

Visit www.tripplite.com/warranty today to register your new Tripp Lite product. You'll be automatically entered into a drawing for a chance to win a FREE Tripp Lite product!* * No purchase necessary. Void where prohibited. Some restrictions apply. See website for details.

Tripp Lite has a policy of continuous improvement. Specifications are subject to change without notice.



1111 W. 35th Street, Chicago, IL 60609 USA • www.tripplite.com/support