


Start Here!



PowerZone

Tri Band Whole Home Mesh Wi-Fi System

# Simple Setup Guide

 **IMPORTANT:**  
For proper installation, start with "Covr Point A". Only plug in and power up the extension Covr Point when directed to during setup.

There are two easy ways to set up your Covr Wi-Fi System, choose one of the following:


Option 1) **D-Link Wi-Fi App Setup**


Option 2) **Web Browser Setup**

## Package Contents




## LED Behaviour

 **Solid White**  
This means everything is connected and working properly.

 **Flashing Orange - Covr Point A**  
**No internet connection** - Try powering off your modem for 30 seconds (removing any backup battery if applicable) and powering it back on.

 **Flashing White - Extension Covr Point**  
**Weak Signal** - Try moving it closer to Covr Point A.

 **Flashing Orange - Extension Covr Point**  
**Not In Range/No Connection** - Try moving it closer to Covr Point A.

 **Solid Red - Any Covr Point**  
Your Covr Points will be solid red during boot up (powered on). Boot up can take anywhere from 2-3 minutes.

 **Flashing Red - Any Covr Point**  
Flashing Red indicates that there is a problem with the device. If flashing red, please contact our support team.

## Option 1:

### D-Link Wi-Fi App Setup (iOS and Android Devices)

1 Download the **D-Link Wi-Fi** app from the App Store or Google Play. Run the app and tap "**Install New Device**" (**COVR-R2203**) to get started.



**NOTE:** To keep your Covr System running at peak performance and take advantage of new features, it is recommended that you keep your firmware up to date.

We highly recommend that you enable the **AUTO FIRMWARE UPDATE** feature. This will ensure that your Covr System is always running the latest firmware.

See other side for **Option 2 (Web Browser Setup) and Placement Tips** 



## IMPORTANT:

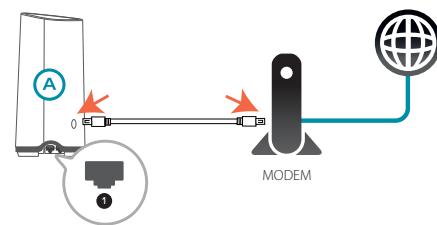
For proper installation, start with "Covr Point A". Only plug in and power up the extension Covr Point when directed to during setup.

**Option 2:** (Only required if you did not install using Option 1 - D-Link Wi-Fi App Setup)

## Web Browser Setup

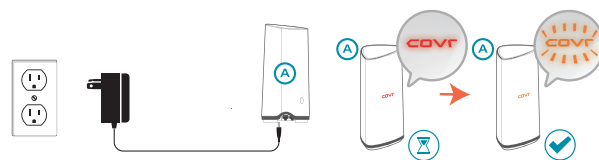
(PC/Mac/Mobile device)

- 1 Power off your Internet modem and connect one end of the Ethernet cable to port 1 on **Covr Point A**, and connect the other end to your Internet-connected modem.



**NOTE:** If your DSL or cable modem uses a battery backup, please remove the backup battery and ensure all lights are off on the modem. Refer to the modem's user manual if required.

- 2 Power your Internet modem back on and plug in **Covr Point A**. Wait for the Covr LED to turn from red to flashing orange before moving on to the next step. This may take up to 3 minutes.



- 3 On a PC/Mac or mobile device, connect to the Wi-Fi name (SSID) printed on the bottom of **Covr Point A**, or on the included Wi-Fi Configuration Card.



**NOTE:** Ethernet Setup is not supported.

- 4 Open a web browser and type **http://covr.local/** into a web browser and follow the instructions to complete the setup.



## Covr Point Placement Tips

Place your Covr Points around your home to extend your whole home Wi-Fi. For best performance, place the Covr Points close enough to each other to maintain a strong signal. Use the LED Signal Indicator to help find a location. (See LED behaviour on previous page.)

