

A solid green vertical bar is positioned on the left side of the page, partially overlapping the text area.

User Manual

Mini Wireless Screen Sharing

GWAVRD

PART NO. M1670

Table of Contents

Introduction	4
Package Content	5
System Requirement	6
Overview	7
Hardware Installation	8
Operation	12
Trouble Shooting	24
Compliance Information	27
Limited Warranty	28
Contact	29

©2021 IOGEAR. All Rights Reserved. Part No. M1670 IOGEAR and the IOGEAR logo are registered trademarks of Aten Technology, Inc. HDMI and related logo are trademarks or registered trademarks of HDMI Licensing Administrator, Inc. (or affiliate) in the United States and other countries. Windows is either a registered trademark or trademark of Microsoft Corporation in the United States and/or other countries. MacOS is a trademark of Apple Inc., registered in the U.S. and other countries. Android is a trademark of Google LLC. All other trademarks, names, logos and brands are the properties of their respective owners. Reproduction in whole or in part without permission is prohibited. Tested to comply with FCC and CE Standards. FOR HOME OR OFFICE USE. Specifications subject to change without notice.

Introduction

IOGEAR's Mini Wireless Screen Sharing receiver is the perfect solution for wirelessly streaming video and audio from your Windows® 10+ PC, Android™ device, Apple® macOS® X, iPhone® or iPad® to your HDTV, projector or monitor. Use the built-in Wi-Fi to stream audio and video from up to 30 feet to any connected screen. Enjoy all your favorite content such as movies, videos, photos and online streaming sites including YouTube®, Hulu® and Netflix® in HD from a single low-profile receiver without any additional cables or dongles on your PC from the browser.

Note: Some video apps from your iOS™ devices to a TV screen may not be supported such as Netflix, Amazon prime video, Hulu, YouTube TV, etc. due to DRM. However, Android users may use their built-in casting app. (such as Samsung's Smart View).

Package Content

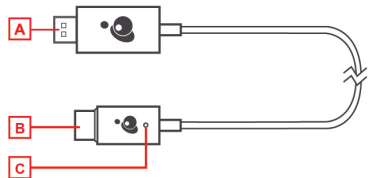
- 1 x Receiver
- 1 x Quick Start Guide
- 1 x Warranty Card

System Requirement

- Windows 10 or later.
- MacOS 10.14 and later with computer using Metal support graphics adapter.
- iPad iOS 10 and later.
- iPhone iOS 10 and later.
- Android Smart phones version 10 (Quince Tart) and later.
- Google® Chromebook™.
- HDTV or Projector with HDMI® port.

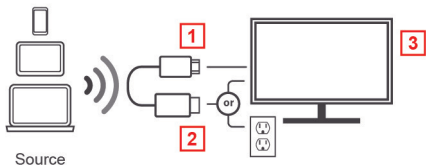
Overview

- A. USB-A power connector.
- B. HDMI connector.
- C. Reset Button (please refer to Troubleshooting #5c instruction).



Hardware Installation

Installation for simple screen sharing from your computer or phone:



1. Plug the HDMI side of the GWAVRD to an HDMI input port on your TV.
2. Plug the USB-A male to a USB port on your TV. Some TV only use the USB port for firmware upgrade only, in this case you will need a separate wall power adapter (not included in the kit).
3. Your display screen will now show IOGEARCast splash screen:

IOGEARCast[™]

SSID: GWAVRD-BFF32E89

Password: 66778899



Connection Speeds May Vary



Download Manual
www.iogear.com/product/GWAVRD

IP: 192.168.203.1



Compatible Devices

macOS[®] 10.14+ Windows[®] 10+
iPadOS[®] Android[™]
iOS[™]



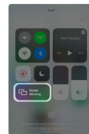
Step 1

Connect to SSID (at top of screen) from Wi-Fi settings and enter the password.



Step 2

Enter IP address at the bottom left of this screen in your web browser. Next connect to your Wi-Fi network.



Step 3

Share your screen wirelessly through AirPlay. Screen Mirroring, connect to a wireless display and more. See Quick Start Guide for more information.

IOGEAR


www.iogear.com

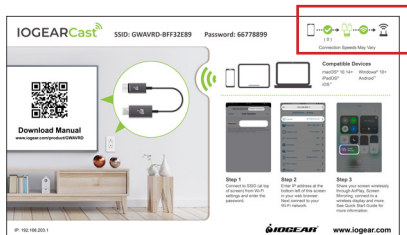
Operation

- a. SSID – When you search for WiFi network on your computer/phone, you will see a number of devices in your area, click on the one with SSID starting with GWAVRD-XXXXXXX.
- b. Password – When you are connected to that SSID you will be asked for a password. Input the password from the screen similar to what is shown in the splash screen
- c. Once the password is inputted, notice the connection diagram to the right of the password field. There are 2 X's, the first one indicate connection from your device to the GWAVRD. If your password is correct the X will turn into a check mark indicating that your device is now connected to the GWAVRD. If all you want to do at this point is to mirror your desktop to your TV, you can stop at this point and share your pictures, presentation or spreadsheet. Depending on your device, please consult the manual of your device for instructions for screen sharing.

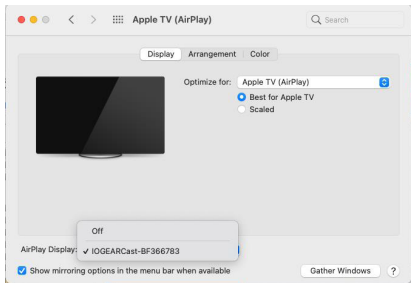


Installation for screen sharing from your computer or phone with Internet access:

1. If you decide to connect the GWAVRD to your router so you can connect to it from anywhere within your network and giving it the ability for you to be able to share your desktop and connect to the Internet at the same time, please follow the below steps:
 - a) Open up your browser and type 192.168.203.1 in the url.
 - b) From the Internet list (please refer to image on page 19), chose your router name and input the password of your router when asked.
 - c) Once the GWAVRD is connected there will be a checkmark next the the selected router.
 - d) On the Splash Screen (see page 15) the X on the right will show a  with the SSID of your router indicating that the GWAVRD is now connected to your router.



- e) At this point you can either reboot the GWAVRD (disconnect and reconnect the power) or go to the WiFi settings on your device and revert back to your home router. If you decide to reboot the GWAVRD, it will automatically reconnect to your router once it is powered back on and your computer or phone should automatically switch back to your home router.



- f) To share your screen, simply go to the screen sharing app on your device and select GWAVRD-xxxxxxx device (See Mac AirPlay above)
2. Please note that you have a choice to include your device to your local network or not. Each choice has its own advantages and disadvantages:


- a) The advantage of adding your device to your local network is that you will be able to send your content from your phone or PC from anywhere within your local (home or office) network if both your PC and the GWAVRD are in the same network.
- b) The disadvantage of not connecting to your network is that you will be able to mirror or extend your phone/PC to a bigger screen, but you will not be able to go online with your PC and you will need to use your phone data to access the Internet.

Your device settings once it is connected to your home router:


1. Once you're connected to your local network your IP Address will be changed from 192.168.203.1 to whatever your network has assigned for the device IP Address (for example this format could be 192.168.1.x or 10.0.1.x depending on your particular router DHCP setup). You will be able to find this from your router information, please refer to your specific router make and model for this information.
2. Once you have the GWAVRD IP Address, type that into your browser and you will be directed to the **Settings** page where you will be able to rename the SSID, change resolution, password, etc. (Please refer to Settings screenshot below).

Setting

Internet	Skyhigh
Device Name	GWAVRD
WiFi Password	12345678
Display	video
Resolution	1920x1080_60P
Wallpaper	ON
display mode	100%
Portrait Mode	0°
Language	Auto
LOGEARAir mode	Auto
Upgrade	No new version!
Reset to default	
Reboot	

- 
3. Here you will also see if there is a new firmware available or not *. If it is, you will be able to select it and the firmware will be automatically upgraded OTA (over the air). Make sure you do NOT disconnect power while the device is upgrading the firmware or the device may be damaged.

*Please note that the GWAVRD will need to be connected to your router for the GWAVRD to know if there are any available firmware.




If you are not able to find the IP Address of the GWAVRD, reconnect to the GWAVRD SSID again and type 192.168.203.1 in your browser url and you will be connected to the settings page where you can make changes to your settings. These settings are (also see page 19):

Internet: This is where you can select your router to connect to the GWAVRD.

Device Name: This will allow you to change the SSID of the GWAVRD for your preference.

WIFI Password: Password to connect to the GWAVRD SSID can be changed here.

Display: Video or Game mode can be selected here. The difference is that in video mode there may be some overhead processing that allows for, for example, motion smoothing or noise reduction. These processing power can cause input lag if you're playing a game, these are then turned off to give you less input lag for better gaming experience.




Resolution: Output resolutions can be selected for 480p, 720p and 1080p at 60 fps frames per second)

Wallpaper: After the splash screen is shown for about 2 minutes the screen will change to a wallpaper showing different pictures from known artists. This can be turned on or off to show only the splash screen if so desired. If you leave it on, it is a good indication that you are connected to the Internet when the wallpaper starts showing. The SSID and password will still be displayed at the top right corner of your screen.

Display Mode: This allows you to watch the screen at different magnifications or scaled to fit your display screen.

Portrait: This option will rotate your view + or - 90°.

Language: 28 different languages can be selected or you can choose Auto select.



IOGEAR Air Mode: This allows you to mirror, mirror and streaming or Auto select, Default is Auto Select. This option requires GWAVRD to reboot to take effect.

Upgrade: A message will pop up if a new firmware is available. A new firmware will be available if there are any driver changes needed for any particular system such as Windows or Android, etc. If there are, clicking on the message will allow the firmware to be installed OTA (Over the Air) and no user intervention is needed. As mentioned previously, make sure you do NOT disconnect power while the device is upgrading the firmware or the device may be damaged.

Reset to Default: Clicking on this will change all your settings to factory settings. All settings will need to be reconfigured if you want the settings to be specific to your preference.

Reboot: Clicking on this will simply power off and power back on your GWAVRD.

Trouble Shooting

1. I'm not able to see the SSID of the GWAVRD on the IOGEAR screen.
 - a. Reset the unit and see if the SSID appears now.
2. I plug the power cable into the TV USB port and I don't see the IOGEAR screen.
 - a. The USB port on your TV may only be a service port, try plug the power cable to a USB power adapter (not included in the kit).
 - b. Power adapter requirement is 5V/500mA or 5V/1A
3. Why am I not getting 1080p resolution?
 - a. It is possible that your source is not 1080p such as some video on YouTube. You can check this by clicking on the Settings icon > Quality under the video in YouTube to see what the streaming resolution is. Please note that if you check your TV info, the stream will indicate 1080p, this is because the TV detects a 1080p frame that the GWAVRD is streaming, although the

- a. actual resolution from the YouTube video is only 720p or 480p.
4. My phone is playing Netflix but I only get sound from my TV.
 - a. This is maybe due to DRM issue and your online apps. You will need to share your screen from your PC on your browser that is connected to your movie from Netflix, Hulu, Amazon Prime, etc. instead.
5. How do I reset my GWAVRD, I'm having trouble with wireless connection, video issue or audio issue?
 - a. Make sure this is not a DRM issue with some online video apps.
 - b. Make sure your other devices can access the Internet to confirm that this is not a router or wireless issue. If your other devices have the same issue then you can rule out the GWAVRD. Wait till your other devices are able to go online, then you can recheck the GWAVRD for connectivity by doing a reset.

- c. To reset the GWAVRD, press and hold the reset button with a pin or small paper clip for 12 seconds (you will feel a click if you depress the reset button correctly). On the screen you will see a message “Reset to default”, release the button.
- d. The GWAVRD will reboot and a splash screen will appear again with factory default SSID and password. At this time you will need to go through Hardware Installation steps again to connect to the GWAVRD.

Compliance Information

FCC Statement

This equipment has been tested and found to comply with the limits for a Class B digital device, pursuant to Part 15 of the FCC Rules. These limits are designed to provide reasonable protection against harmful interference in a residential setting. This product generates, uses, and can radiate radio frequency energy and, if not installed and used as directed, it may cause harmful interference to radio communications. Although this product complies with the limits for a Class B digital device, there is no guarantee that interference will not occur in a particular installation.

CE Compliance

This device has been tested and found to comply with the following European Union directives: Electromagnetic Capability (2004/108/EC), Low Voltage (2006/95/EC) and R&TTED (1999/5/EC).

Limited Warranty

WE'RE HERE TO HELP YOU! NEED ASSISTANCE SETTING UP THIS PRODUCT?

Make sure you:

- Visit www.iogear.com for more product information
- Visit www.iogear.com/support for live help and product support

Warranty Information

This product carries a 1 Year Limited Warranty. For the terms and conditions of this warranty, please go to

<https://www.iogear.com/support/warranty>

Register online at <https://www.iogear.com/register>

Important Product Information

Product Model _____

Serial Number _____

Contact

IOGEAR

<https://iogear.custhelp.com>

support@iogear.com

www.iogear.com

