

**050SE/050LE Heavy Duty Stapler**

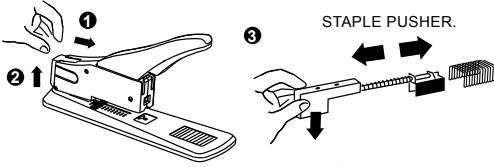
**050LX Effortless Heavy Duty Stapler (Reduces efforts 40%)**

**INSTRUCTIONS FOR USE**

**1. Loading staples**

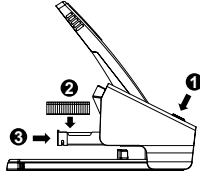
**050SE/050LE**

- ① Push and lift the staple pusher up slightly.
- ② Remove the staple pusher and insert staples.
- ③ Put back the staple pusher.



**050LX**

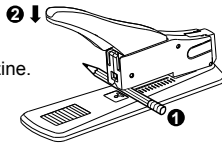
- ① Press knob
- ② Load staples
- ③ Push back



**2. Remove the jammed staples**

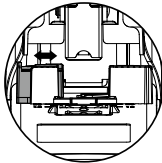
**050SE/050LE**

- ① Place a pencil under the magazine.
- ② Press the handle to eject the jammed staple.



**050LX**

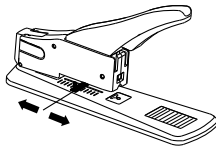
- ① Push in the stopper and press down the handle to clean the jammed staples.
- ② Push out the stopper to original position.



**3. Paper Gauge**

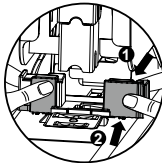
**050SE/050LE**

Adjust the paper gauge to select position.



**050LX**

- ① Squeeze lock to release paper gauge.
- ② While squeezing, using both hands to adjust the paper gauge to the suitable position.



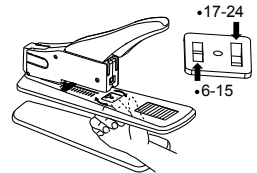
**STAPLE SIZES AVAILABLE**

Staple	Leg Length	80gsm Paper Sheets	Stapler
23/6	6mm (1/4")	20	050SE 050LE 050LX
23/8	8mm (5/16")	40	050SE 050LE 050LX
23/10	10mm (3/8")	60	050SE 050LE 050LX
23/13	13mm (1/2")	90	050SE 050LE 050LX
23/15	15mm (9/16")	110	050LE 050LX
23/17	17mm (5/8")	130	050LE 050LX
23/20	20mm (13/16")	160	050LE 050LX
23/23	23mm (7/8")	190	050LE 050LX
23/24	24mm (15/16")	200	050LE 050LX

**4. Anvil position**

**050LE/050LX**

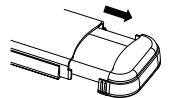
Rotate anvil to fit different sizes of staples .



**5. Storage**

**050LX**

Such as staples, clips...etc.



**CAUTION**

- Keep fingers away from the anvil area when you use the stapler to avoid injury.
- Do not staple without paper in order to avoid jamming.

